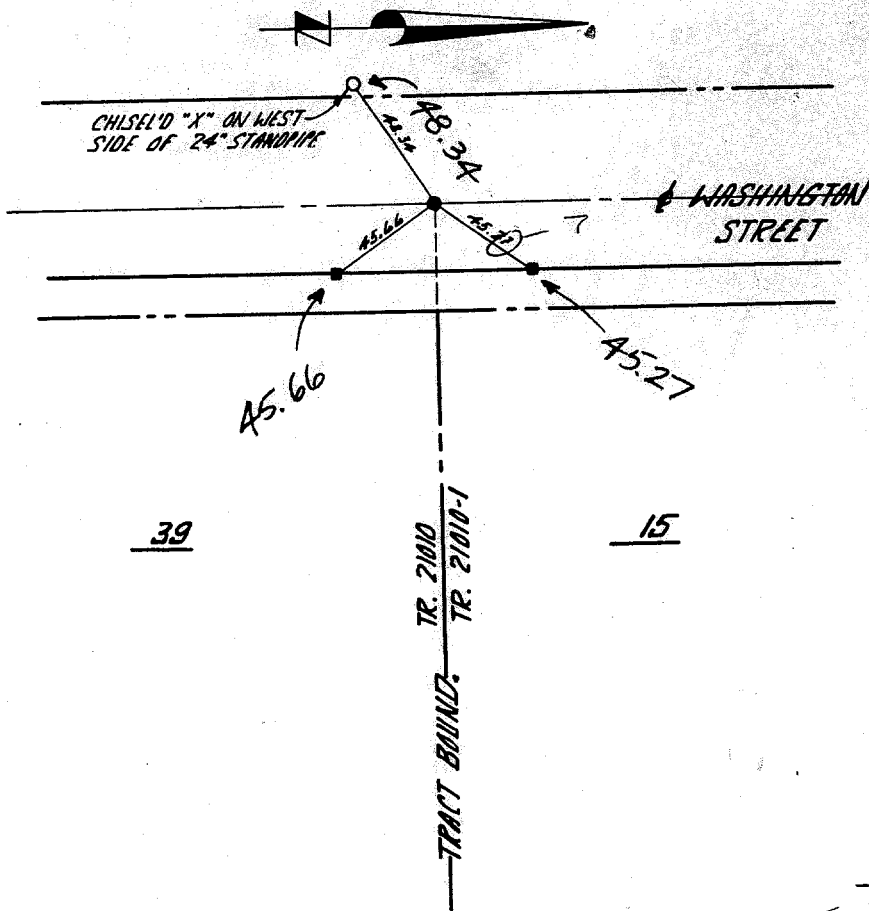


IK. 21010-1

**GABEL, COOK & BECKLUND**  
 Environmental • Hydrology • Planning  
 Civil Engineering • Surveying • Structures  
 647 North Main Street, Suite 1-B, Riverside, Calif. 92501  
 Telephone 714 788-8092

SHT #12

TIES



- INDICATES SET 1" I.P.-FLUSH-RCE 21740
- INDICATES SET LEAD / TACK

WASHINGTON ST  
CTR. 21010-1

Street: WASHINGTON ST.  
OFFICIAL USE ONLY  
X-Street: TRACT BNDY.

- × FD. Ramset Nail on T/C
- FD. "C" Nail on T/C

- FD. LD. & TK. on T/C
- Set LD. & TK. on T/C

**OFFICIAL TIE PLAT**  
CITY OF RIVERSIDE

*These ties are for the purpose of perpetuating the found monumentation. No claim is made as to the relationship of the points or lines shown hereon to true boundary locations.*

Scale: \_\_\_\_\_  
 Date: \_\_\_\_\_  
 Drawn by: \_\_\_\_\_  
 W.O.: \_\_\_\_\_  
 F.B.: \_\_\_\_\_

Sheet 1 of 1  
File No.: