

SWING TIES

WASHINGTON

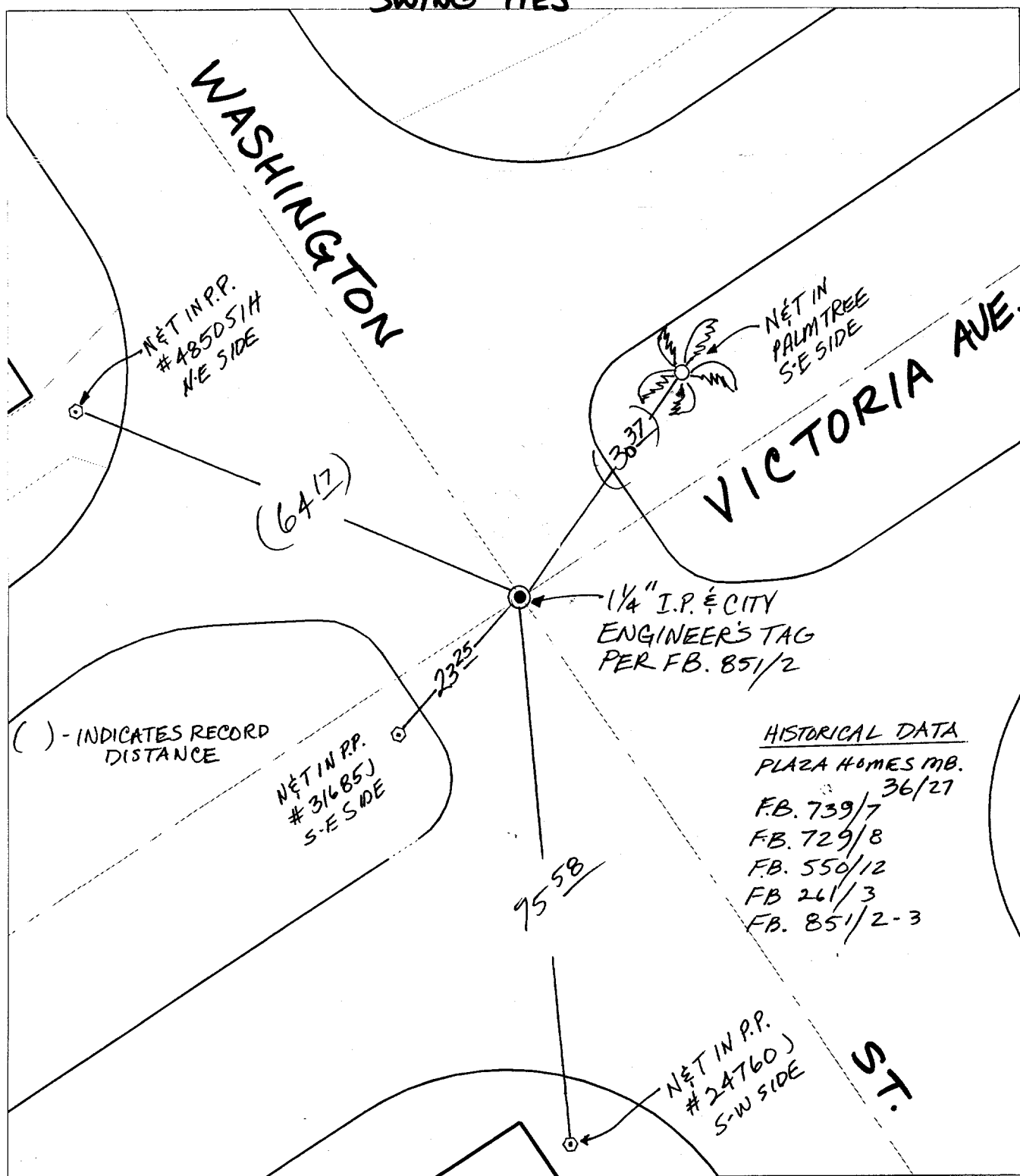
VICTORIA AVE.

Street:

WASHINGTON ST.
8972 715

X-Street:
OFFICIAL USE ONLY

VICTORIA AVE.



- × FD. Ramset Nail on T/C
- FD. LD. & TK. on T/C
- FD. "C" Nail on T/C
- Set LD. & TK. on T/C

P.K. and City Engineer tag to be set @ surface after street construction is complete. (If possible)

Scale: 1" = 20'

Date: 12/16/96

Drawn by: SURVEY

W.O.:

F.B.:

OFFICIAL TIE PLAT

CITY OF RIVERSIDE

These ties are for the purpose of perpetuating the found monumentation. No claim is made as to the relationship of the points or lines shown hereon to true boundary locations.



Sheet 1 of 1

File No.: