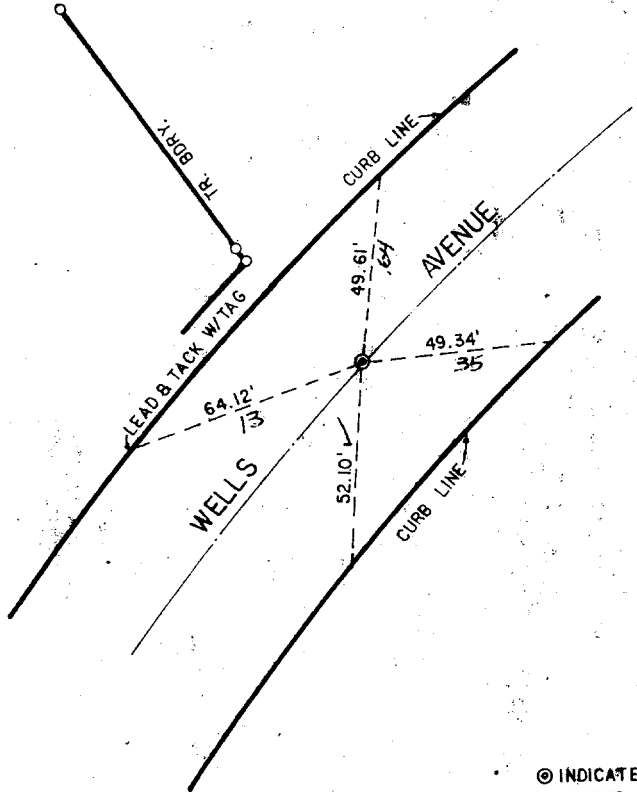


Street: **WELLS AVE**
8924 TIF

X-Street: **E.C.**
OFFICIAL USE ONLY



NOTE:
ALL TIES TO LEAD & TACK
IN CURB UNLESS SHOWN
OTHERWISE

⊙ INDICATES 1" I.P. SET. FLUSH
TAGGED L.S. 3712

CENTERLINE TIES

TRACT 5810 MB 89/24,25

MAXWELL, BROWN & MULLINS
PLANNING · ENGINEERING · SURVEYING
1771 No. D St., San Bernardino, California 92406

SCALE: 1" = 40'
DATE: 9-20-77

JOB NO. 76-8-2
DWG. NO. 254

- ⊗ FD. Ramset Nail on T/C
- FD. "C" Nail on T/C

- FD. LD. & TK. on T/C
- Set LD. & TK. on T/C

Scale:
Date:
Drawn by:
W.O.:
F.B.:

OFFICIAL TIE PLAT

CITY OF RIVERSIDE

*These ties are for the purpose of perpetuating the found
monumentation. No claim is made as to the relationship of
the points or lines shown hereon to true boundary locations.*

Sheet 1 of 1
File No.: