

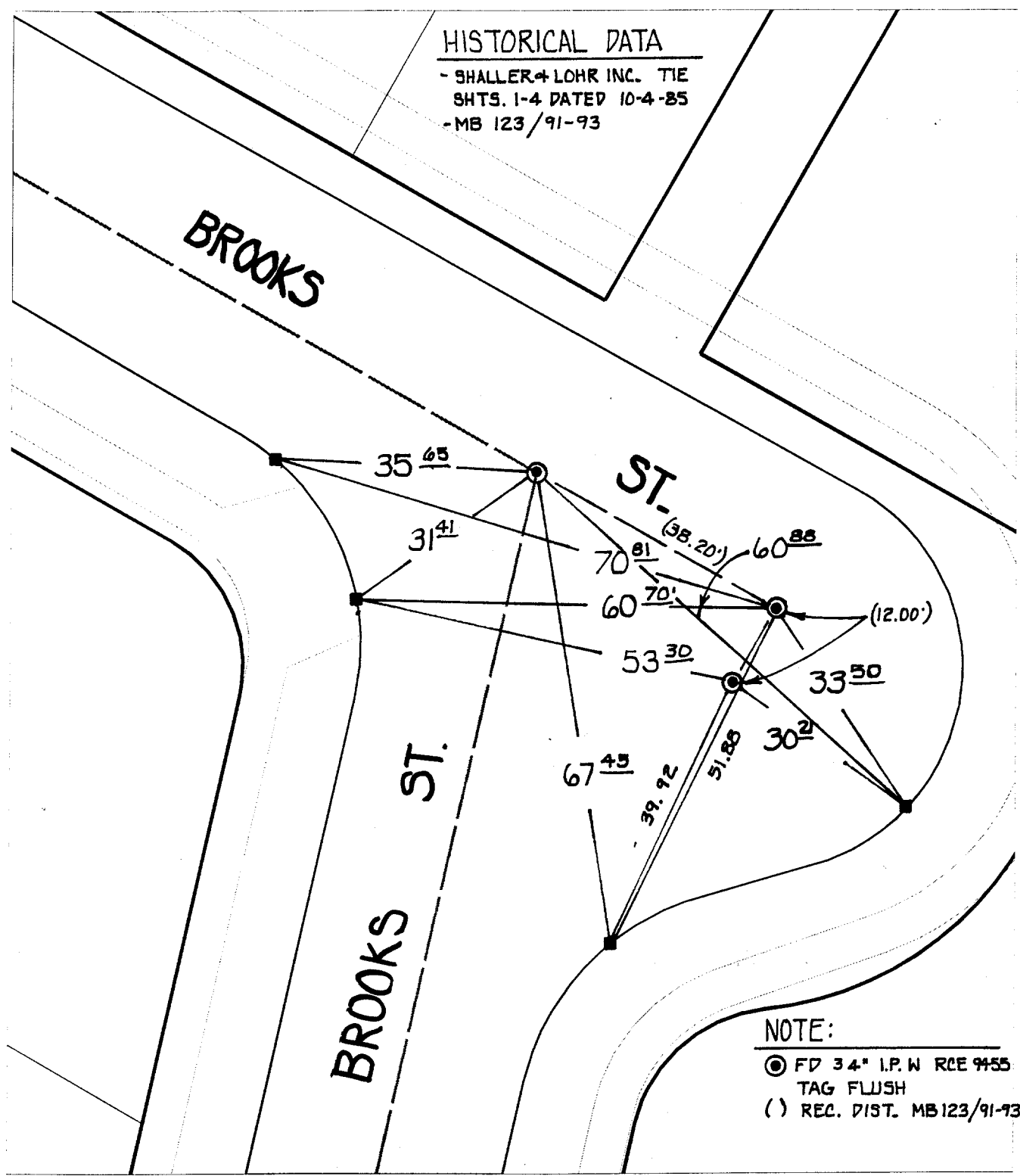
SWING TIES

898 T: F

Street: BROOKS
X-Straddle NUCKLE ELY OF OLIVEWOOD
OFFICIAL USE ONLY

HISTORICAL DATA

- SHALLER & LOHR INC. TIE
- SHTS. 1-4 DATED 10-4-85
- MB 123/91-93



NOTE:

- ⊙ FD 3/4" I.P.W RCE 9455
TAG FLUSH
- () REC. DIST. MB 123/91-93

- × FD. Ramset Nail on T/C
- FD. "C" Nail on T/C

- FD. LD. & TK. on T/C
- Set LD. & TK. on T/C

Scale: 1" = 20'

Date: 11/29/99

Drawn by: scurtis

W.O.:

F.B.:

OFFICIAL TIE PLAT CITY OF RIVERSIDE

These ties are for the purpose of perpetuating the found monumentation. No claim is made as to the relationship of the points or lines shown hereon to true boundary locations.



Sheet 1 of 1

File No.: