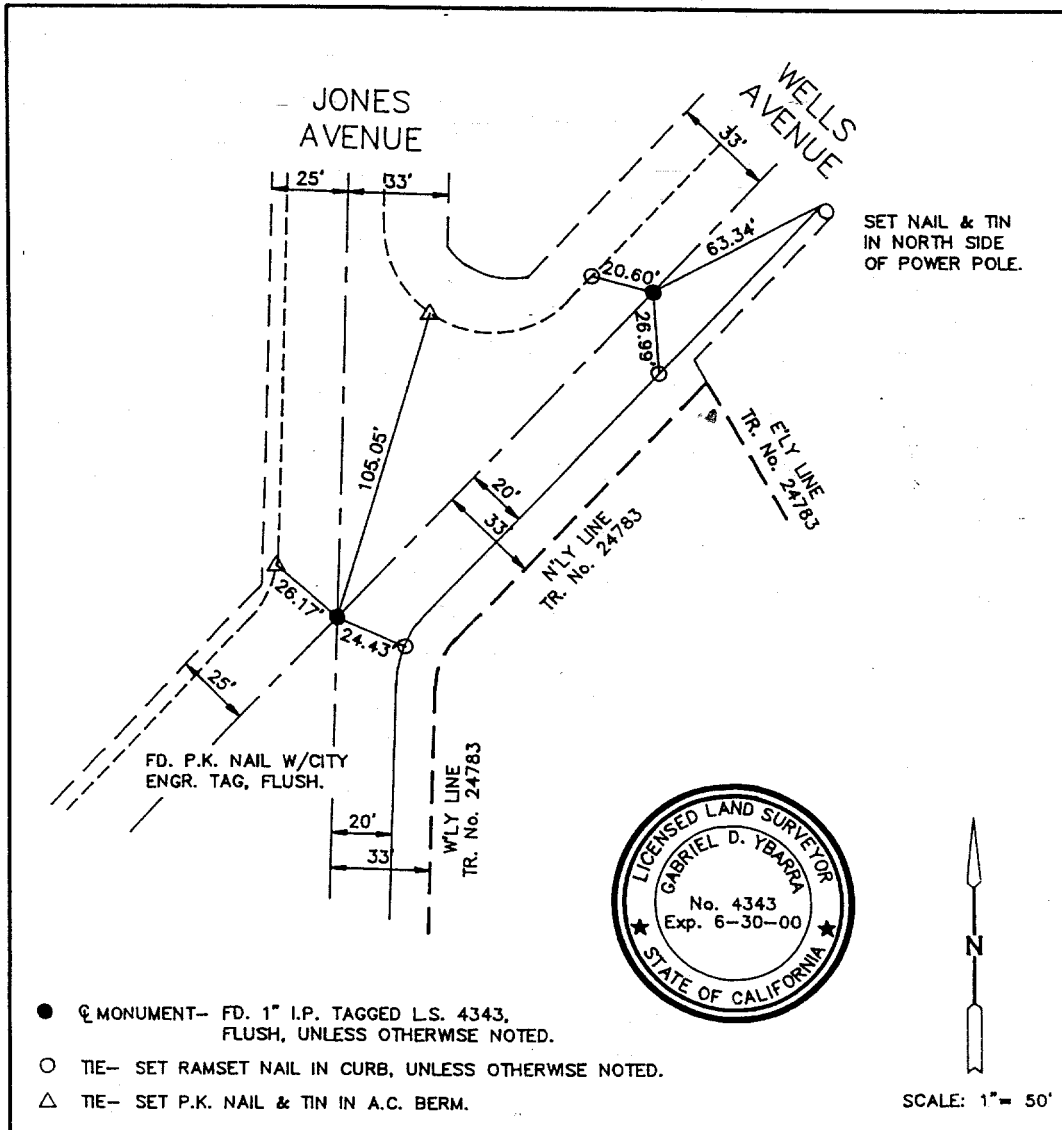


WELLS AVE. @ JONES AVE. (17)



- MONUMENT- FD. 1" I.P. TAGGED L.S. 4343, FLUSH, UNLESS OTHERWISE NOTED.
- TIE- SET RAMSET NAIL IN CURB, UNLESS OTHERWISE NOTED.
- △ TIE- SET P.K. NAIL & TIN IN A.C. BERM.



SCALE: 1" = 50'

ACTION SURVEYS 4683 JONES AVENUE RIVERSIDE, CA 92505 (909) 689-8446 (909) 689-6816 FAX		TRACT No. 24783 CITY OF RIVERSIDE	
<i>Gabriel D. Ybarra</i> 8-20-98 GABRIEL D. YBARRA L.S. 4343 DATE		CENTERLINE TIES JONES AVENUE AND WELLS AVENUE	
DATE: JULY 1998	SCALE: 1" = 50'	SHEET 1 OF 2 SHEETS	

Street: **WELLS AVE.**
 X-Street: **JONES AVE.**
 OFFICIAL USE ONLY

- ✕ FD. Ramset Nail on T/C
- FD. "C" Nail on T/C
- FD. LD. & TK. on T/C
- Set LD. & TK. on T/C

Scale:	OFFICIAL TIE PLAT CITY OF RIVERSIDE <i>These ties are for the purpose of perpetuating the found monumentation. No claim is made as to the relationship of the points or lines shown hereon to true boundary locations.</i>	Sheet 1 of 1 File No.:
Date:		
Drawn by:		
W.O.:		
F.B.:		