

Street: **WELLS AVE.**

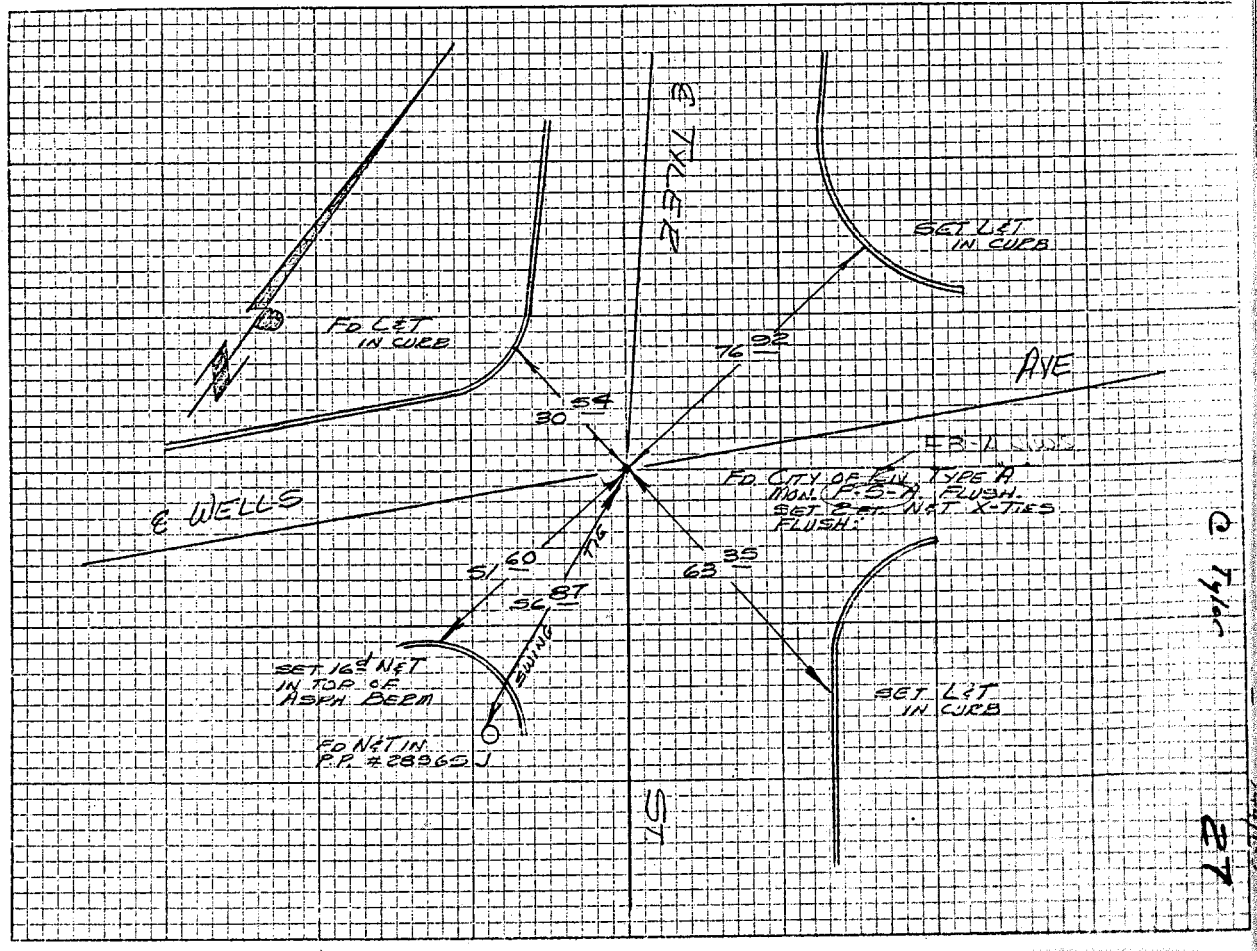
**9003**

X-Street: **TYLER ST.**

**TYLER ST.**

OFFICIAL USE ONLY

<b>TYLER ST AT WELLS AVE</b>	
<b>HISTORICAL DATA</b> F.B. 735/12 F.B. 717/96 F.B. 4-2/13 F.B. 752/13	<b>TRANSIT TIES</b> <div style="border: 1px solid black; padding: 2px; display: inline-block;">AND</div> <b>SWING TIE</b>
	<b>CREW</b> ERIC RUSSELL JUNE 25, 1978 F.B. 397/63



- ✕ FD. Ramset Nail on T/C
- FD. LD. & TK. on T/C
- FD. "C" Nail on T/C
- Set LD. & TK. on T/C

## OFFICIAL TIE PLAT

### CITY OF RIVERSIDE

*These ties are for the purpose of perpetuating the found monumentation. No claim is made as to the relationship of the points or lines shown hereon to true boundary locations.*

Scale: \_\_\_\_\_

Date: \_\_\_\_\_

Drawn by: \_\_\_\_\_

W.O.: \_\_\_\_\_

F.B.: \_\_\_\_\_

Sheet 1 of 1

File No.: \_\_\_\_\_