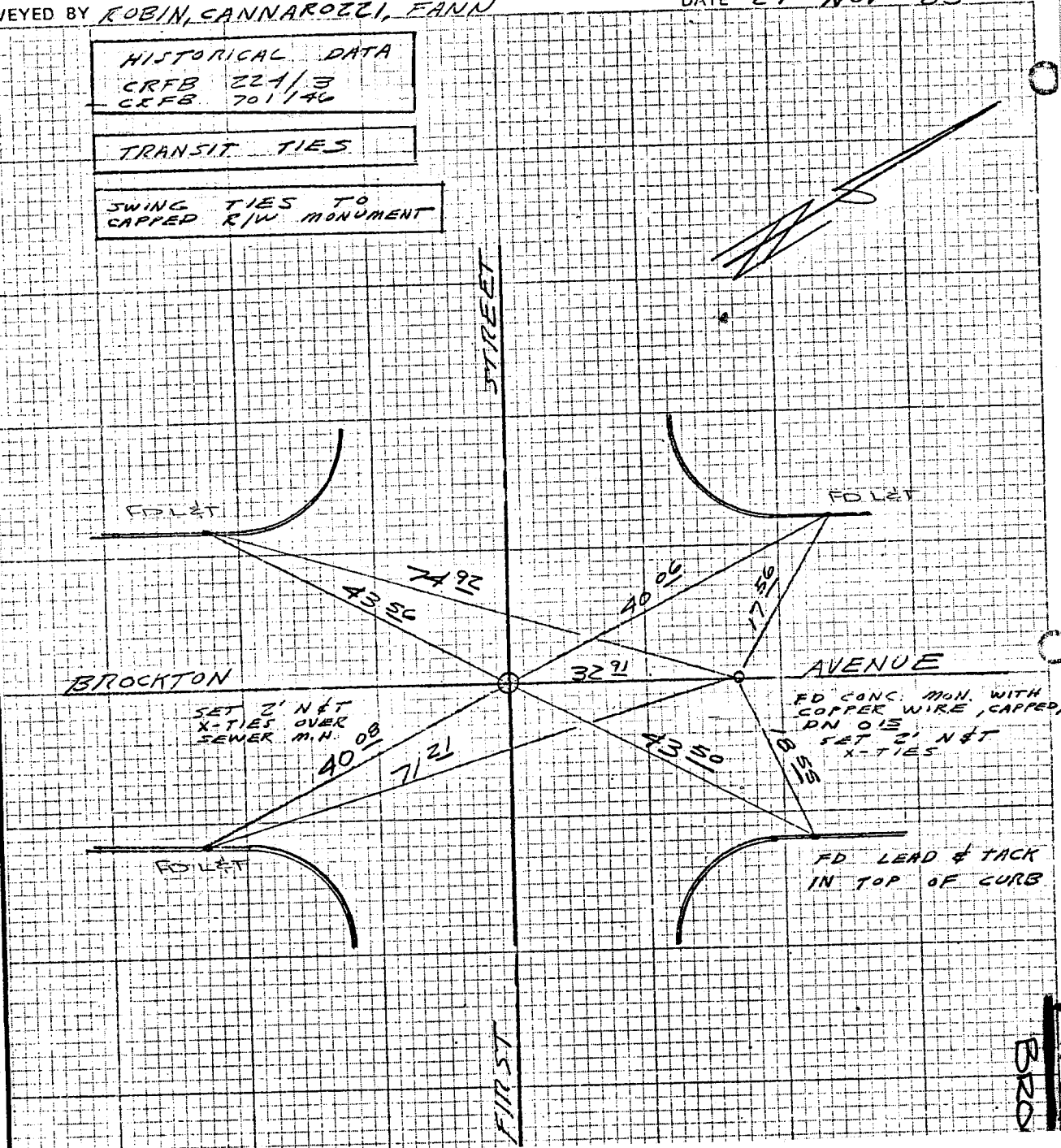


**HISTORICAL DATA**  
 CRFB 221/3  
 CRFB 701/140  
**TRANSIT TIES**  
**SWING TIES TO**  
**CAPPED R/W MONUMENT**

Street: BROCKTON AVE  
9017 TIE  
 X-Street: 1<sup>ST</sup> ST  
 OFFICIAL USE ONLY  
FIRST  
BRO



- ✕ FD. Ramset Nail on T/C
- FD. LD. & TK. on T/C
- FD. "C" Nail on T/C
- Set LD. & TK. on T/C

Scale:  
 Date:  
 Drawn by:  
 W.O.:  
 F.B.:

**OFFICIAL TIE PLAT**  
**CITY OF RIVERSIDE**  
*These ties are for the purpose of perpetuating the found monumentation. No claim is made as to the relationship of the points or lines shown hereon to true boundary locations.*

Sheet 1 of 1  
 File No.: