

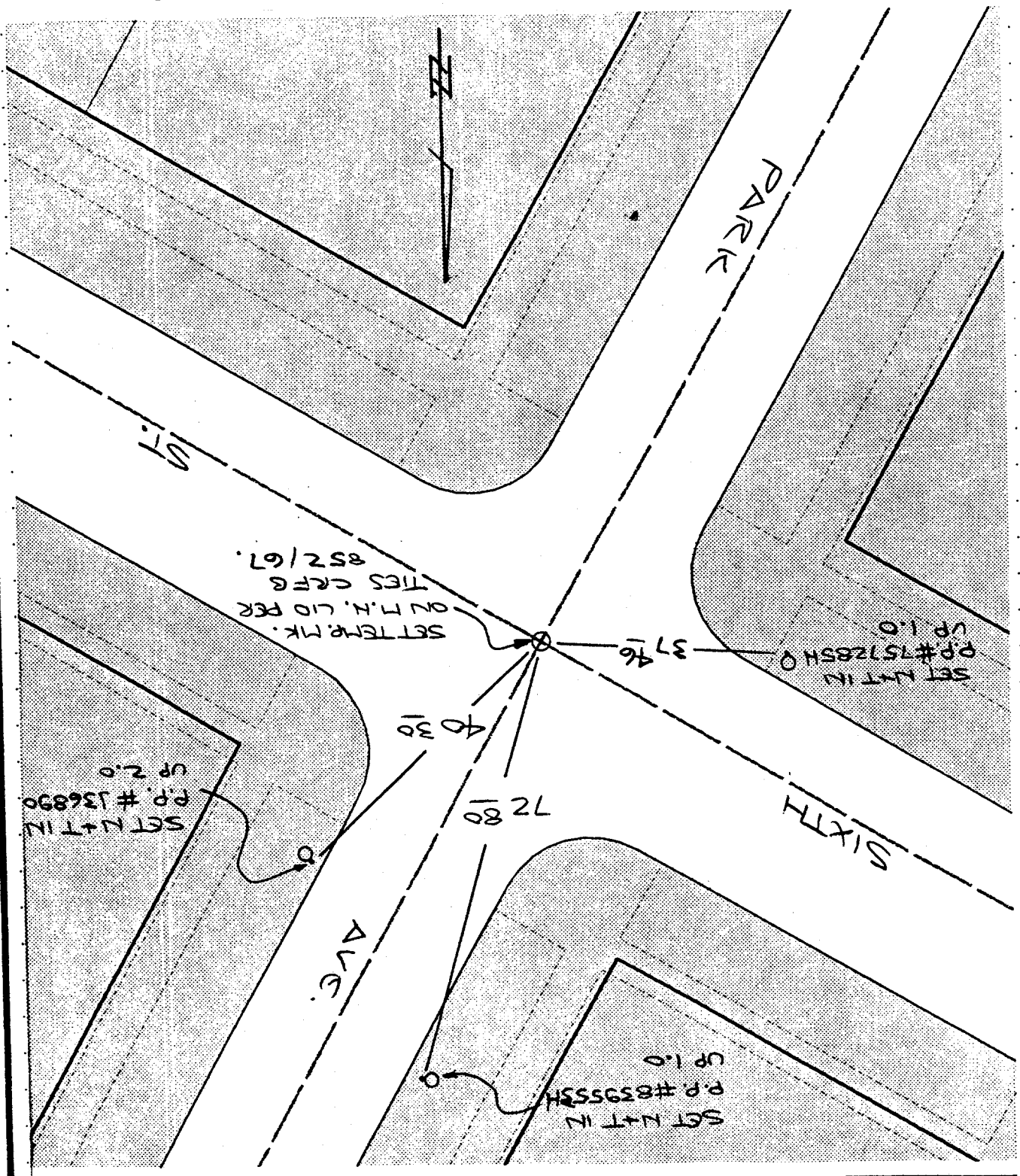
SCALE: _____
 DATE: 10-30-96
 DR. BY: LOPEZ
 W.O.: _____
 F.B.: _____

OFFICIAL TIE PLAT
 CITY OF RIVERSIDE

These ties are for the purpose of perpetuating the found
 monumentation. No claim is made as to the relationship of
 the points or lines shown hereon to true boundary locations.
 FILE NO.: _____
 OF 1 SHEETS
 SHEET 1

STREET PARK AVE.
9153 TIE
 OFFICE USE ONLY
 X-STREET SIXTH ST.

● FD. LD. & TK. on T/C
 ○ SET LD. & TK. on T/C
 X FD. Ramset Nail on T/C
 ■ FD. "C" Nail on T/C



SWING TIES