

LIME STREET
AT 10TH STREET

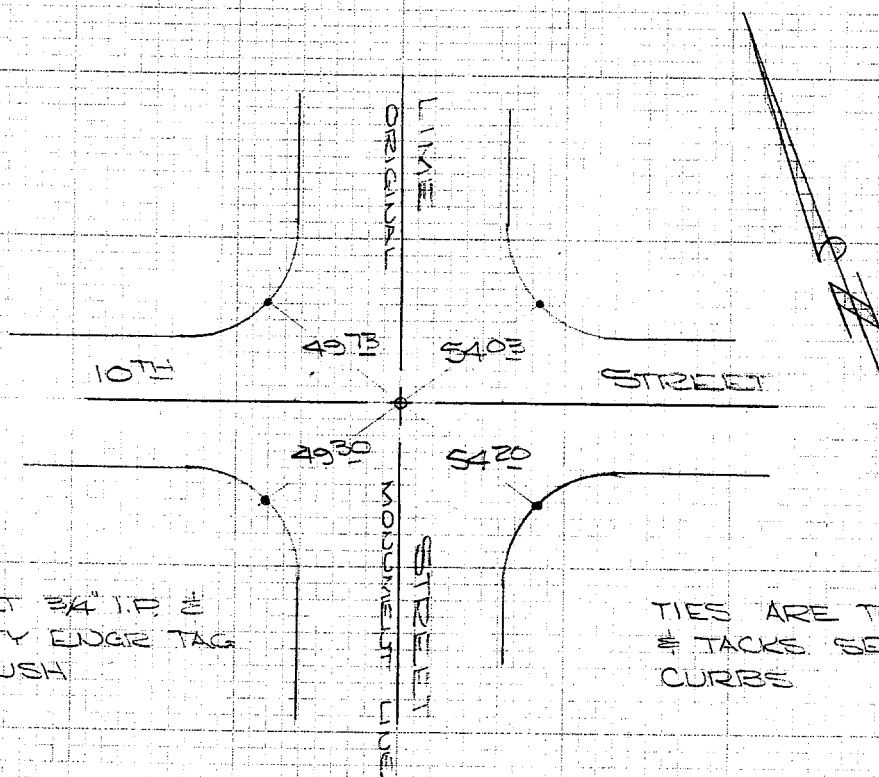
HISTORICAL
DATA
FB. 526/62

TRANSIT TIES

CREW:
STEELE
FRYC
NEW
SEPT. 1, '71
FB. 522/52

Street: LIME ST
9218 TIE

X-Street: 10th St
OFFICIAL USE ONLY



○ SET 3/4" I.P. @
CITY EDGE TAG
FLUSH

TIES ARE TO LEADS
≠ JACKS SET IN
CURBS

× FD. Ramset Nail on T/C
■ FD. "C" Nail on T/C

● FD. LD. & TK. on T/C
○ Set LD. & TK. on T/C

Scale:
Date:
Drawn by:
W.O.:
F.B.:

OFFICIAL TIE PLAT

CITY OF RIVERSIDE

These ties are for the purpose of perpetuating the found monumentation. No claim is made as to the relationship of the points or lines shown hereon to true boundary locations.

Sheet 1 of 1
File No.: