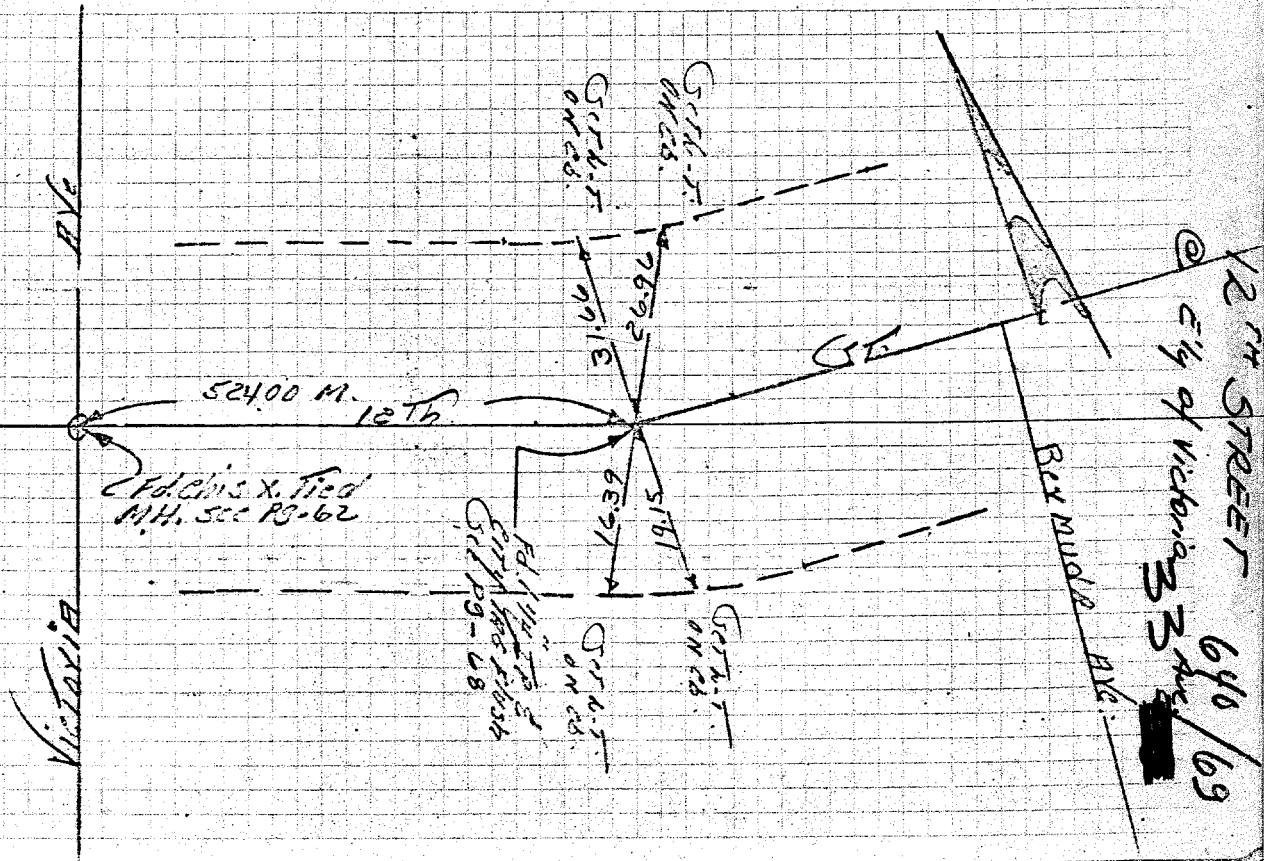


12TH ST. - ELY OF VICTORIA

HISTORICAL DATA
See FB. 204/15
F.B. 484/68
FB. 640/69

FIELD PARTY
BOBMY
GRANDINETTE
ELY
F.B. 640/69
8-15-1968

TRANSIT TIES



OFFICIAL USE ONLY

X-Street: ELY OF VICTORIA AVE

Street: 12th St.
9298 TIF

12TH STREET 640/69
City of Victoria 33

- × FD. Ramset Nail on T/C
- FD. "C" Nail on T/C

- FD. LD. & TK. on T/C
- Set LD. & TK. on T/C

Scale:
Date:
Drawn by:
W.O.:
F.B.:

OFFICIAL TIE PLAT
CITY OF RIVERSIDE

These ties are for the purpose of perpetuating the found monumentation. No claim is made as to the relationship of the points or lines shown hereon to true boundary locations.

Sheet 1 of 1
File No.:

33