

Street: 13th St.
9319 TIP

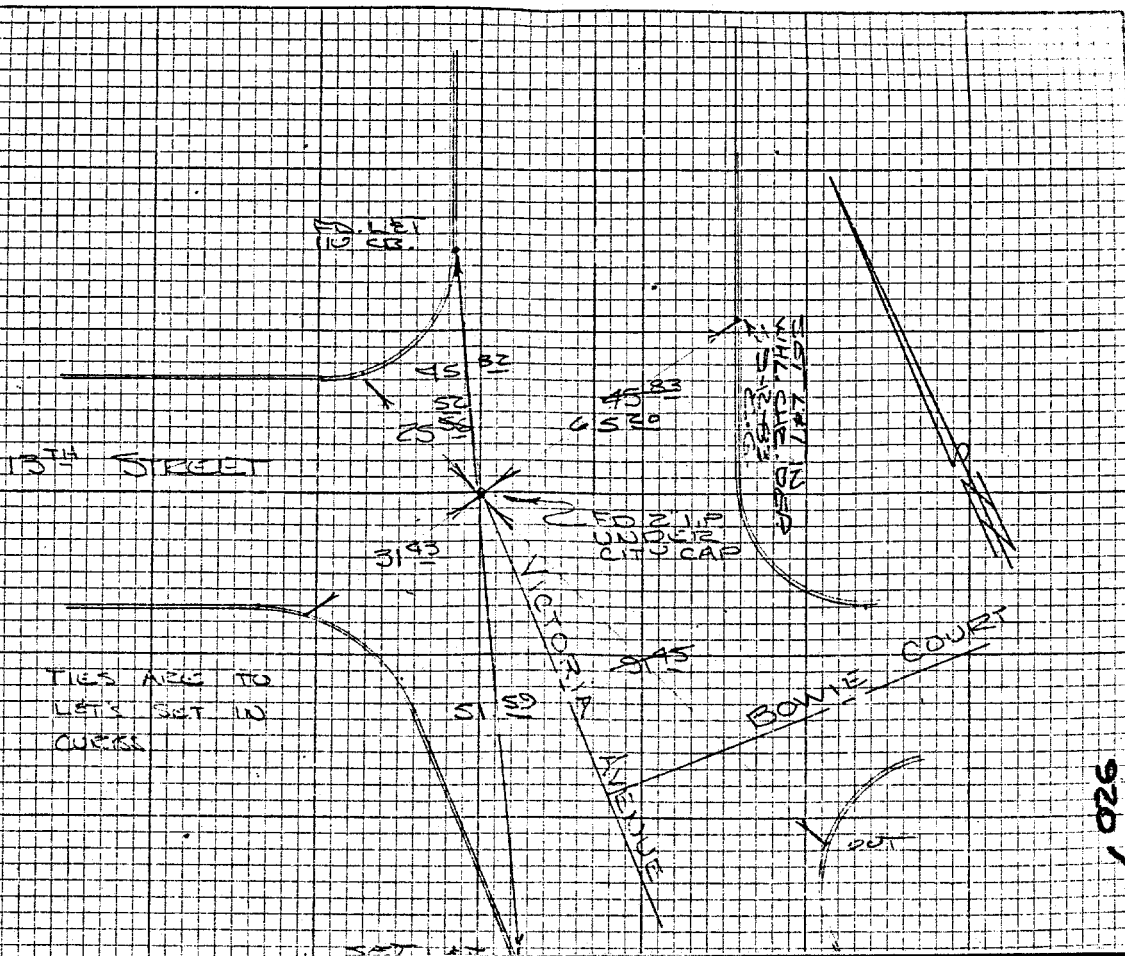
OFFICIAL USE ONLY
X-Street: Victoria Ave

VICTORIA AVENUE
AT 13TH STREET

HISTORICAL
DATA

TRANSIT TIES

CREW
STEELT
THOEP
REYC
5-27-65
FB 920/14



× FD. Ramset Nail on T/C
■ FD. "C" Nail on T/C

● FD. LD. & TK. on T/C
○ Set LD. & TK. on T/C

Scale:
Date:
Drawn by:
W.O.:
F.B.:

OFFICIAL TIE PLAT

CITY OF RIVERSIDE

These ties are for the purpose of perpetuating the found monumentation. No claim is made as to the relationship of the points or lines shown hereon to true boundary locations.

Sheet 1 of 1
File No.:

17