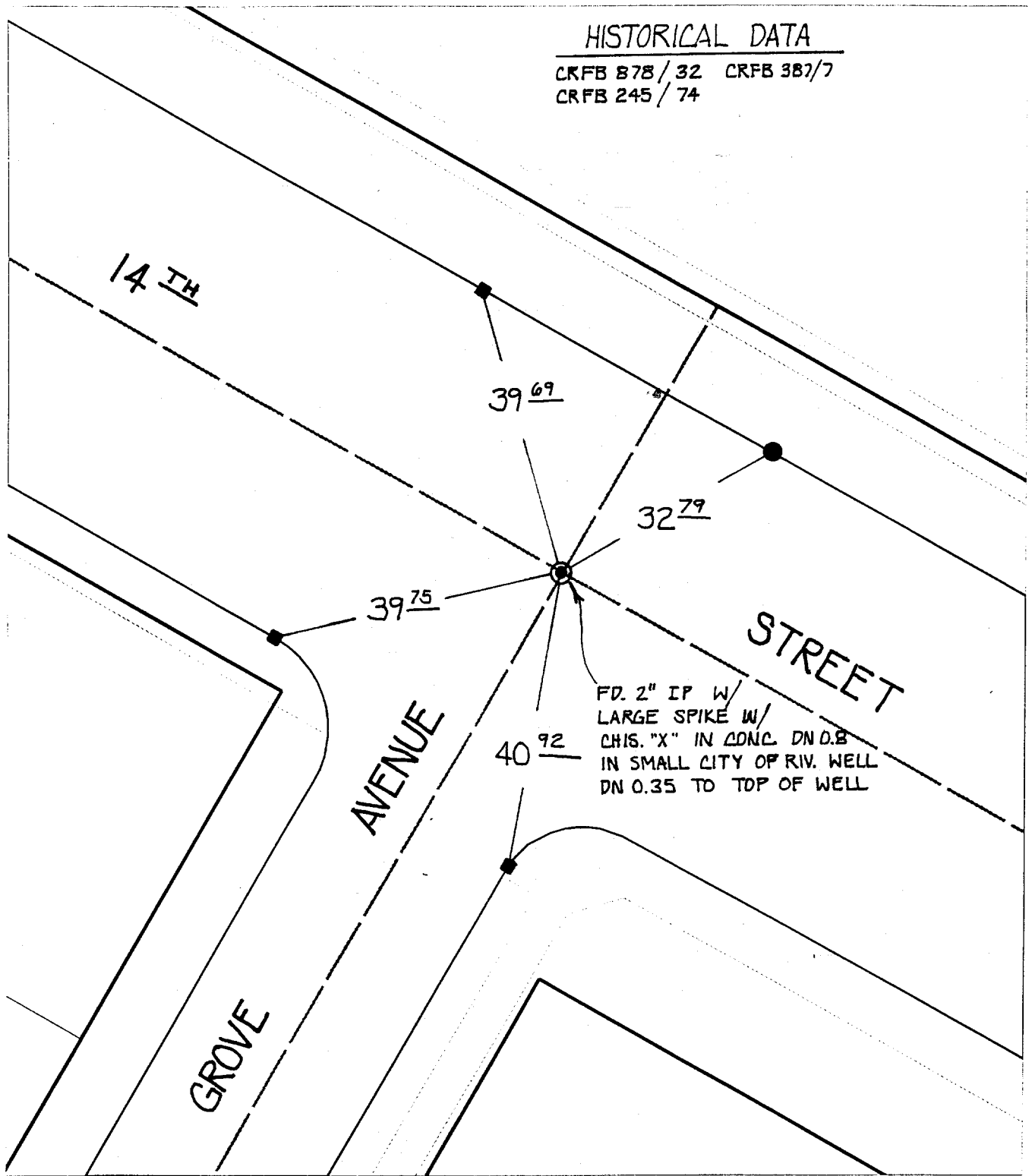


# SWING TIES

## HISTORICAL DATA

CRFB 878 / 32 CRFB 387 / 7  
 CRFB 245 / 74



- 

Street: 9329 TIE 14TH ST  
 X-Street: OFFICIAL USE ONLY GROVE AVE  
 11

Scale: 1" = 20'  
 Date: 12/17/99  
 Drawn by: scurtis  
 W.O.:  
 F.B.:

**OFFICIAL TIE PLAT**  
 CITY OF RIVERSIDE

*These ties are for the purpose of perpetuating the found monumentation. No claim is made as to the relationship of the points or lines shown hereon to true boundary locations.*

Sheet 1 of 1  
 File No.: