

Street: Fourteenth St  
9335 TIE

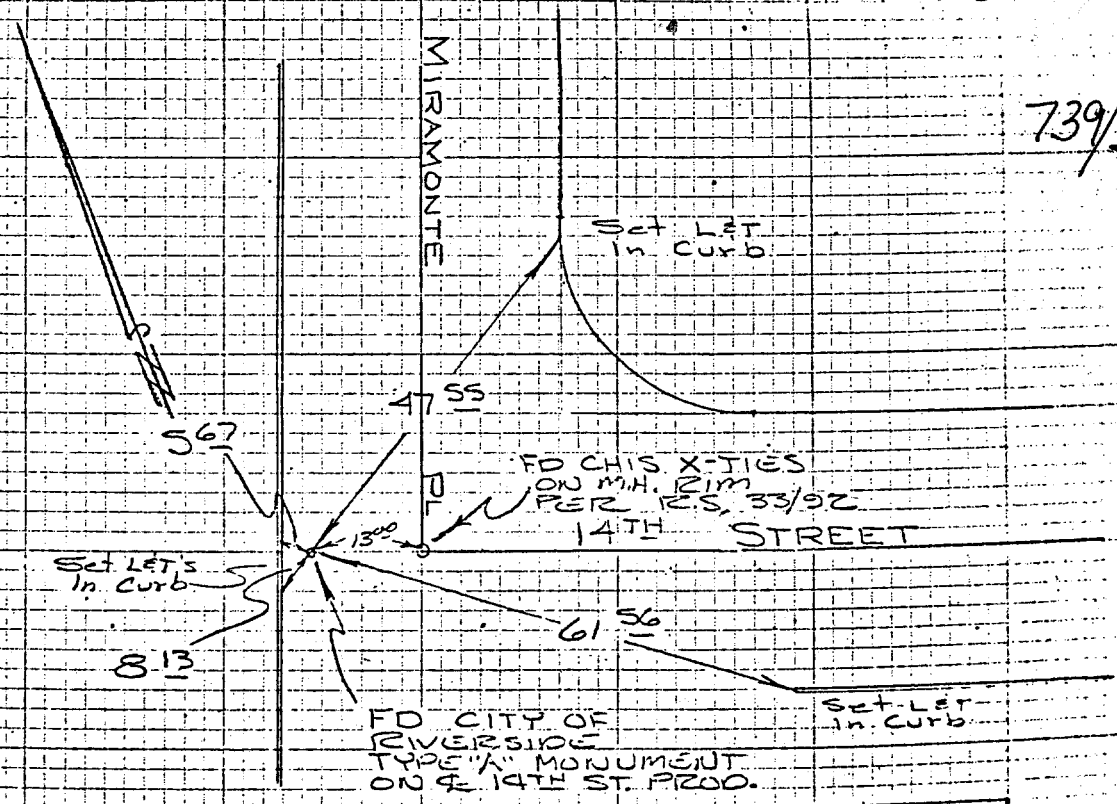
X-Street: Miramonte Pl.  
 OFFICIAL USE ONLY

9335 TIE

MIRAMONTE DRIVE AT 14TH STREET  
 TIES TO COORDINATE POINT

✓ 3-72 Steele

739/34



@ Miramonte

HISTORICAL DATA  
 F.P. 615/60  
 F.P. 735/49  
 R.S. 33/92

CREW STEELE BECK  
 1-17-67  
 FB 739/34

- ✕ FD. Ramset Nail on T/C
- FD. LD. & TK. on T/C
- FD. "C" Nail on T/C
- Set LD. & TK. on T/C

Scale:  
 Date:  
 Drawn by:  
 W.O.:  
 F.B.:

## OFFICIAL TIE PLAT

### CITY OF RIVERSIDE

*These ties are for the purpose of perpetuating the found monumentation. No claim is made as to the relationship of the points or lines shown hereon to true boundary locations.*

Sheet 1 of 1  
 File No.:

19