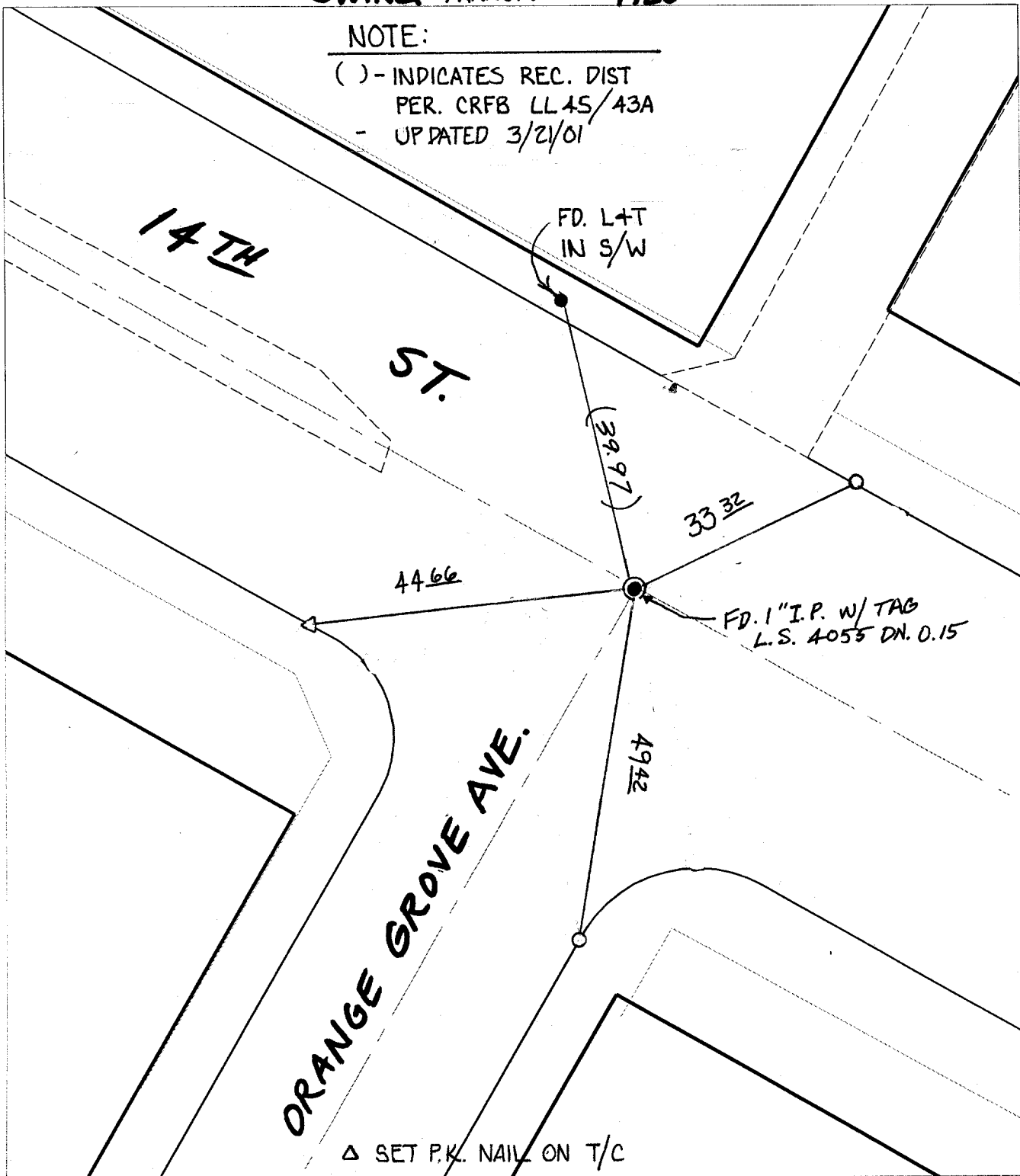


SWING TRANSIT TIES

NOTE:

() - INDICATES REC. DIST
 PER. CRFB LL 45/43A
 - UPDATED 3/21/01



△ SET P.K. NAIL ON T/C

- × FD. Ramset Nail on T/C
 - FD. LD. & TK. on T/C
 - FD. "C" Nail on T/C
 - Set LD. & TK. on T/C
- P.K. and City Engineer tag to be set @ surface after street construction is complete. (If possible)*

Street: **9338** 14TH ST.
 X-Street: **ORANGE GROVE AVE.**
 OFFICIAL USE ONLY

Scale: 1" = 20'
 Date: 09/17/98
 Drawn by: SURVEY
 W.O.:
 F.B.:

OFFICIAL TIE PLAT
 CITY OF RIVERSIDE

These ties are for the purpose of perpetuating the found monumentation. No claim is made as to the relationship of the points or lines shown hereon to true boundary locations.



Sheet 1 of 1
 File No.: