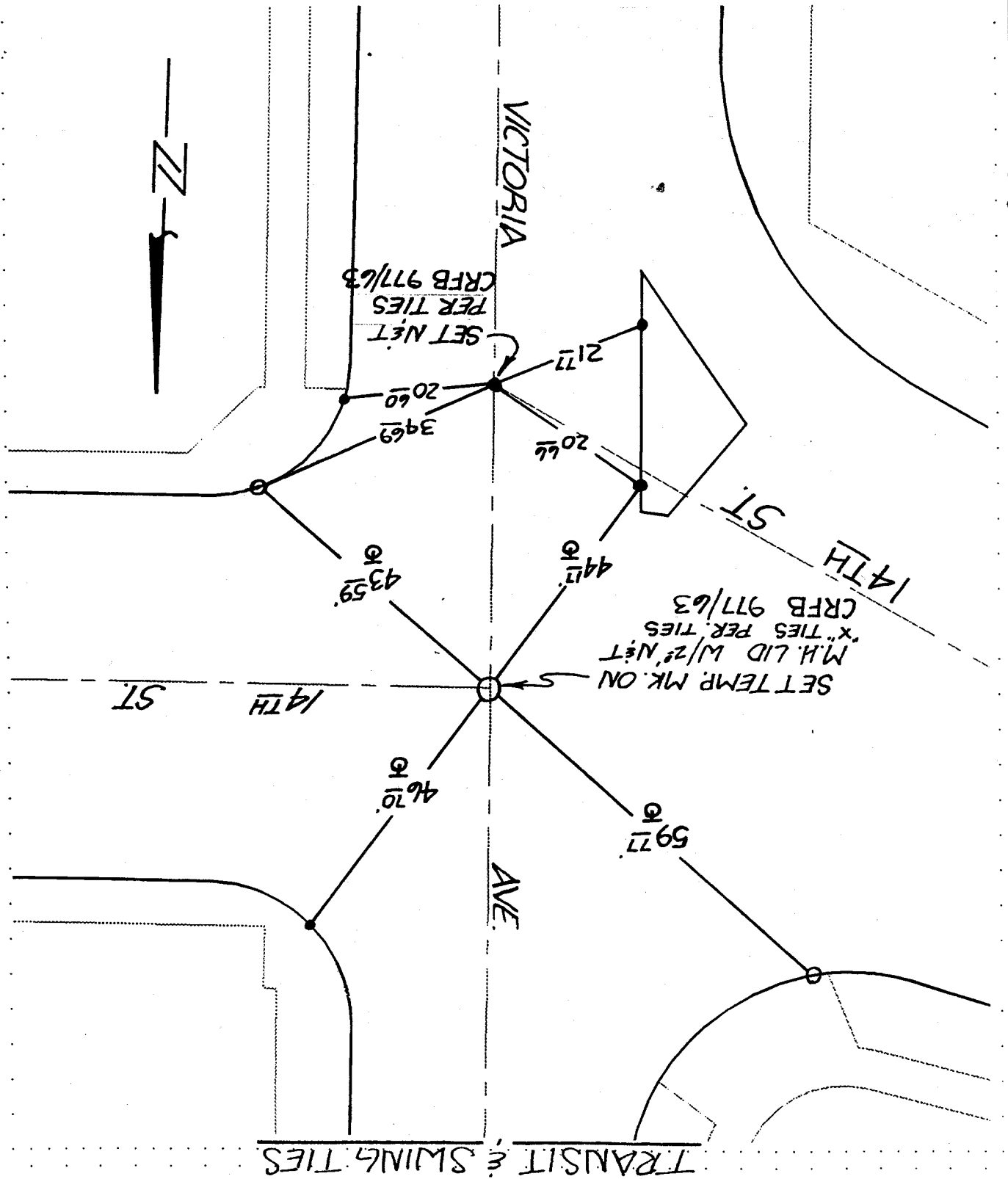


FILE NO.:
OF 2 SHEETS
SHEET 1

OFFICIAL TIE PLAT
CITY OF RIVERSIDE
These ties are for the purpose of perpetuating the found
monumentation. No claim is made as to the relationship of
the points or lines shown hereon to true boundary locations.

SCALE: N.T.S.
DATE: JAN. 23, 97
DR. BY: FINNEY, J
W.O.:
F.B.:

● FD. LD. & TK. on T/C
○ SET LD. & TK. On T/C
■ FD. "C" Nail on T/C
X FD. Ramset Nail on T/C



STREET 14TH ST
9344 TIE
X-STREET VICTORIA AVE 28 A
OFFICE USE ONLY

TRANSIT & SWING TIES