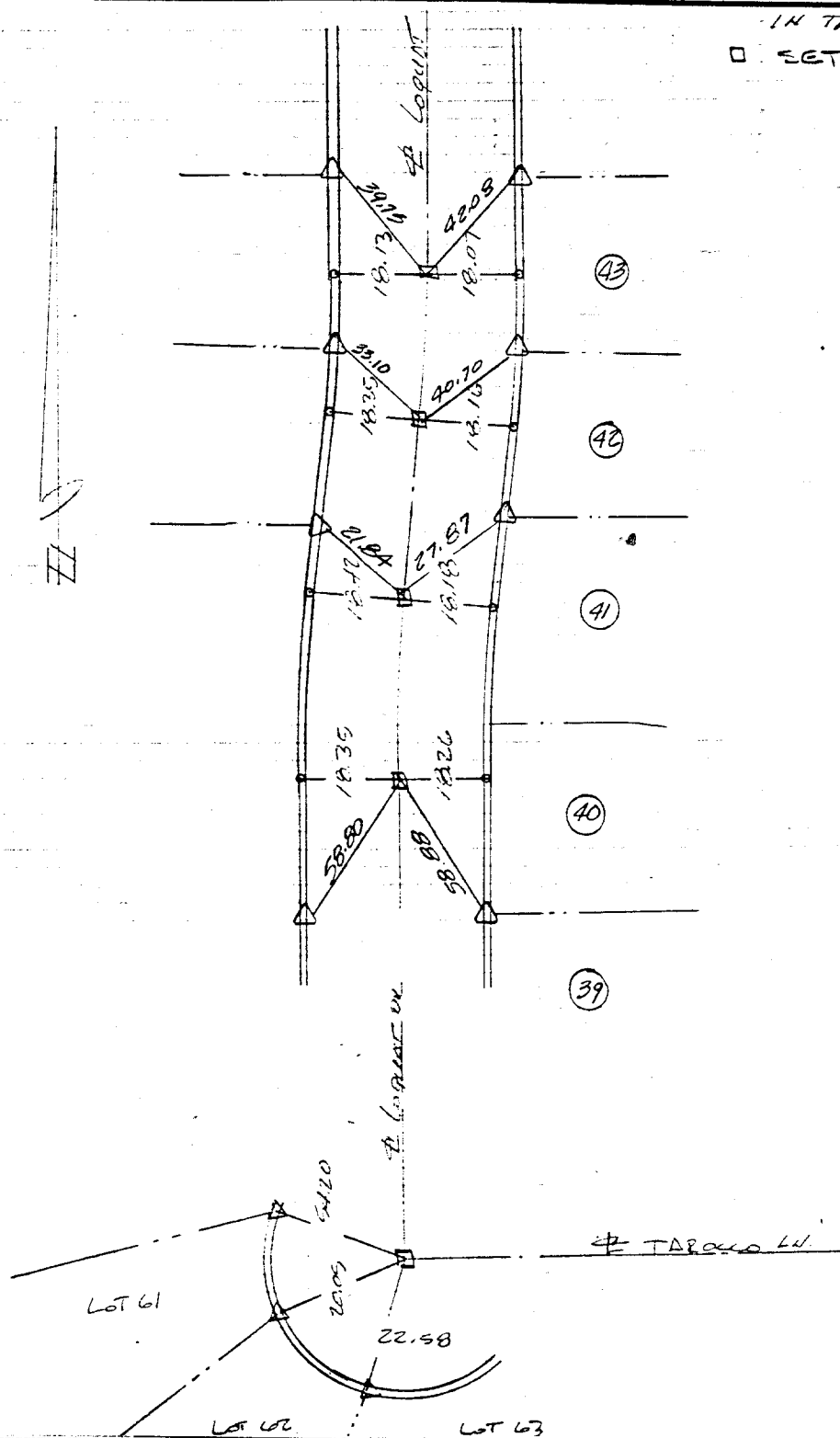


Street: **TORRECO LN**  
**9365 TIE**  
**LN**  
 X-Street: **LOQUAT DR.**  
 OFFICIAL USE ONLY

14 7/16  
 SET 1" I.P. LS 3018



TIE SHEET  
 5 OF 5

- ✕ FD. Ramset Nail on T/C
- FD. LD. & TK. on T/C
- FD. "C" Nail on T/C
- Set LD. & TK. on T/C

**OFFICIAL TIE PLAT**  
**CITY OF RIVERSIDE**

*These ties are for the purpose of perpetuating the found monumentation. No claim is made as to the relationship of the points or lines shown hereon to true boundary locations.*

Scale:  
 Date:  
 Drawn by:  
 W.O.:  
 F.B.:

Sheet 1 of 1  
 File No.: