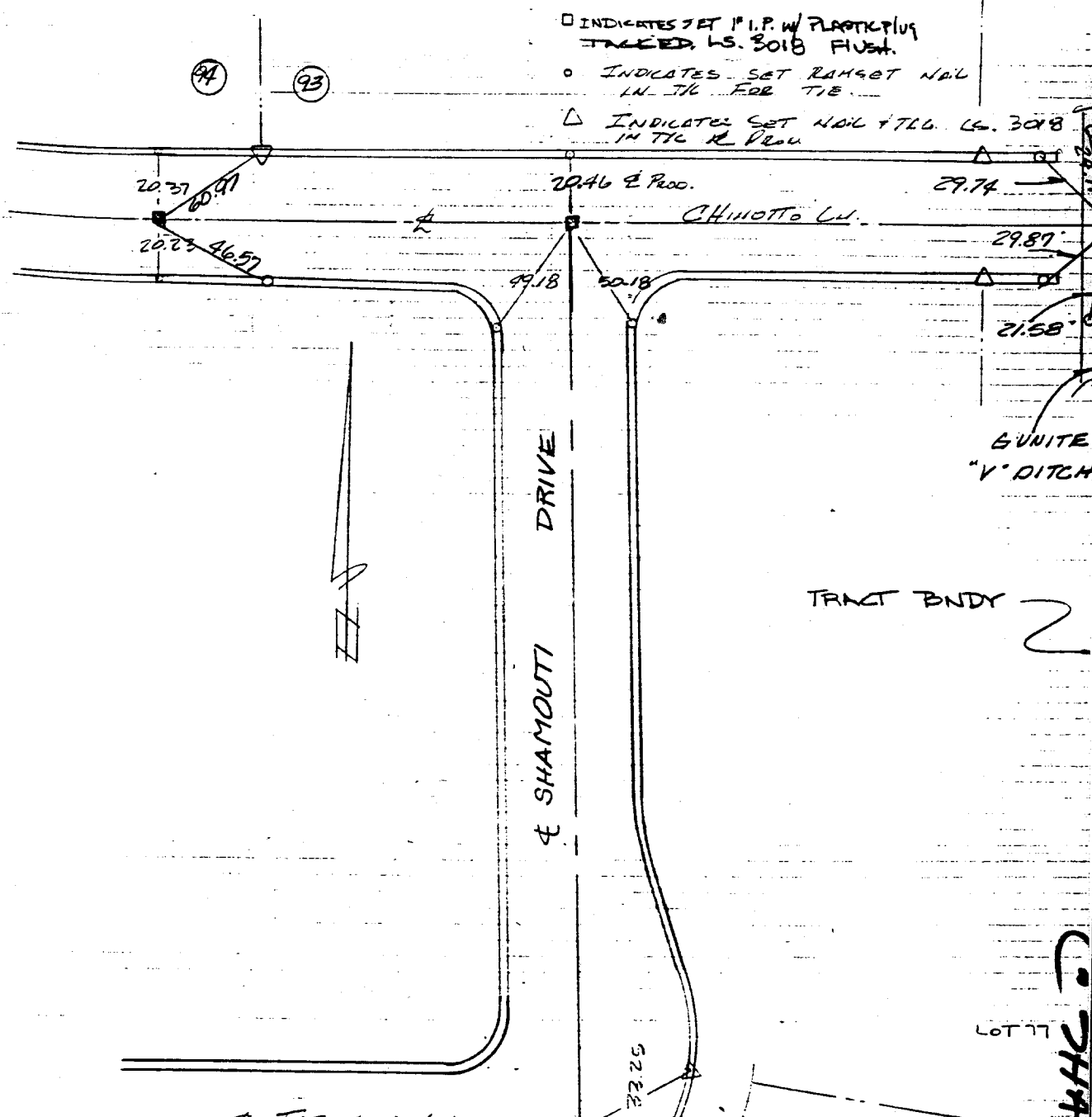


REVIEW OF 2 TIES

NO. 19752-2 TRACT BOUNDARY W.O.No. 57,922 DATE 3-12-88

SURVEY PARTY DEWEA BASLER REF. \_\_\_\_\_ A.M. \_\_\_\_\_

Street: **TARROCCO LN.**  
**9356 TIE**  
**CHAMOUTI DR.**  
X-Street: \_\_\_\_\_  
OFFICIAL USE ONLY



- ✕ FD. Ramset Nail on T/C
- FD. "C" Nail on T/C

- FD. LD. & TK. on T/C
- Set LD. & TK. on T/C

# OFFICIAL TIE PLAT

## CITY OF RIVERSIDE

These ties are for the purpose of perpetuating the found monumentation. No claim is made as to the relationship of the points or lines shown hereon to true boundary locations.

Scale: \_\_\_\_\_  
 Date: \_\_\_\_\_  
 Drawn by: \_\_\_\_\_  
 W.O.: \_\_\_\_\_  
 F.B.: \_\_\_\_\_

Sheet 1 of 1  
File No.: \_\_\_\_\_