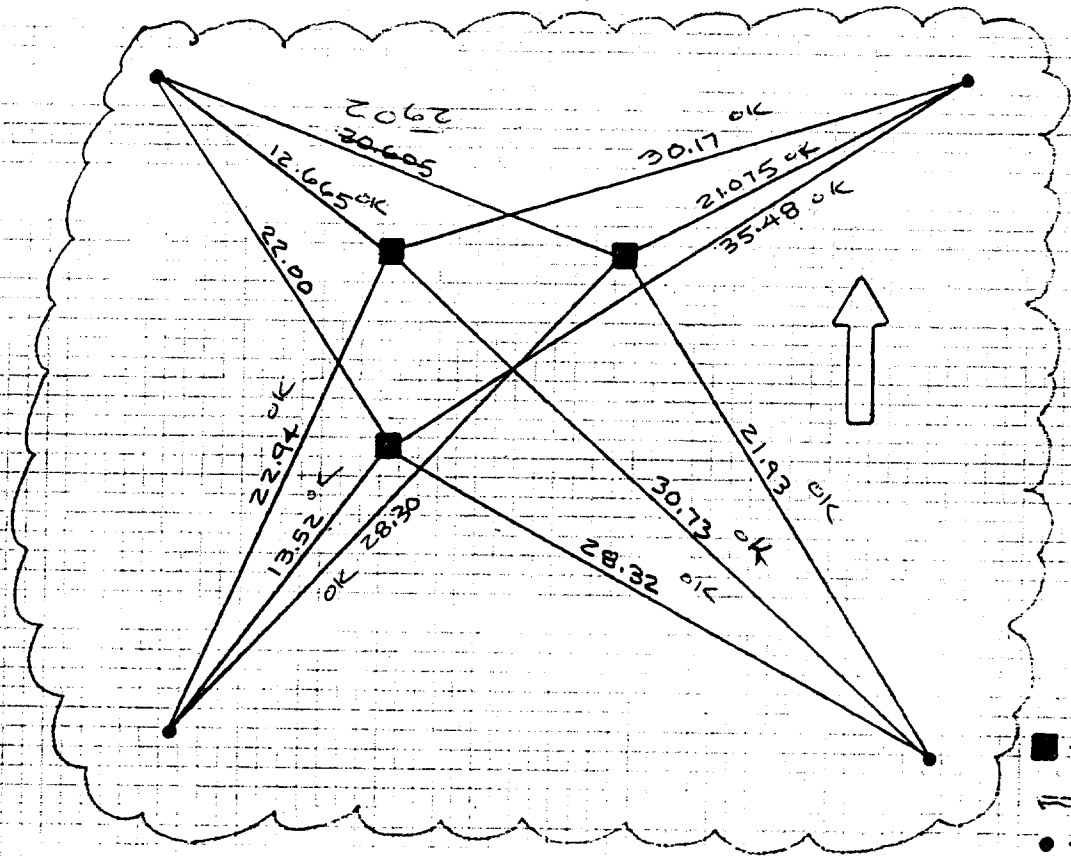
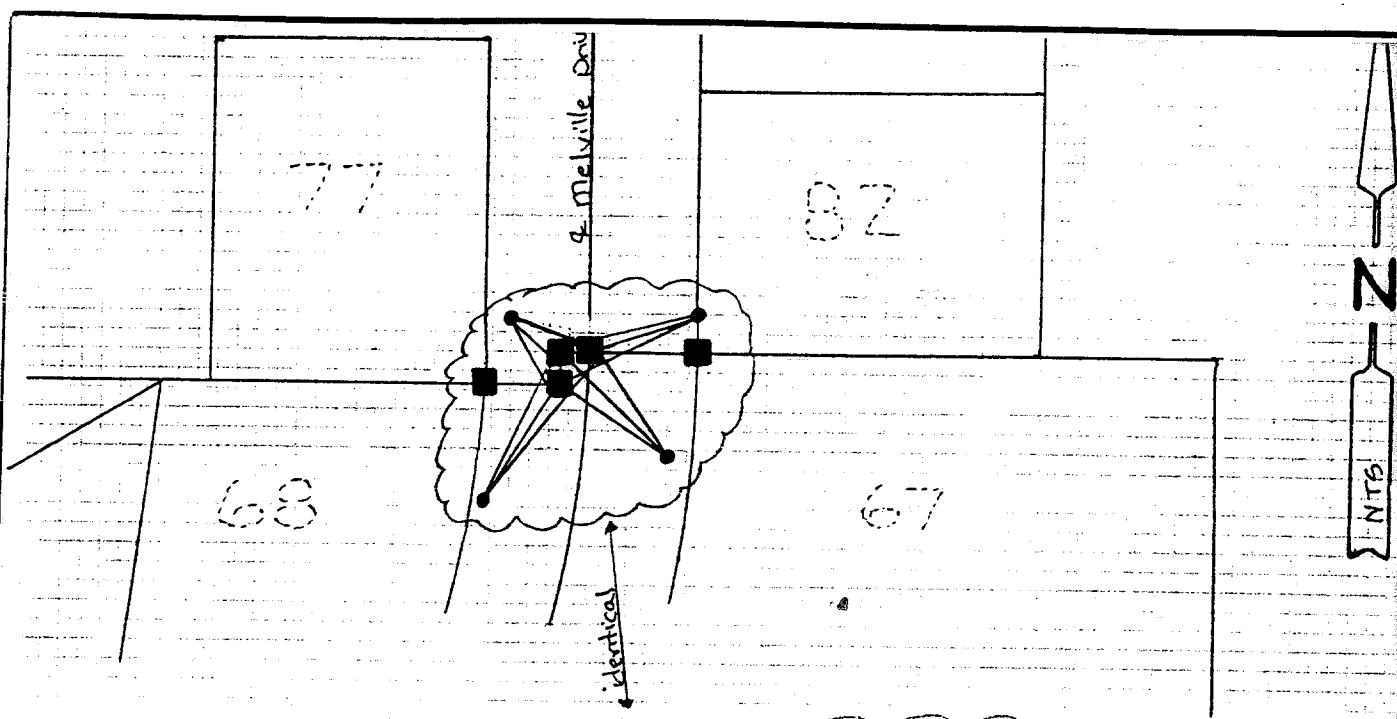


Street: **MELVILLE DR.**
911 TIF
 X-Street: _____
 OFFICIAL USE ONLY



Note:
 ■ — indicates set I.I. Ls 3018 Flush
 ○ — indicates set R nail in TC

- ✕ FD. Ramset Nail on T/C
- FD. "C" Nail on T/C
- FD. LD. & TK. on T/C
- Set LD. & TK. on T/C

Scale:
 Date:
 Drawn by:
 W.O.:
 F.B.:

OFFICIAL TIE PLAT

CITY OF RIVERSIDE

These ties are for the purpose of perpetuating the found monumentation. No claim is made as to the relationship of the points or lines shown hereon to true boundary locations.

Sheet 1 of 1
 File No.: