

5

K.H. J.V.

SURVEY NO. \_\_\_\_\_

DATE: 7-19-86

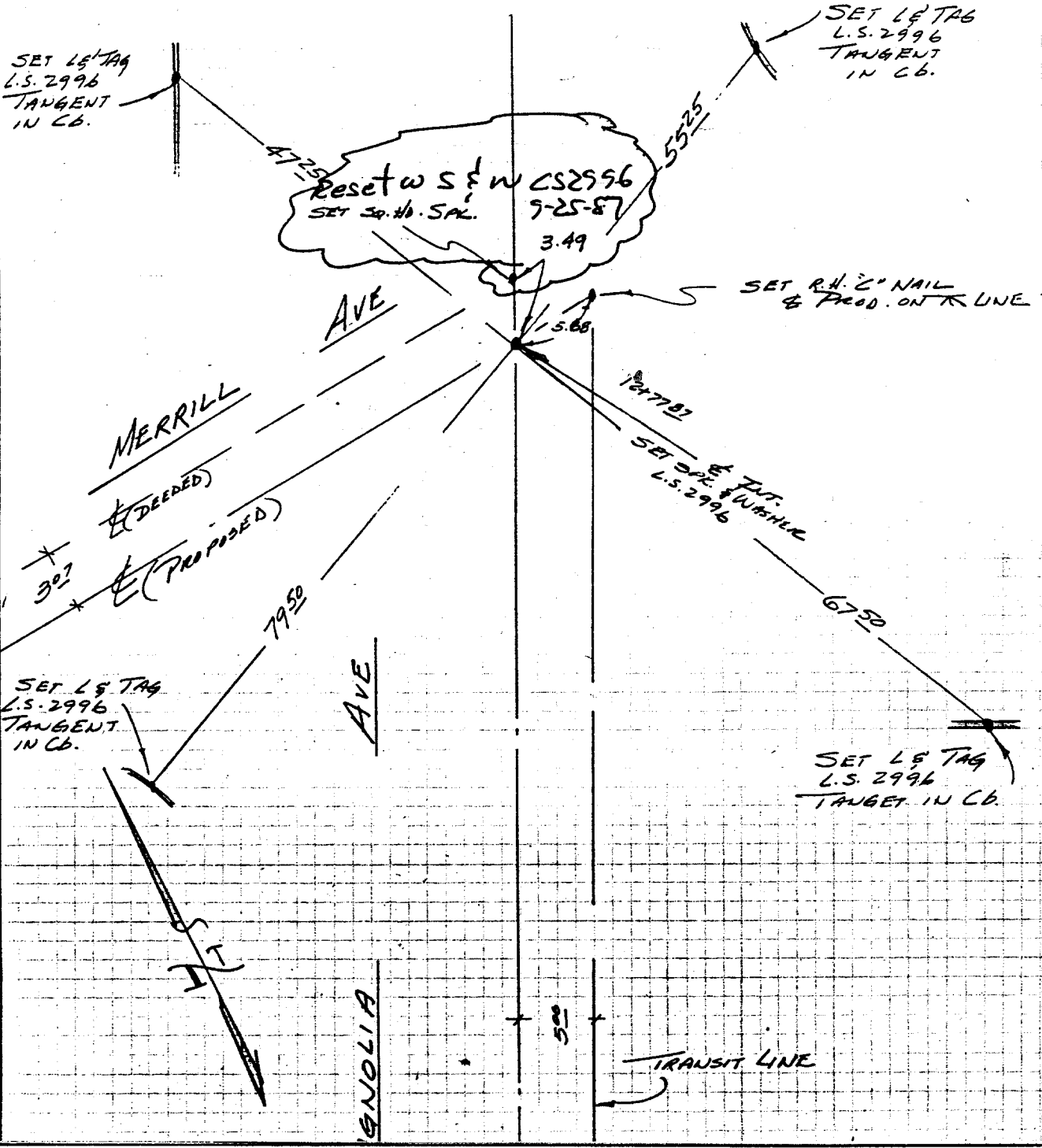
SURVEY FIELD NOTES

SHEET NO. 6 OF \_\_\_\_\_

Street: **MERRILL AVE**  
**9417 TIE**  
X-Street:  
OFFICIAL USE ONLY

CLIENT: AMERICAN SAV. & LOAN

ENGINEERS AND CIVIL ENGINEERS  
1000 G STREET, LOS ANGELES, CALIFORNIA 90013  
2661



- ✕ FD. Ramset Nail on T/C
- FD. "C" Nail on T/C

- FD. LD. & TK. on T/C
- Set LD. & TK. on T/C

Scale: \_\_\_\_\_  
 Date: \_\_\_\_\_  
 Drawn by: \_\_\_\_\_  
 W.O.: \_\_\_\_\_  
 F.B.: \_\_\_\_\_

**OFFICIAL TIE PLAT**  
**CITY OF RIVERSIDE**

*These ties are for the purpose of perpetuating the found monumentation. No claim is made as to the relationship of the points or lines shown hereon to true boundary locations.*

Sheet 1 of 1  
 File No.: \_\_\_\_\_