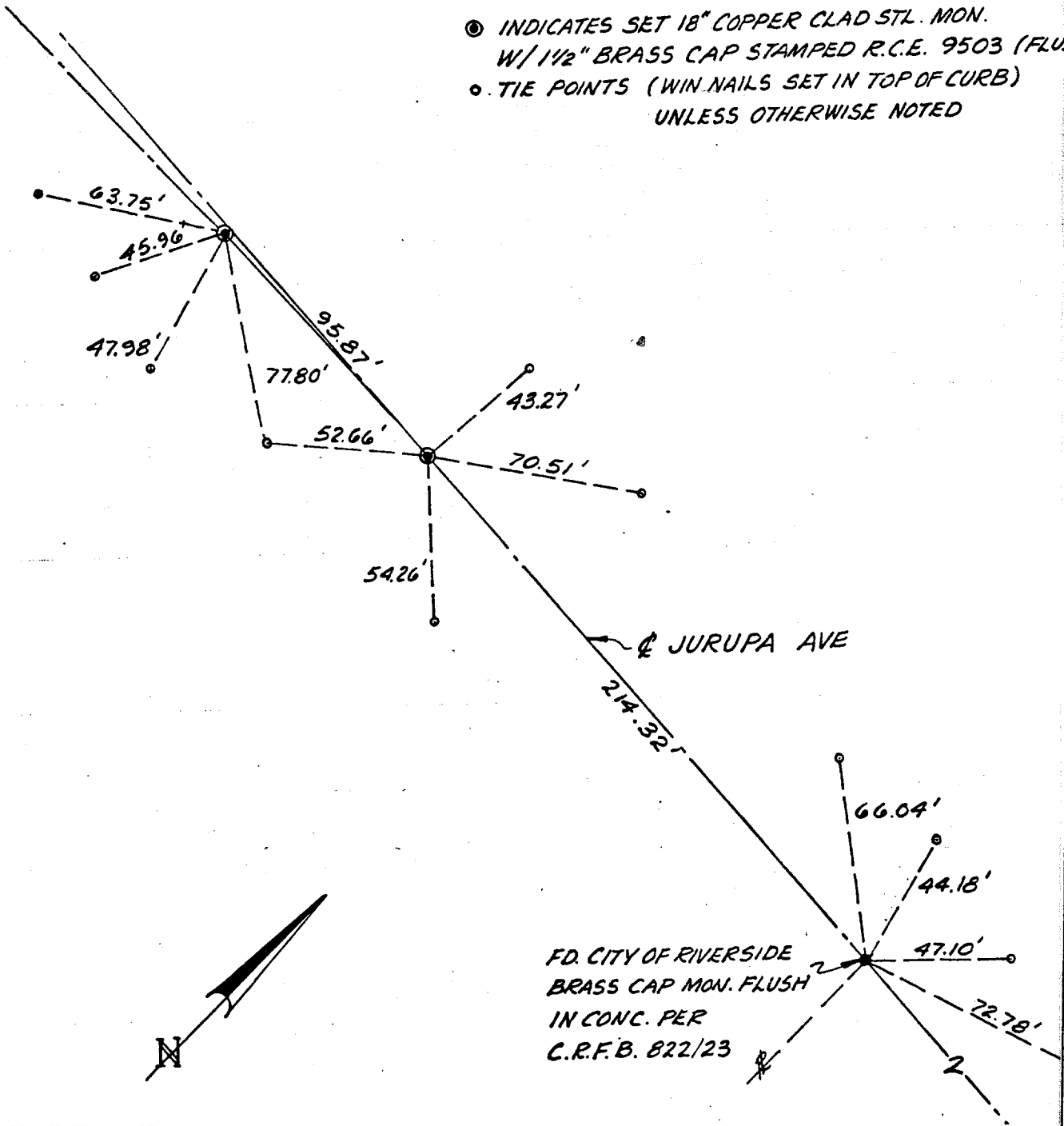


CHKD. BY. _____ DATE _____
 SCALE 1" = 50'

74390 HIGHWAY 111
 PALM DESERT, CALIFORNIA 92260
 (714) 346-7481

- ⊙ INDICATES SET 18" COPPER CLAD STL. MON.
 W/ 1/2" BRASS CAP STAMPED R.C.E. 9503 (FLU.)
- TIE POINTS (WIN NAILS SET IN TOP OF CURB)
 UNLESS OTHERWISE NOTED

Street: **JURUPA AVE.**
9435 TIE
 X-Street: **WY OF FLORENCE**
 OFFICIAL USE ONLY



- ✕ FD. Ramset Nail on T/C
- FD. LD. & TK. on T/C
- FD. "C" Nail on T/C
- Set LD. & TK. on T/C

Scale: _____
 Date: _____
 Drawn by: _____
 W.O.: _____
 F.B.: _____

OFFICIAL TIE PLAT CITY OF RIVERSIDE

These ties are for the purpose of perpetuating the found monumentation. No claim is made as to the relationship of the points or lines shown hereon to true boundary locations.

Sheet 1 of 1
 File No.: _____