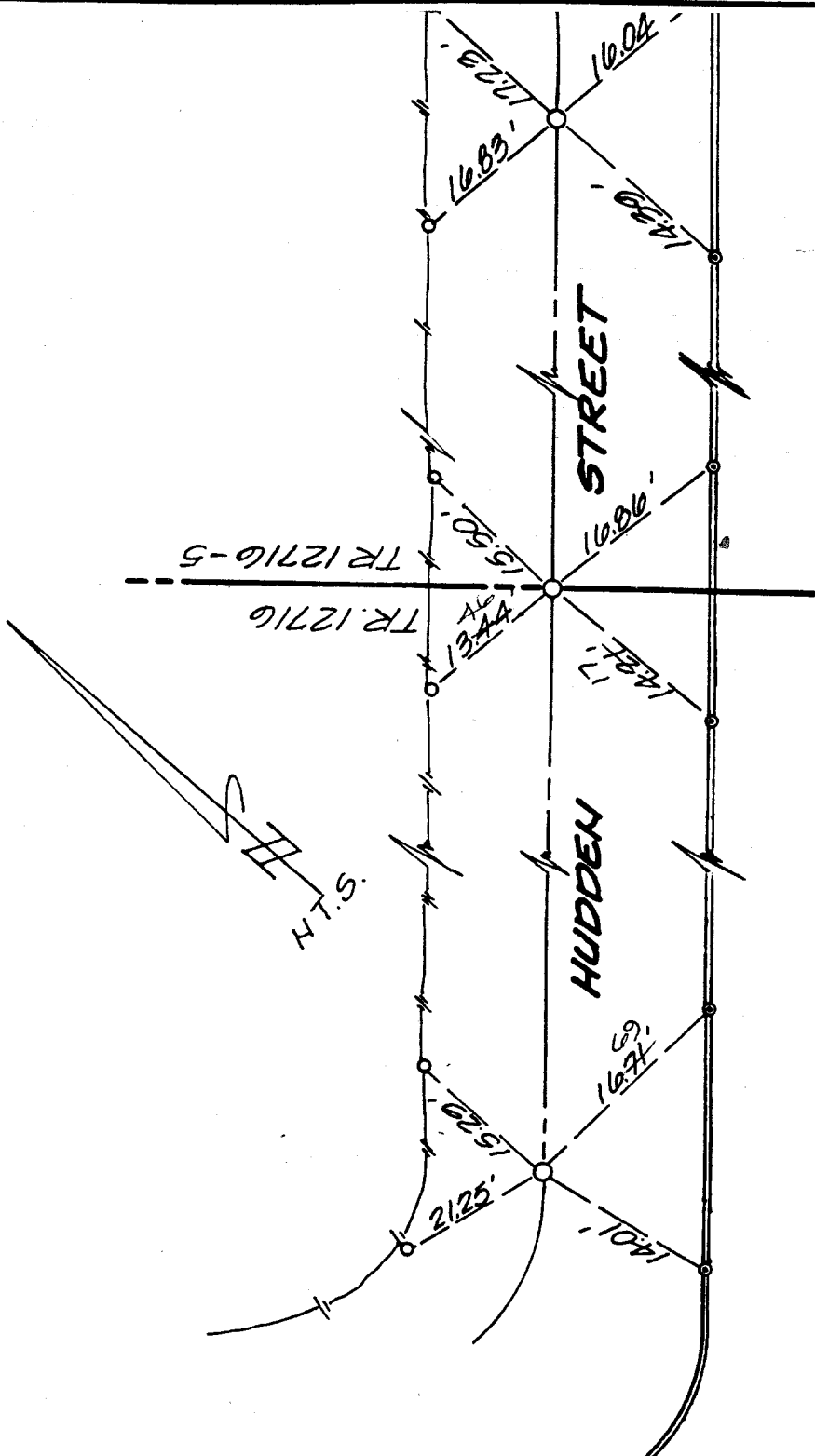


SHEET 4

TR 12710-5



INDICATES 1" I.P. W/ TAG L.S. 5390 FLUSH
 INDICATES NAIL & TIN SET AT EDGE OF PAVEMENT
 INDICATES LEAD & TACK SET IN TOP OF CURB.

ADKAN ENGINEERS
 6869 Airport Drive, Suite 3
 Riverside, California 92504
 (714)688-0241

Street: **HUDDEN ST.**
 9439 TIF
 X-Street:
 OFFICIAL USE ONLY

- ✕ FD. Ramset Nail on T/C
- FD. LD. & TK. on T/C
- FD. "C" Nail on T/C
- Set LD. & TK. on T/C

Scale:
 Date:
 Drawn by:
 W.O.:
 F.B.:

OFFICIAL TIE PLAT
 CITY OF RIVERSIDE

These ties are for the purpose of perpetuating the found monumentation. No claim is made as to the relationship of the points or lines shown hereon to true boundary locations.

Sheet 1 of 1
 File No.: