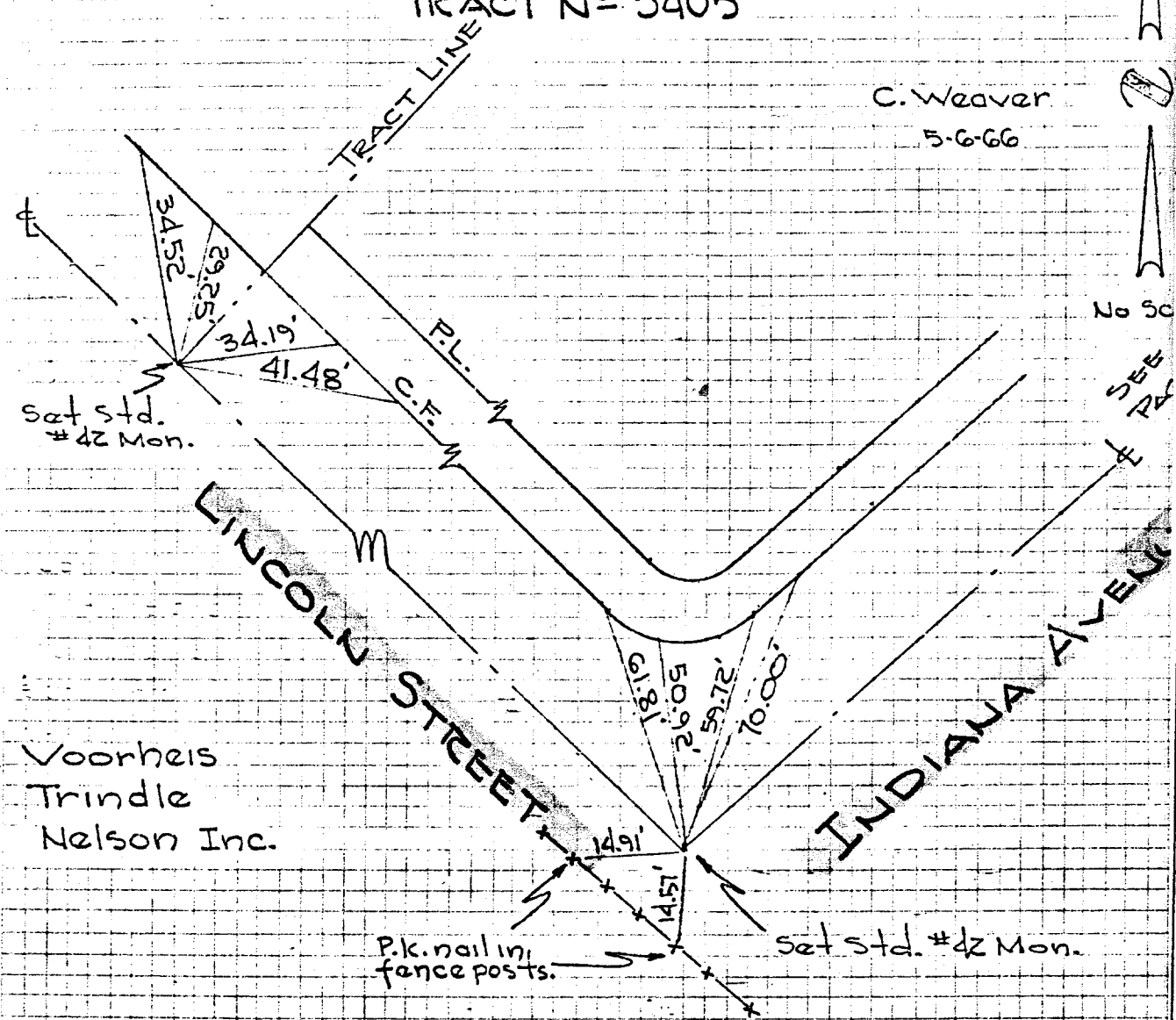


E TIES
 RIVERSIDE COUNTY
 TRACT No 3405

C. Weaver
 5-6-66



Voorheis
 Trindle
 Nelson Inc.

Note:
 All ties are lead & tack

- ✕ FD. Ramset Nail on T/C
- FD. LD. & TK. on T/C
- FD. "C" Nail on T/C
- Set LD. & TK. on T/C

Scale: _____
 Date: _____
 Drawn by: _____
 W.O.: _____
 F.B.: _____

OFFICIAL TIE PLAT
 CITY OF RIVERSIDE

These ties are for the purpose of perpetuating the found monumentation. No claim is made as to the relationship of the points or lines shown hereon to true boundary locations.

Sheet 1 of 1
 File No.: _____

Street: **INDIANA AV.**
 9554 TIE
 X-Street: **LINCOLN ST.**
 OFFICIAL USE ONLY