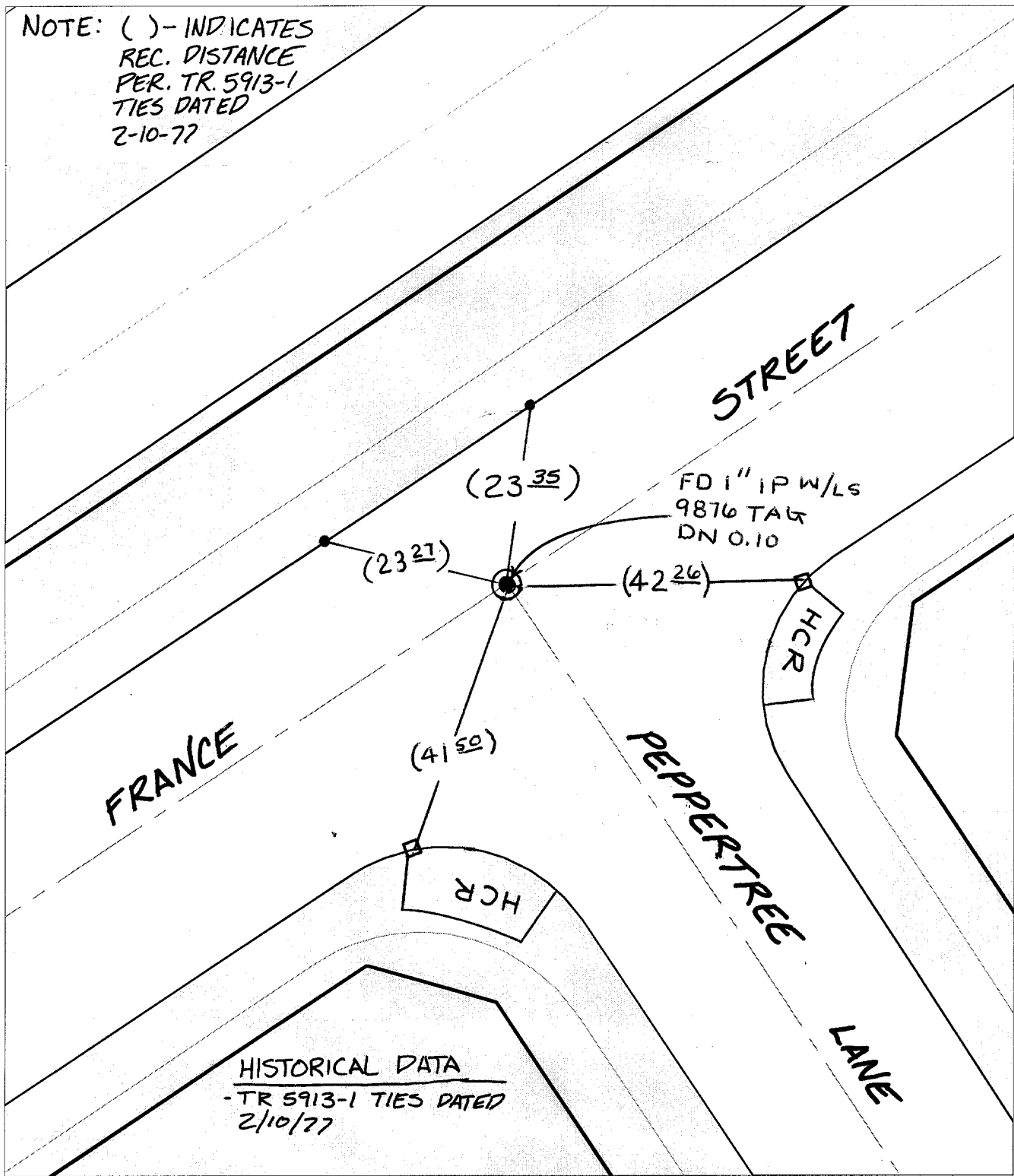


TRANSIT TIES

NOTE: () - INDICATES
REC. DISTANCE
PER. TR. 5913-1
TIES DATED
2-10-77



Street: **9476 TIF** FRANCE STREET
X-Street: PEPPERTREE LANE
OFFICIAL USE ONLY

HISTORICAL DATA
- TR 5913-1 TIES DATED
2/10/77

- ✕ FD. Ramset Nail on T/C ● FD. LD. & TK. on T/C
- FD. "C" Nail on T/C ○ Set LD. & TK. on T/C

P.K. and City Engineer tag to be set @
surface after street construction is
complete. (If possible)

Scale: 1" = 20'
Date: 05/09/01
Drawn by: SURVEY
F.B.:
TR-Sec: T3SR5W-10

OFFICIAL TIE PLAT CITY OF RIVERSIDE

*These ties are for the purpose of perpetuating the found
monumentation. No claim is made as to the relationship of
the points or lines shown hereon to true boundary locations.*



Sheet 1 of 1
Cadme MB: 69-3