

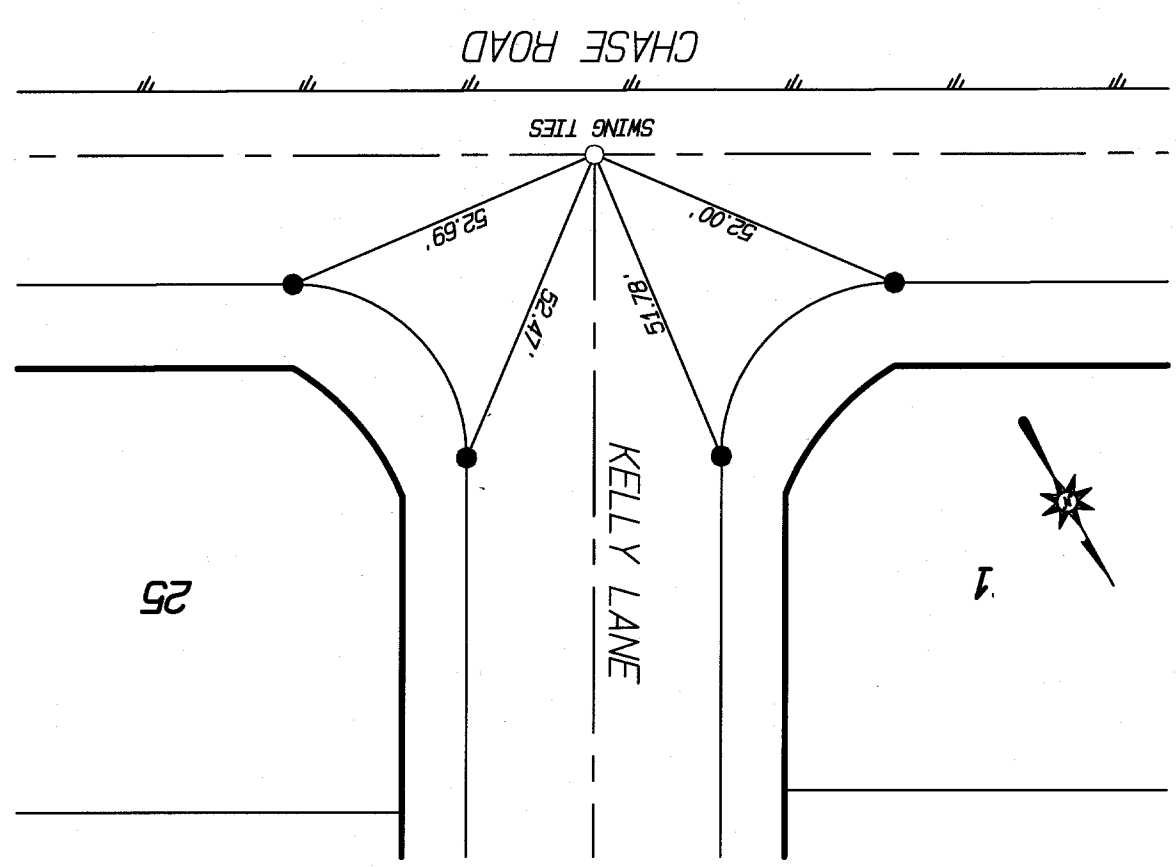
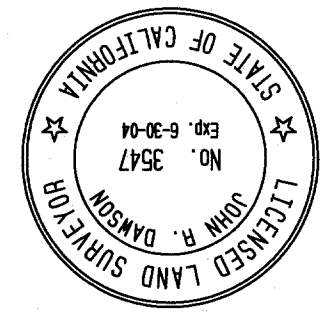
STREET CHASE ROAD
 9978 TIF
 X-STREET
 OFFICE USE ONLY
 KELLY LANE

F.B.:
 M.O.: 022.23
 DR. BY: SRD
 DATE: 2/23/2001
 SCALE: 1" = 30'

PREPARED BY:
 CITY OF RIVERSIDE
 OFFICIAL TIE PLAT

FILE NO.:
 OF 6 SHEETS
 SHEET 1

INTEGRA ENGINEERING, INC.
 LAND SURVEYORS * CIVIL ENGINEERS
 621 E. CARNEGIE DRIVE, #120, SAN BERNARDINO, CA 92408
 TELEPHONE (909) 383-0200 FAX (909) 383-0203



NOTE: ALL TIES ARE TRANSIT TIES UNLESS OTHERWISE NOTED
 ○ INDICATES SET 8" BOAT SPIKE AND L.S. 3547 TAG FLUSH UNLESS OTHERWISE NOTED
 ● INDICATES SET NAIL IN TOP OF CURB UNLESS OTHERWISE NOTED
 ⊙ INDICATES SET NAIL AND L.S. 3547 TAG IN CURB ON LOT LINE PROJECTED UNLESS OTHERWISE NOTED