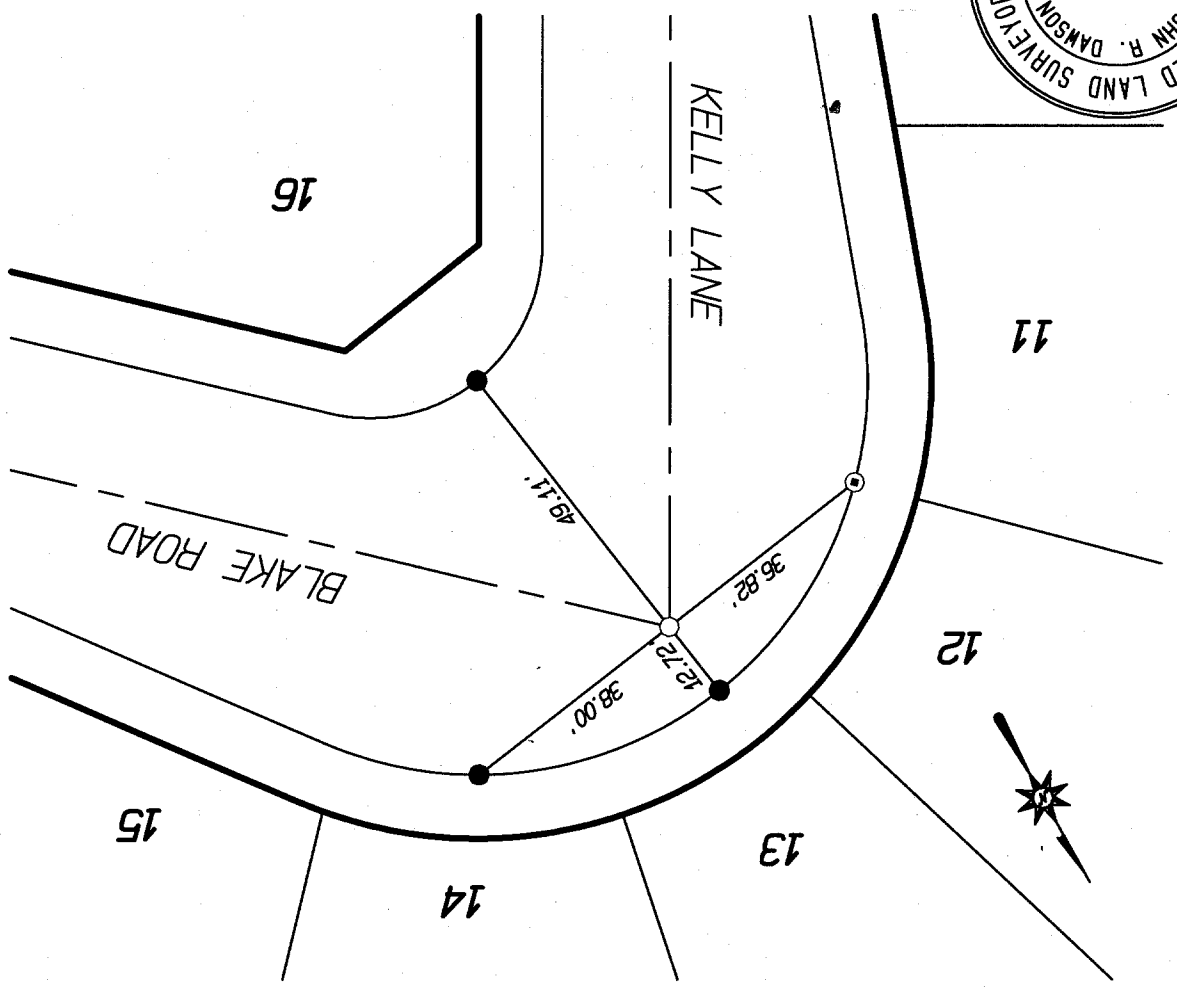
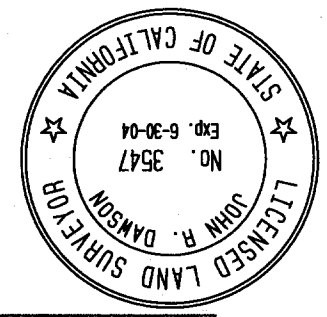


STREET **KELLY LANE** **9991 TIE** X-STREET **BLAKE ROAD**  
 OFFICE USE ONLY

F.B.:  
 M.O.: 022.23  
 DR. BY: SRD  
 DATE: 2/23/2001  
 SCALE: 1" = 20'

PREPARED BY:  
**INTEGRA ENGINEERING, INC.**  
 LAND SURVEYORS \* CIVIL ENGINEERS  
 621 E. CARNEGIE DRIVE, #120, SAN BERNARDINO, CA. 92408  
 TELEPHONE (909) 383-0200 FAX (909) 383-0203

OFFICIAL TIE PLAT  
 CITY OF RIVERSIDE  
 SHEET 5 OF 6 SHEETS  
 FILE No.:



NOTE: ALL TIES ARE TRANSIT TIES UNLESS OTHERWISE NOTED

- INDICATES SET 8" BOAT SPIKE AND L.S. 3547 TAG FLUSH UNLESS OTHERWISE NOTED
- INDICATES SET NAIL IN TOP OF CURB UNLESS OTHERWISE NOTED
- ⊙ INDICATES SET NAIL AND L.S. 3547 TAG IN CURB ON LOT LINE PROJECTED UNLESS OTHERWISE NOTED