

STREET CHASE ROAD
9983 TIE
 X-STREET I.P. W. OF LA CADENA DR. WEST
 OFFICE USE ONLY

SCALE: 1" = 20'

DATE: 2/23/2001

DR. BY: SRD

M.O.: 022.23

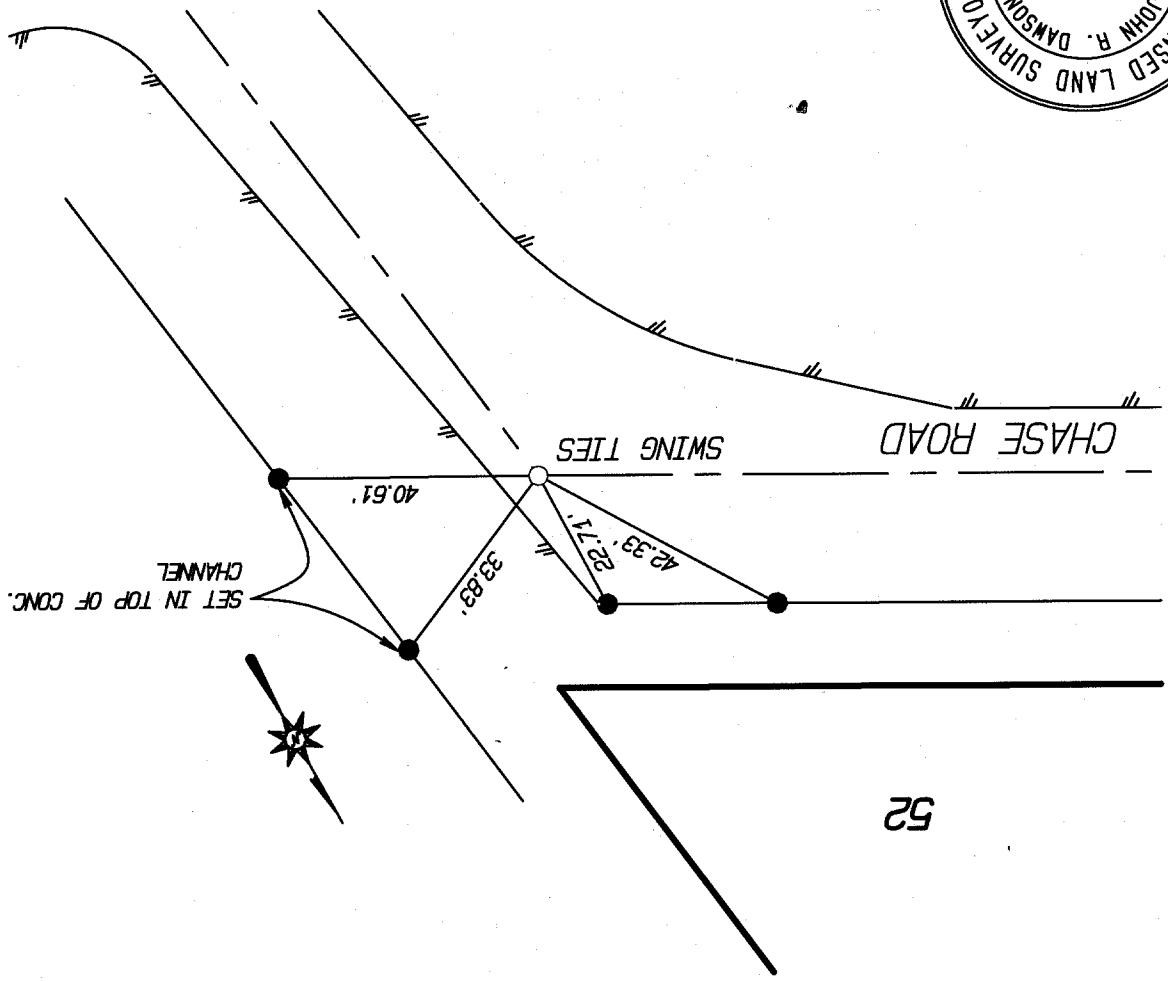
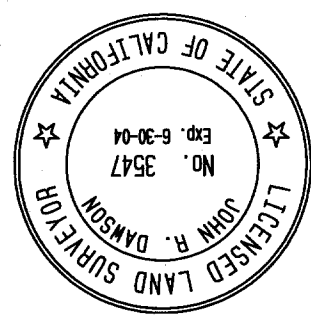
F.B.:

OFFICIAL TIE PLAT
 CITY OF RIVERSIDE

PREPARED BY:

INTEGRA ENGINEERING, INC.
 LAND SURVEYORS & CIVIL ENGINEERS
 621 E. CARNEGIE DRIVE, #120, SAN BERNARDINO, CA 92408
 TELEPHONE (909) 383-0200 FAX (909) 383-0203

FILE No.:
 OF 6 SHEETS
 SHEET 6



NOTE: ALL TIES ARE TRANSIT TIES UNLESS OTHERWISE NOTED

- INDICATES SET 8" BOAT SPIKE AND L.S. 3547 TAG FLUSH UNLESS OTHERWISE NOTED
- INDICATES SET NAIL IN TOP OF CURB
- ⊙ INDICATES SET NAIL AND L.S. 3547 TAG IN CURB ON LOT LINE PROJECTED UNLESS OTHERWISE NOTED