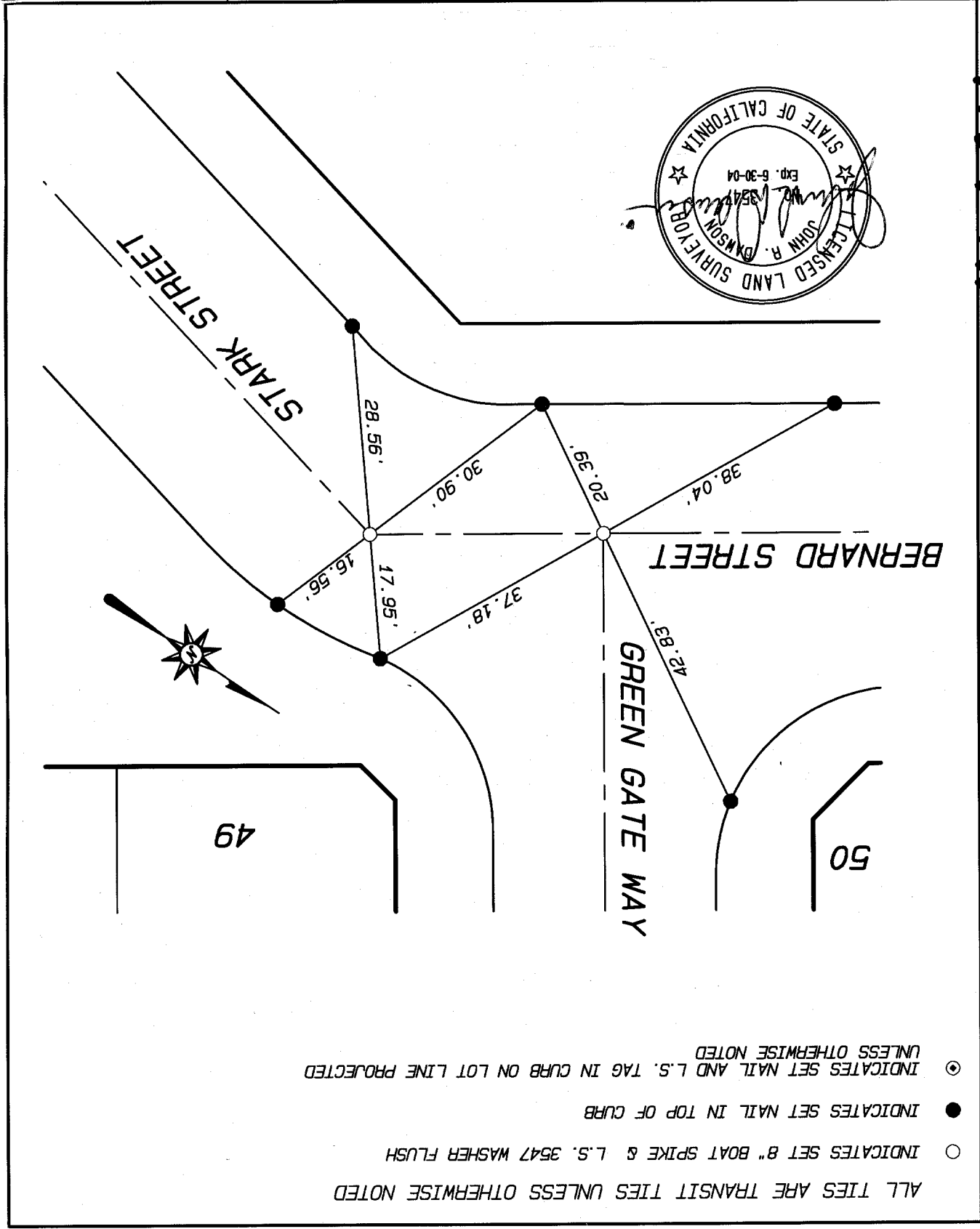


STREET **BERNARD ST. @ GREEN GATE WAY** X-STREET **STARK STREET**
9989 TIF
 OFFICE USE ONLY

SCALE: 1" = 20'
 DATE: 2/28/01
 DR. BY: SRD
 W.O.: 022.18
 F.B.:

OFFICIAL TIE PLAT
 CITY OF RIVERSIDE
 PREPARED BY:
INTEGRA ENGINEERING, INC.
 LAND SURVEYORS & CIVIL ENGINEERS
 621 E. CARNEGIE DRIVE, #120, SAN BERNARDINO, CA 92408
 TELEPHONE (909) 383-0200 FAX (909) 383-0203

SHEET 1
 OF 2 SHEETS
 FILE NO.:



ALL TIES ARE TRANSIT TIES UNLESS OTHERWISE NOTED
 ○ INDICATES SET 8" BOAT SPIKE & L.S. 3547 WASHER FLUSH
 ● INDICATES SET NAIL IN TOP OF CURB
 ⊙ INDICATES SET NAIL AND L.S. TAG IN CURB ON LOT LINE PROJECTED UNLESS OTHERWISE NOTED