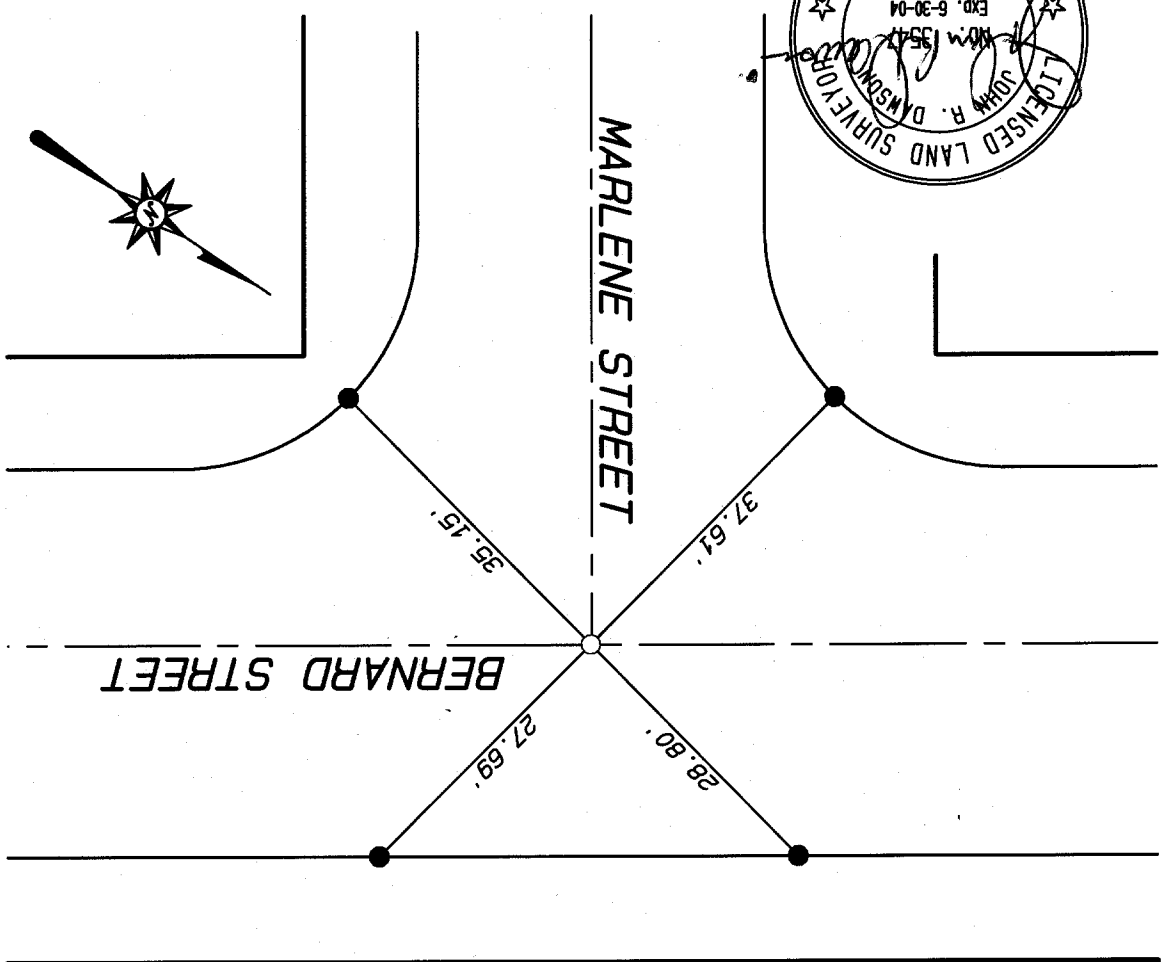
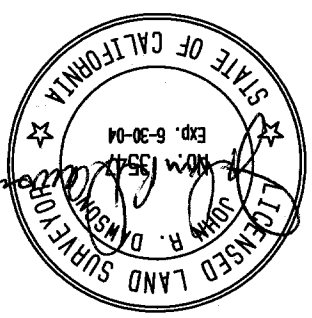


STREET BERNARD STREET X-STREET MARLENE STREET  
 9485 TIF OFFICE USE ONLY

SCALE: 1" = 20'  
 DATE: 2/28/01  
 DR. BY: SRD  
 W.O.: 022.18  
 F.B.:

OFFICIAL TIE PLAT  
 CITY OF RIVERSIDE  
 INTEGRRA ENGINEERING, INC.  
 LAND SURVEYORS & CIVIL ENGINEERS  
 621 E. CARNEGIE DRIVE, #120, SAN BERNARDINO, CA 92408  
 TELEPHONE (909) 383-0200 FAX (909) 383-0203

PREPARED BY:  
 OF 2 SHEETS  
 SHEET 2  
 FILE No.:



54  
 53  
 52  
 51

ALL TIES ARE TRANSIT TIES UNLESS OTHERWISE NOTED  
 ○ INDICATES SET 8" BOAT SPIKE & L.S. 3547 WASHER FLUSH  
 ● INDICATES SET NAIL IN TOP OF CURB  
 ⊙ INDICATES SET NAIL AND L.S. TAG IN CURB ON LOT LINE PROJECTED UNLESS OTHERWISE NOTED