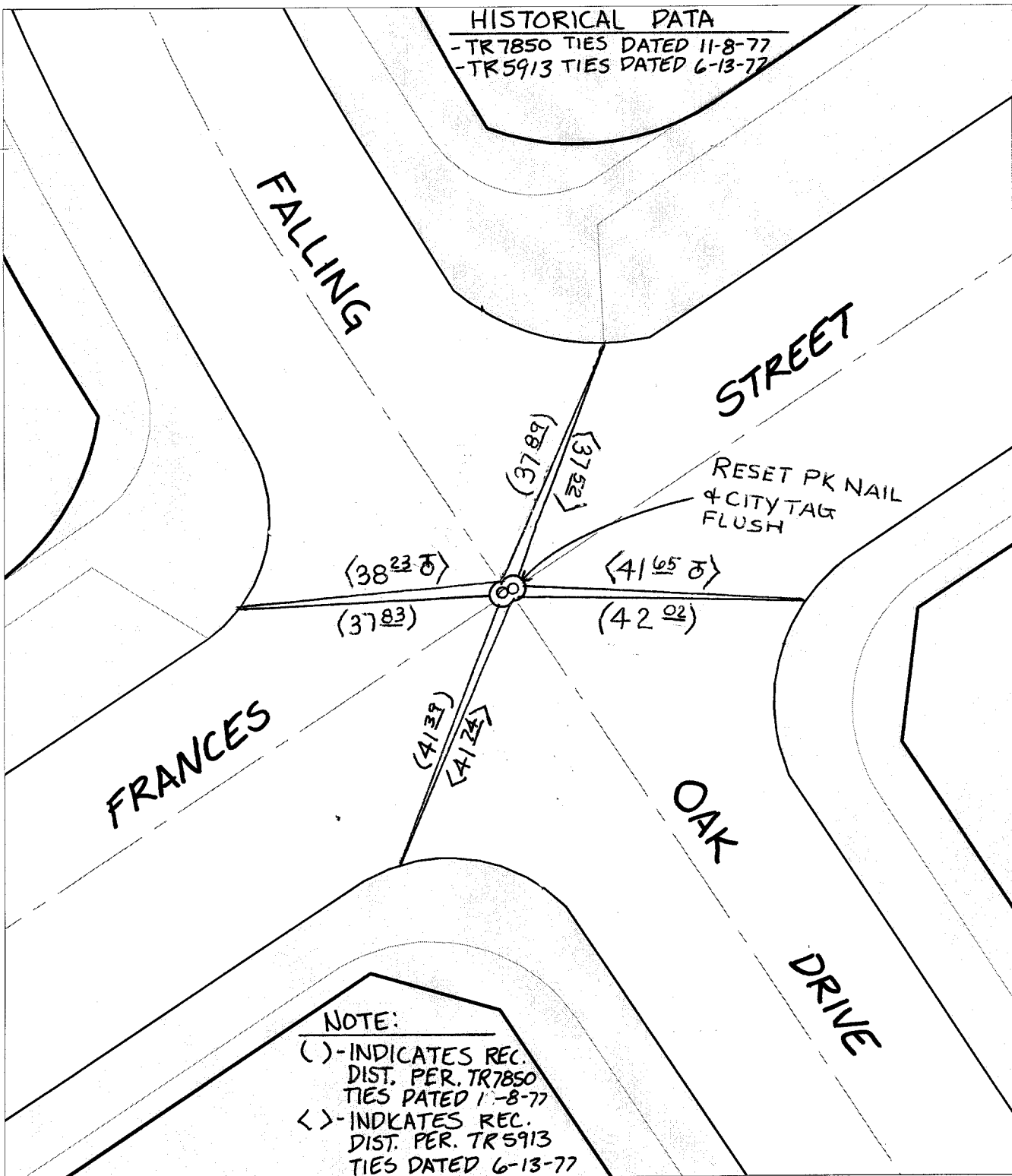


TRANSIT & SWING TIES

HISTORICAL DATA

- TR 7850 TIES DATED 11-8-77
- TR 5913 TIES DATED 6-13-77



NOTE:

- () - INDICATES REC. DIST. PER. TR 7850 TIES DATED 11-8-77
- < > - INDICATES REC. DIST. PER. TR 5913 TIES DATED 6-13-77

- ✕ FD. Ramset Nail on T/C
- FD. LD. & TK. on T/C
- FD. "C" Nail on T/C
- Set LD. & TK. on T/C

P.K. and City Engineer tag to be set @ surface after street construction is complete. (If possible)

Street: **C 9493** FRANCE STREET
TIF X-Street: FALLING OAK DRIVE
 OFFICIAL USE ONLY

Scale: 1" = 20'
 Date: 05/09/01
 Drawn by: SURVEY
 F.B.:
 TR-Sec: T3SR5W-10

OFFICIAL TIE PLAT CITY OF RIVERSIDE

These ties are for the purpose of perpetuating the found monumentation. No claim is made as to the relationship of the points or lines shown hereon to true boundary locations.



Sheet 1 of 1
 Cadme MB: 69-3