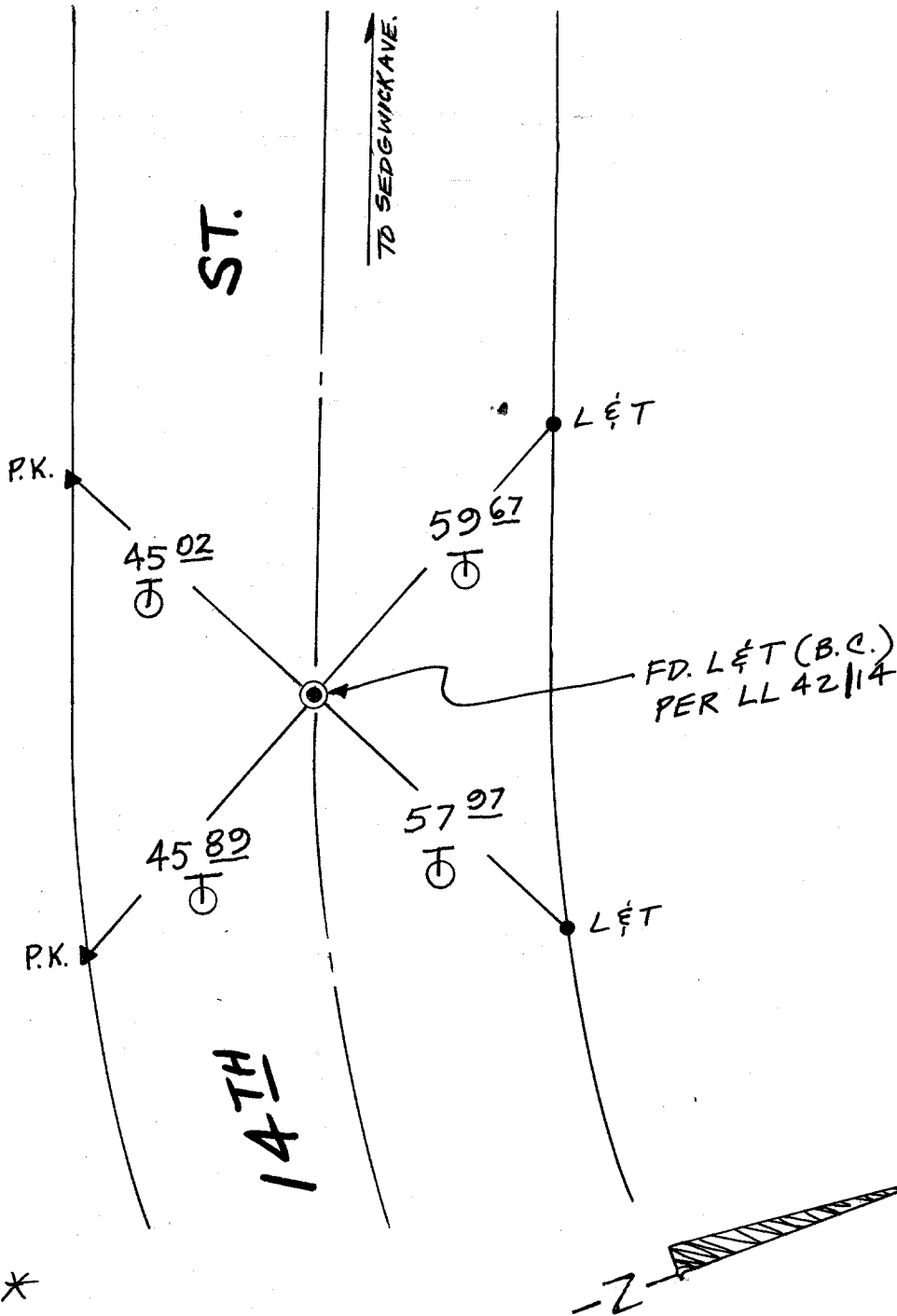


TRANSIT TIES



FLAT CHAINED

- ✕ FD. Ramset Nail on T/C
- FD. "C" Nail on T/C

- FD. LD. & TK. on T/C
- Set LD. & TK. on T/C

Street: 14TH ST. (B.C.)
9531 TIE

OFFICIAL USE ONLY

X-Street: E'LY OF SEDGWICK AVE.

Scale:

Date:

Drawn by:

W.O.:

F.B.:

OFFICIAL TIE PLAT CITY OF RIVERSIDE

These ties are for the purpose of perpetuating the found monumentation. No claim is made as to the relationship of the points or lines shown hereon to true boundary locations.

Sheet 1 of 1

File No.: