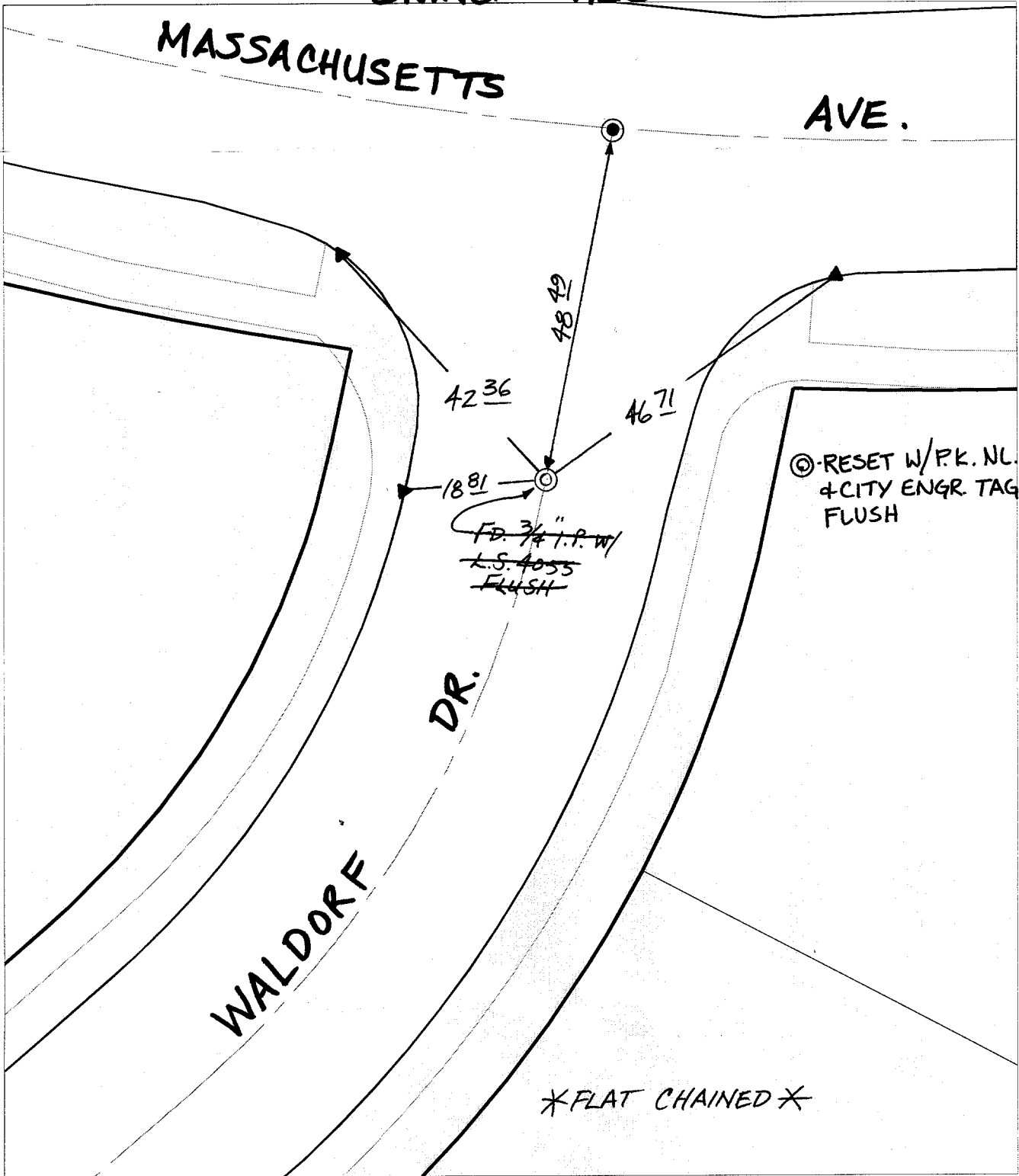


SWING TIES

MASSACHUSETTS

AVE.



⊙ - RESET W/PK. NL. & CITY ENGR. TAG FLUSH

FD. 3/4" I.P. W/
L.S. 4055
FLUSH

FLAT CHAINED

Street: WALDORF DR. (E.C.)
9533 TIF
OFFICIAL USE ONLY
X-Street of MASSACHUSETTS AVE.

- ✕ FD. Ramset Nail on T/C ● FD. LD. & TK. on T/C P.K. and City Engineer tag to be set @ surface after street construction is complete. (If possible)
- FD. "C" Nail on T/C ○ Set LD. & TK. on T/C

Scale: 1" = 20'
 Date: 04/24/01
 Drawn by: survey
 F.B.:
 TR-Sec: T2SR4W-20

OFFICIAL TIE PLAT

CITY OF RIVERSIDE

These ties are for the purpose of perpetuating the found monumentation. No claim is made as to the relationship of the points or lines shown hereon to true boundary locations.



Sheet 1 of 1
 Cadme MB: 27-6