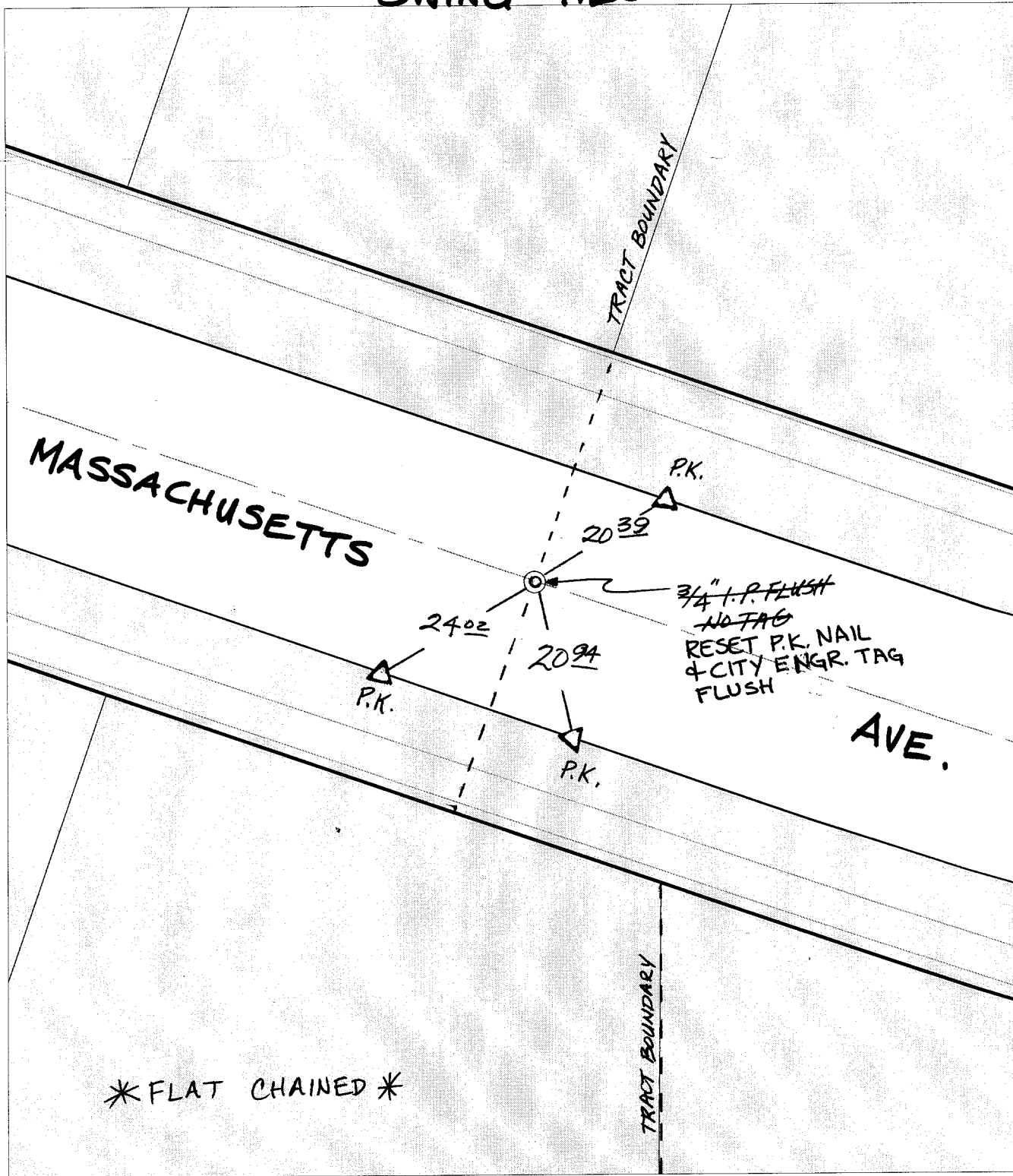


SWING TIES



Street: MASSACHUSETTS AVE. (TRCT. BNDY. X-Street: W'LY OF WALDORF DR.
 9535 TIE
 OFFICIAL USE ONLY

* FLAT CHAINED *

- FD. Ramset Nail on T/C FD. LD. & TK. on T/C P.K. and City Engineer tag to be set @ surface after street construction is complete. (If possible)
- FD. "C" Nail on T/C Set LD. & TK. on T/C

Scale: 1" = 20'
 Date: 04/17/01
 Drawn by: survey
 W.O.:
 F.B.:

OFFICIAL TIE PLAT CITY OF RIVERSIDE



These ties are for the purpose of perpetuating the found monumentation. No claim is made as to the relationship of the points or lines shown hereon to true boundary locations.

Sheet 1 of 1
 File No.: