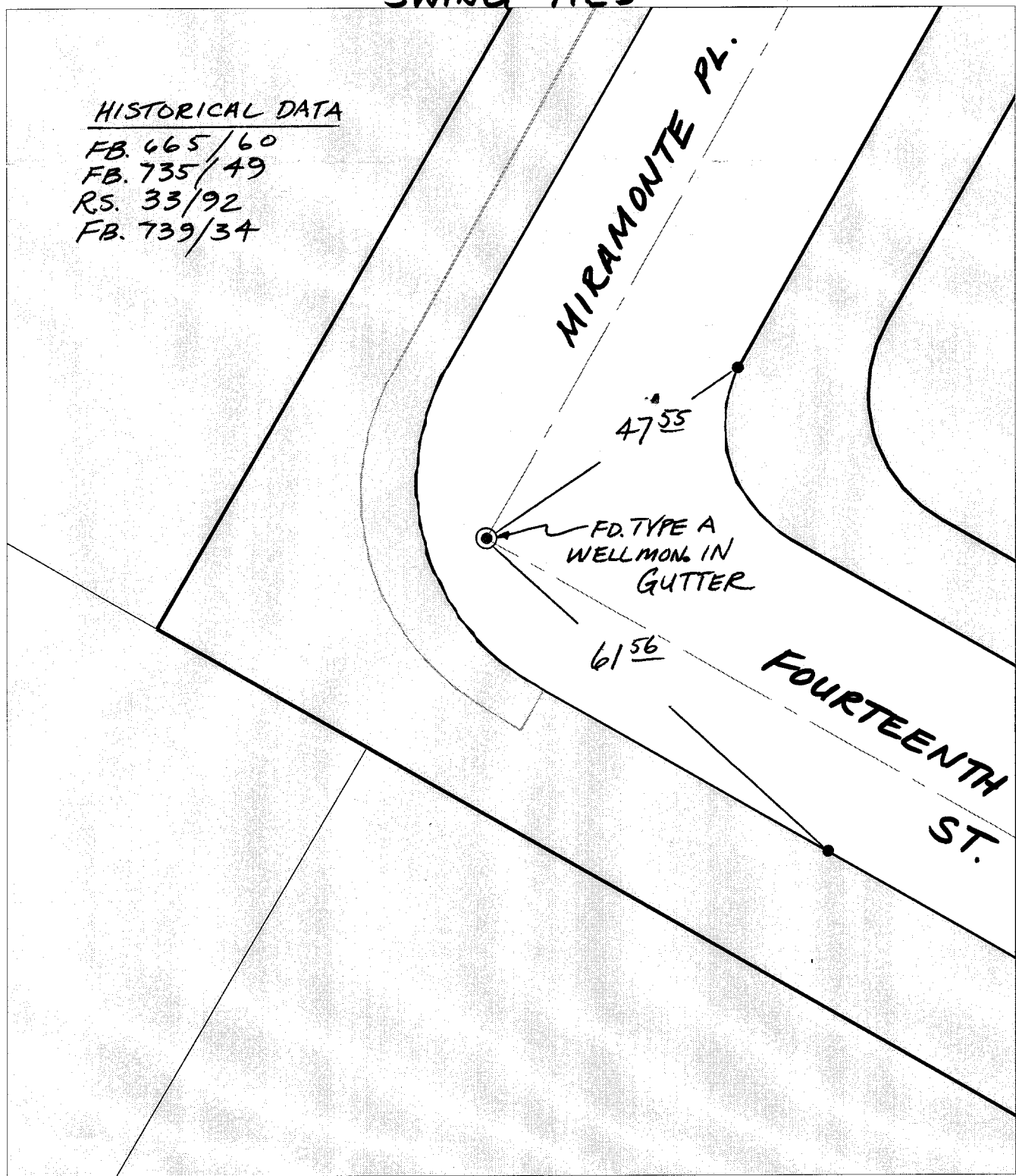


SWING TIES

HISTORICAL DATA

FB. 465/60
 FB. 735/49
 RS. 33/92
 FB. 739/34



Street: MIRAMONTE PL.
9528 TIE
 X-Street: FOURTEENTH ST.
 OFFICIAL USE ONLY

- ✕ FD. Ramset Nail on T/C ● FD. LD. & TK. on T/C
- FD. "C" Nail on T/C ○ Set LD. & TK. on T/C

P.K. and City Engineer tag to be set @ surface after street construction is complete. (If possible)

Scale: 1" = 20'
 Date: 03/13/01
 Drawn by: survey
 W.O.:
 F.B.:

OFFICIAL TIE PLAT
 CITY OF RIVERSIDE

These ties are for the purpose of perpetuating the found monumentation. No claim is made as to the relationship of the points or lines shown hereon to true boundary locations.



Sheet 1 of 1
 File No.: