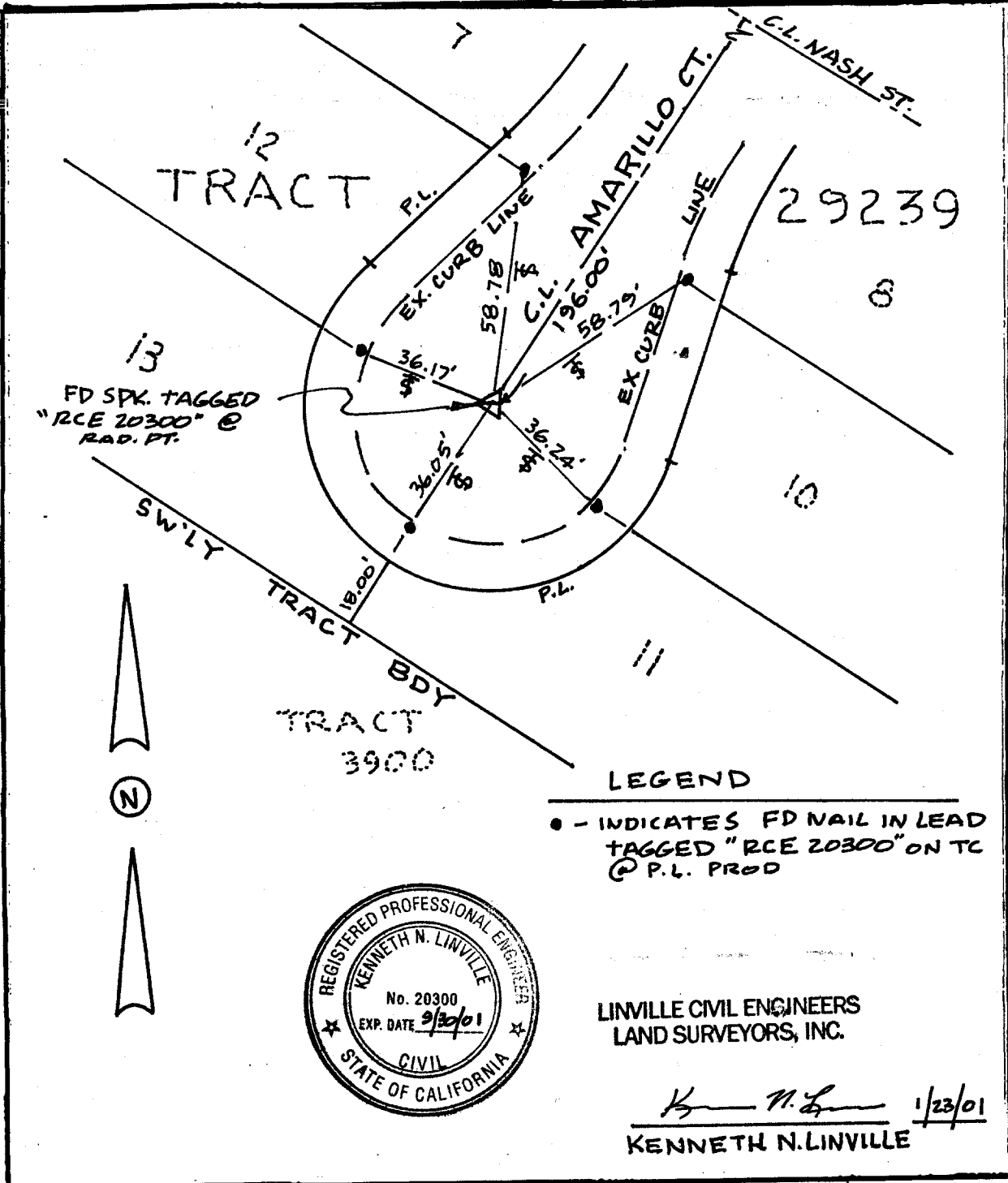


9620 715

Street: AMARILLO CT. X-Street: CUL-DE-SAC.

OFFICIAL USE ONLY



LEGEND

- - INDICATES FD NAIL IN LEAD TAGGED "RCE 20300" ON TC
- ⊙ P.L. PROD



LINVILLE CIVIL ENGINEERS
LAND SURVEYORS, INC.

Kenneth N. Linville 1/23/01
KENNETH N. LINVILLE

Scale: 1"=40'

Date: 1/23/01

Drawn by: KNL

OFFICIAL TIE PLAT
CITY OF RIVERSIDE

These ties are for the purpose of perpetuating the found monumentation. No claim is made as to the relationship of the points or lines shown hereon to true boundary locations.

Sheet 1 of 1
File No.: