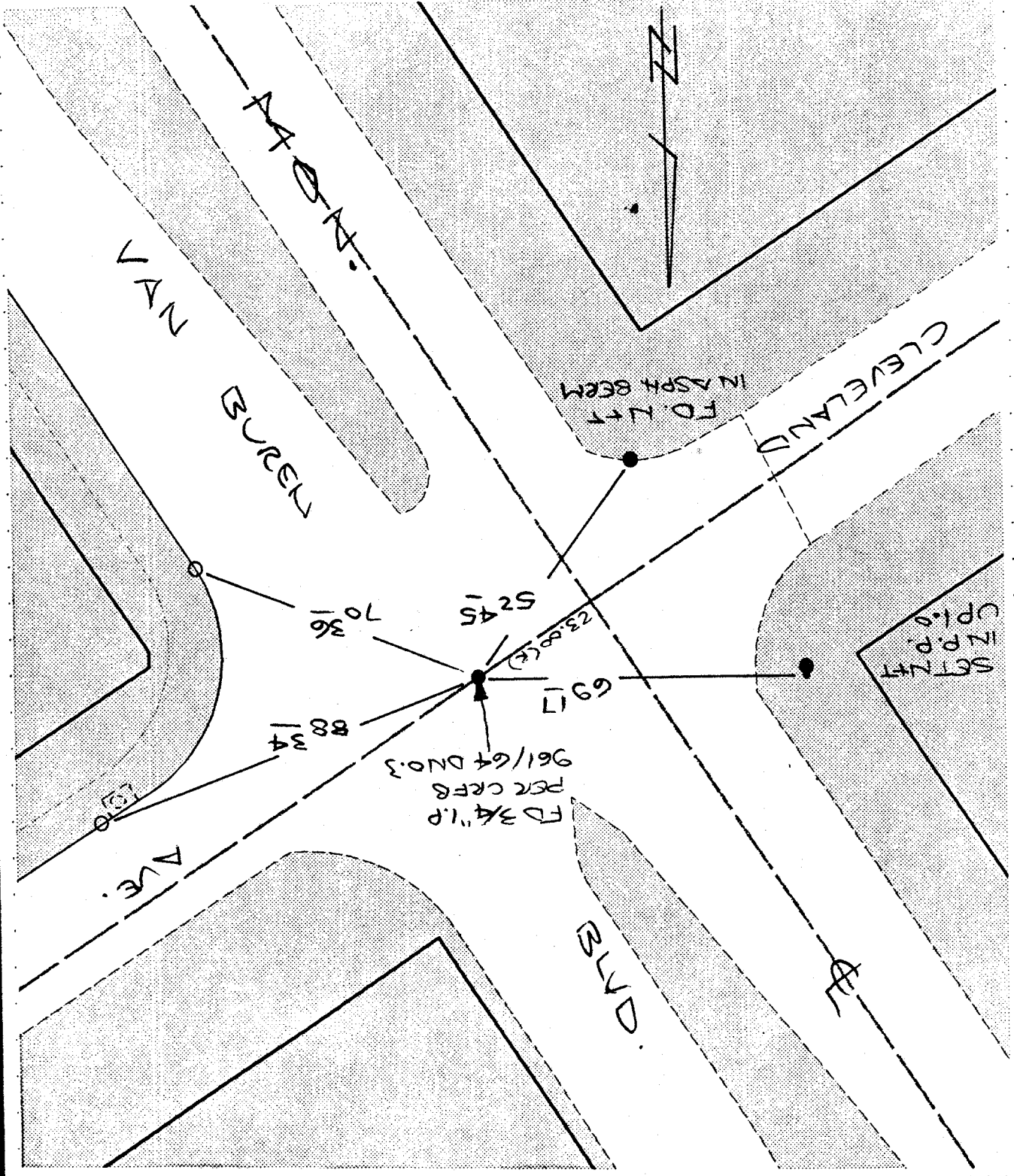


FILE NO.:  
OF 1 SHEETS  
SHEET 1

OFFICIAL TIE PLAT  
CITY OF RIVERSIDE  
These ties are for the purpose of perpetuating the found  
monumentation. No claim is made as to the relationship of  
the points or lines shown hereon to true boundary locations.

SCALE:  
DATE: 10-30-96  
DR. BY: LOPEZ  
W.O.:  
F.B.:

X FD. Ramset Nail on T/C  
FD. "C" Nail on T/C  
● FD. LD. & TK. on T/C  
○ SET LD. & TK. On T/C



STREET VAN BUREN BLVD  
9666 TIE  
OFFICE USE ONLY  
X=STREET CLEVELAND AVE  
30

SWING TIES