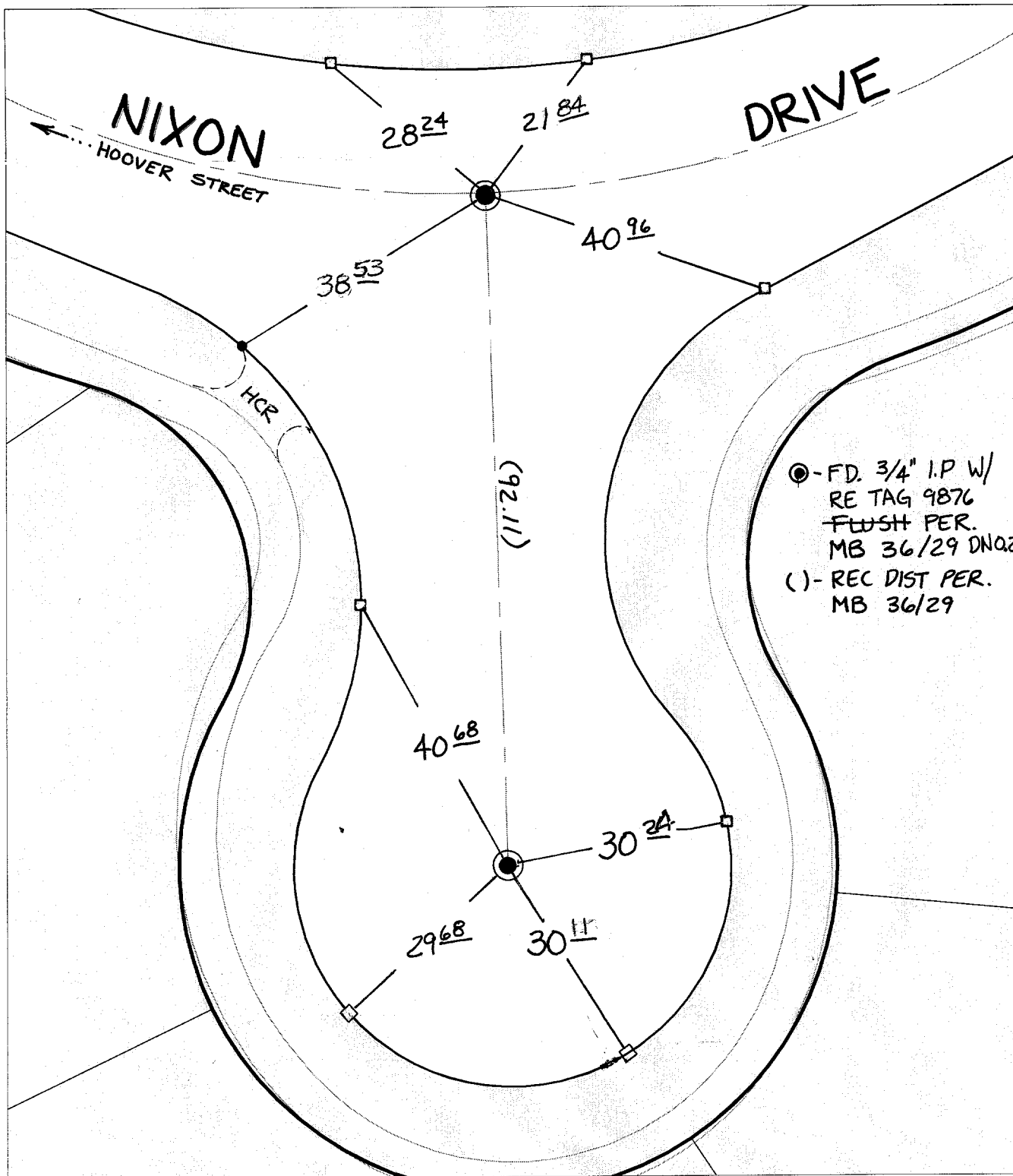


SWING TIES



● - FD. 3/4" I.P. W/
RE TAG 9876
FLUSH PER.
MB 36/29 DNOZ
() - REC DIST PER.
MB 36/29

- ✕ FD. Ramset Nail on T/C ● FD. LD. & TK. on T/C
- FD. "C" Nail on T/C ○ Set LD. & TK. on T/C

P.K. and City Engineer tag to be set @
surface after street construction is
complete. (If possible)

Street: **9726 TIF** NIXON DR
X-Street: W'LY CUL DE SAC
OFFICIAL USE ONLY

Scale: 1" = 20'
Date: 05/09/01
Drawn by: scurtis
F.B.:
TR-Sec: T3SR5W-4

OFFICIAL TIE PLAT CITY OF RIVERSIDE

*These ties are for the purpose of perpetuating the found
monumentation. No claim is made as to the relationship of
the points or lines shown hereon to true boundary locations.*



Sheet 1 of 1
Cadme MB: 53-7