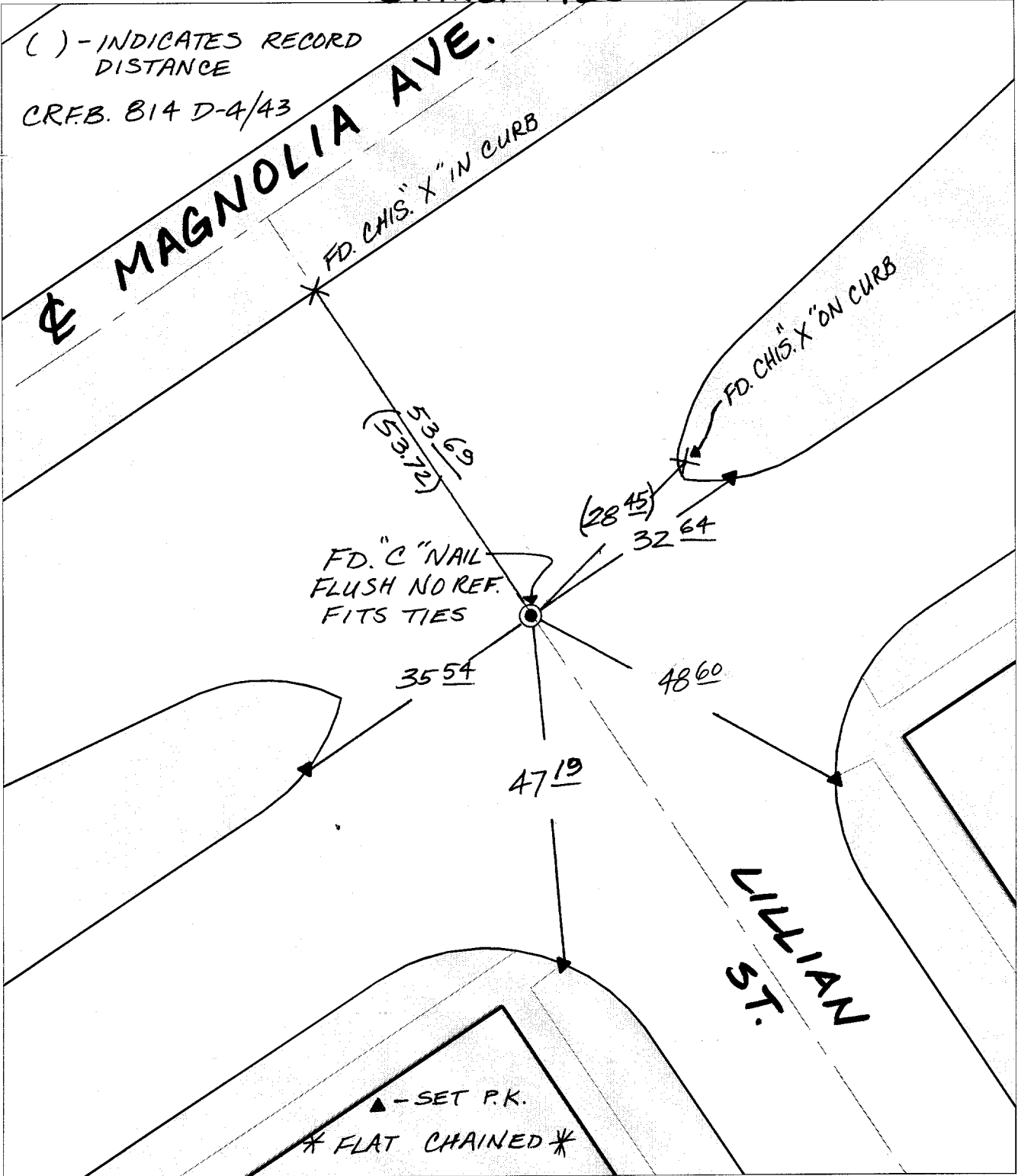


**SWING TIES**



Street: **9748 LILLIAN ST.**  
**716** OFFICIAL USE ONLY  
X-Street: **MAGNOLIA AVE.**

- ✕ FD. Ramset Nail on T/C    ● FD. LD. & TK. on T/C
- FD. "C" Nail on T/C      ○ Set LD. & TK. on T/C

P.K. and City Engineer tag to be set @ surface after street construction is complete. (If possible)

Scale: 1" = 20'  
Date: 05/09/01  
Drawn by: scurtis  
F.B.:  
TR-Sec: T3SR5W-4

**OFFICIAL TIE PLAT**  
**CITY OF RIVERSIDE**

*These ties are for the purpose of perpetuating the found monumentation. No claim is made as to the relationship of the points or lines shown hereon to true boundary locations.*



Sheet 1 of 1  
Cadme MB: 52-8