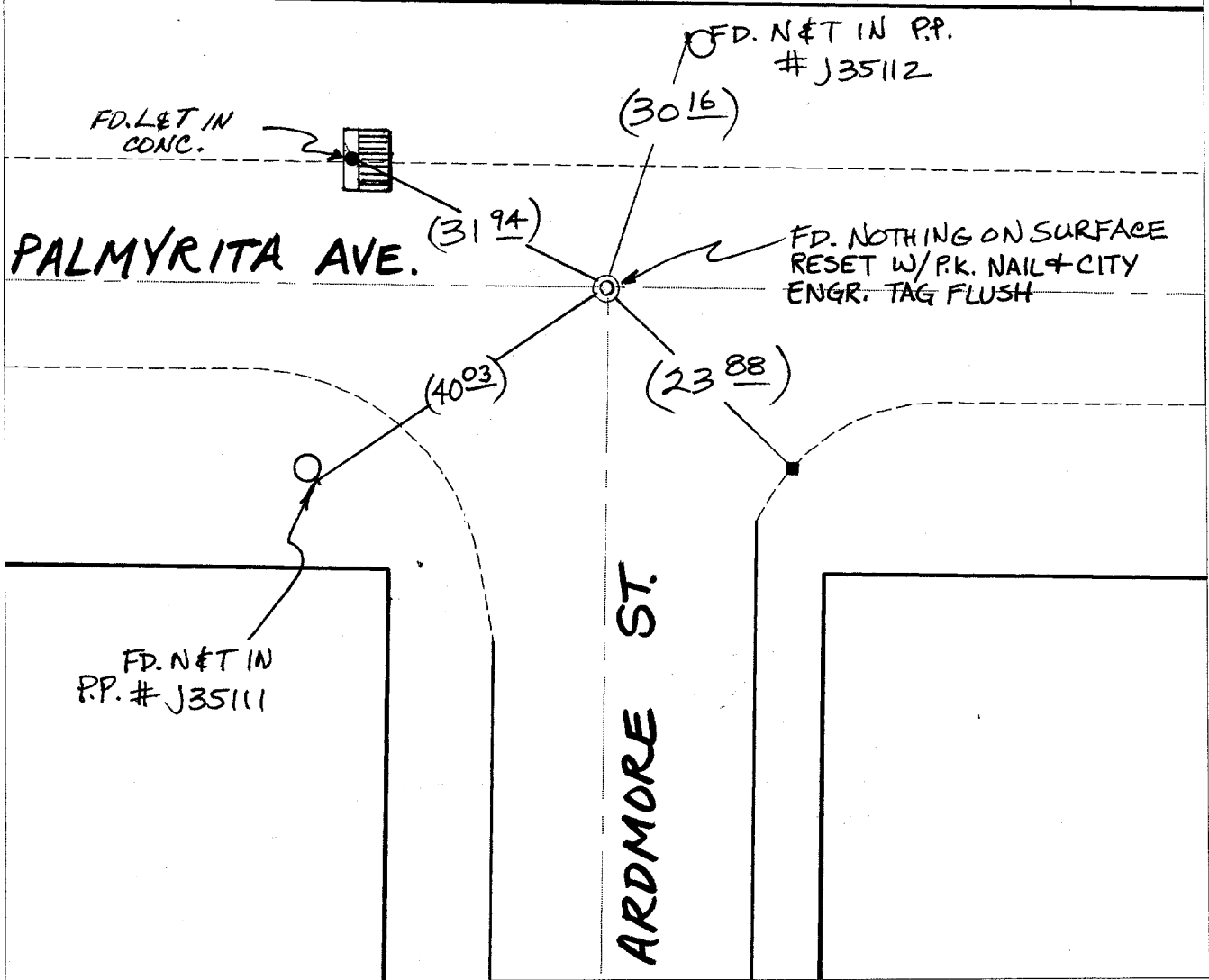


SWING TIES

Street: **C 9765 TIF** PALMYRITA AVENUE
 X-Street: **ARDMORE STREET**
 OFFICIAL USE ONLY

() - INDICATES REC. DIST. PER. LL11/SI-A

HISTORICAL DATA
 Riv. Co. FB. 977/5
 LL11 PG. 51-A




- ✕ FD. Ramset Nail on T/C ● FD. LD. & TK. on T/C P.K. and City Engineer tag to be set @ surface after street construction is complete. (If possible)
- FD. "C" Nail on T/C ○ Set LD. & TK. on T/C

Scale: 1" = 20'
 Date: 01/17/01
 Drawn by: SURVEY
 W.O.:
 F.B.:

OFFICIAL TIE PLAT
 CITY OF RIVERSIDE

These ties are for the purpose of perpetuating the found monumentation. No claim is made as to the relationship of the points or lines shown hereon to true boundary locations.



Sheet 1 of 1
 File No.: