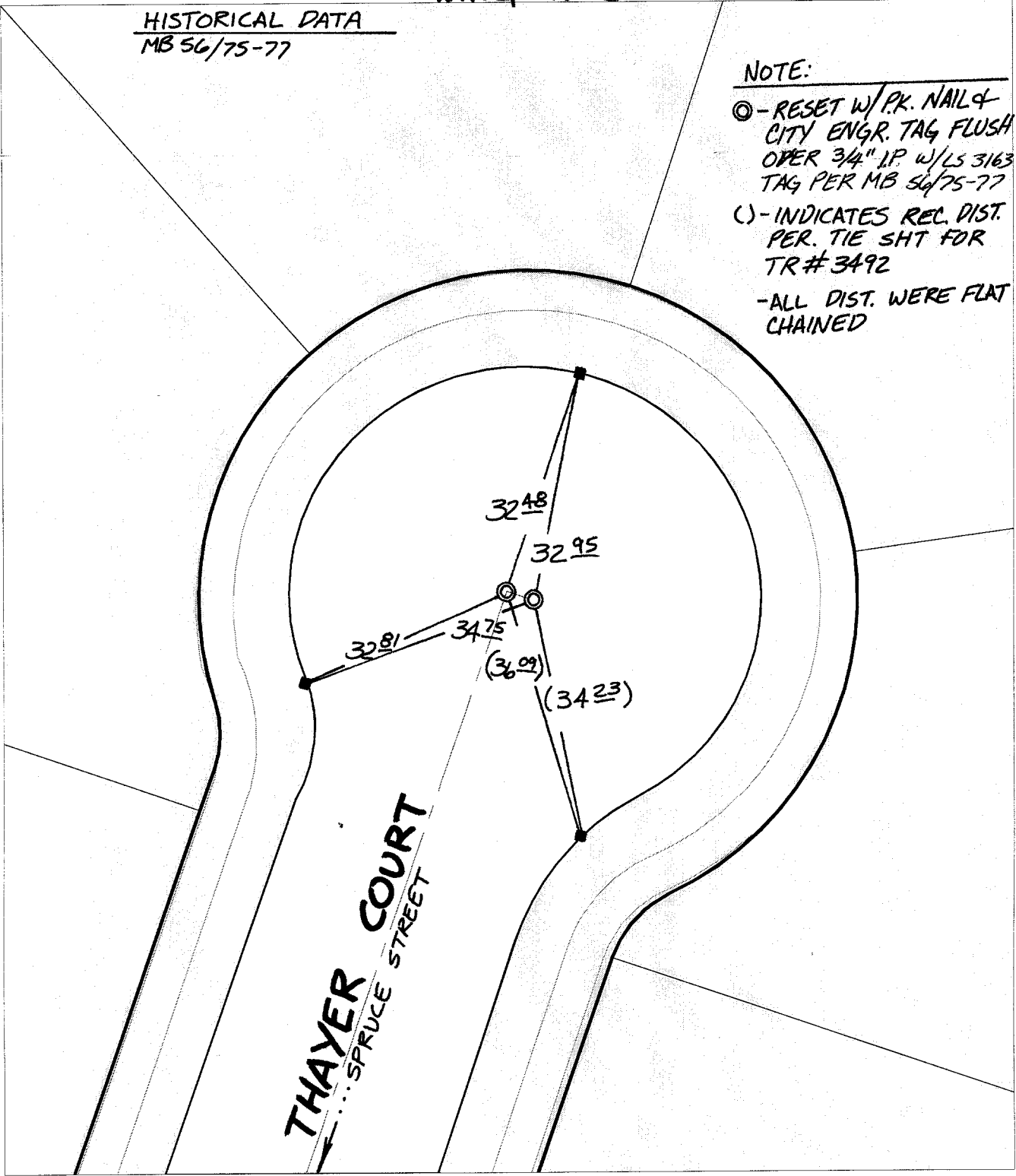


SWING TIES

HISTORICAL DATA
MB 56/75-77

NOTE:

- ⊙ - RESET W/ P.K. NAIL & CITY ENGR. TAG FLUSH OVER 3/4" IP W/LS 3163 TAG PER MB 56/75-77
- () - INDICATES REC. DIST. PER. TIE SHOT FOR TR # 3492
- ALL DIST. WERE FLAT CHAINED



Street: 9819
 THAYER COURT
 X-Street:
 OFFICIAL USE ONLY
 CUL-DE-SAC

- ✕ FD. Ramset Nail on T/C
- FD. LD. & TK. on T/C
- FD. "C" Nail on T/C
- Set LD. & TK. on T/C

P.K. and City Engineer tag to be set @ surface after street construction is complete. (if possible)

Scale: 1" = 20'
 Date: 02/16/01
 Drawn by: SURVEY
 F.B.:
 TR-Sec: T2SR4W-20

OFFICIAL TIE PLAT CITY OF RIVERSIDE

These ties are for the purpose of perpetuating the found monumentation. No claim is made as to the relationship of the points or lines shown hereon to true boundary locations.



Sheet 1 of 1
 Cadme MB: 27-6