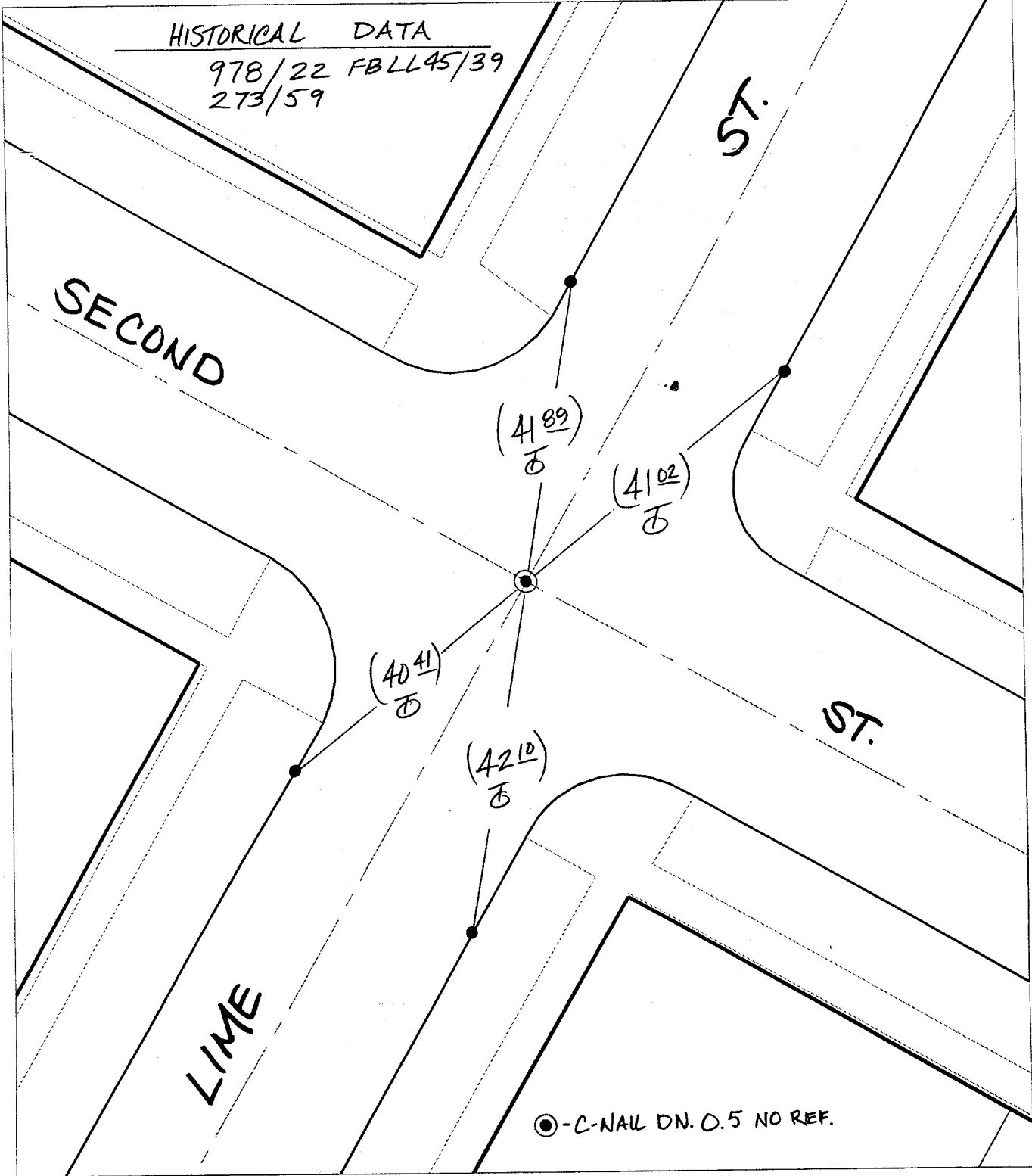


TRANSIT TIES



HISTORICAL DATA
 978/22 FBLL45/39
 273/59

Street: **9831**

SECOND ST.

X-Street:
 OFFICIAL USE ONLY

LIME ST.

⊙ - C-NAIL DN. 0.5 NO REF.

- ✕ FD. Ramset Nail on T/C ● FD. LD. & TK. on T/C
- FD. "C" Nail on T/C ○ Set LD. & TK. on T/C

P.K. and City Engineer tag to be set @ surface after street construction is complete. (If possible)

Scale: 1" = 20'
 Date: 02/08/01
 Drawn by: scurtis
 W.O.:
 F.B.:

OFFICIAL TIE PLAT CITY OF RIVERSIDE



These ties are for the purpose of perpetuating the found monumentation. No claim is made as to the relationship of the points or lines shown hereon to true boundary locations.

Sheet 1 of 1

File No.: