

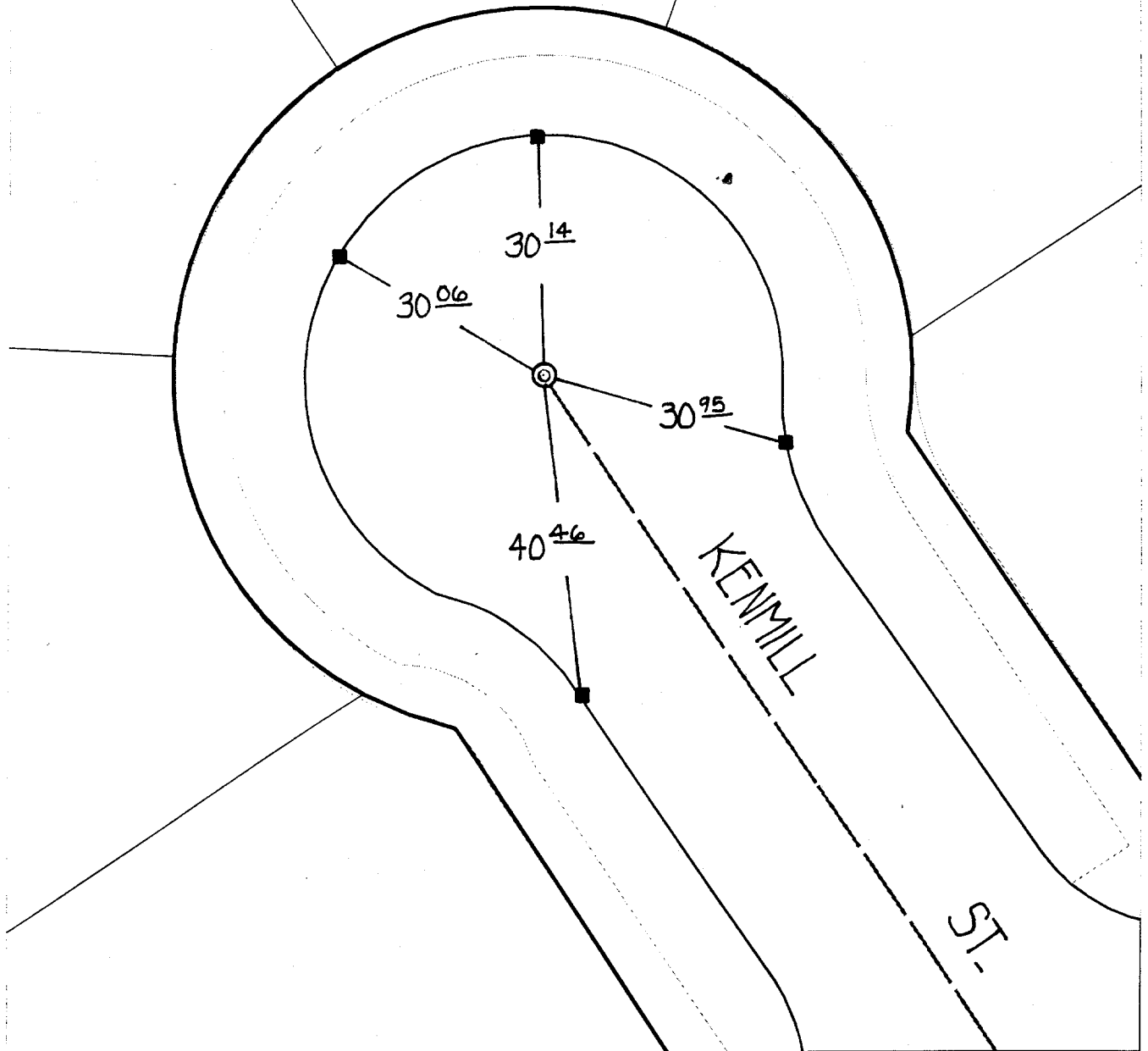
SWING TIES

NOTE:

⊙ FD. 3/4" I.P. W/RE 9876
~~TAG FLUSH RESET PK.~~
 NAIL + CITY TAG

HISTORICAL DATA

MB 34/75-76



⊗ FD. Ramset Nail on T/C
 ■ FD. "C" Nail on T/C

● FD. LD. & TK. on T/C
 ○ Set LD. & TK. on T/C

Street:

KENMILL ST

OFFICIAL USE ONLY

X-Street:

N'LY CUL-DE-SAC

9853 TIE

Scale: 1" = 20'

Date: 11/23/99

Drawn by: scurtis

W.O.:

F.B.:

OFFICIAL TIE PLAT CITY OF RIVERSIDE

These ties are for the purpose of perpetuating the found monumentation. No claim is made as to the relationship of the points or lines shown hereon to true boundary locations.



Sheet 1 of 1

File No.: