

# SWING TIES

9877 TIF.

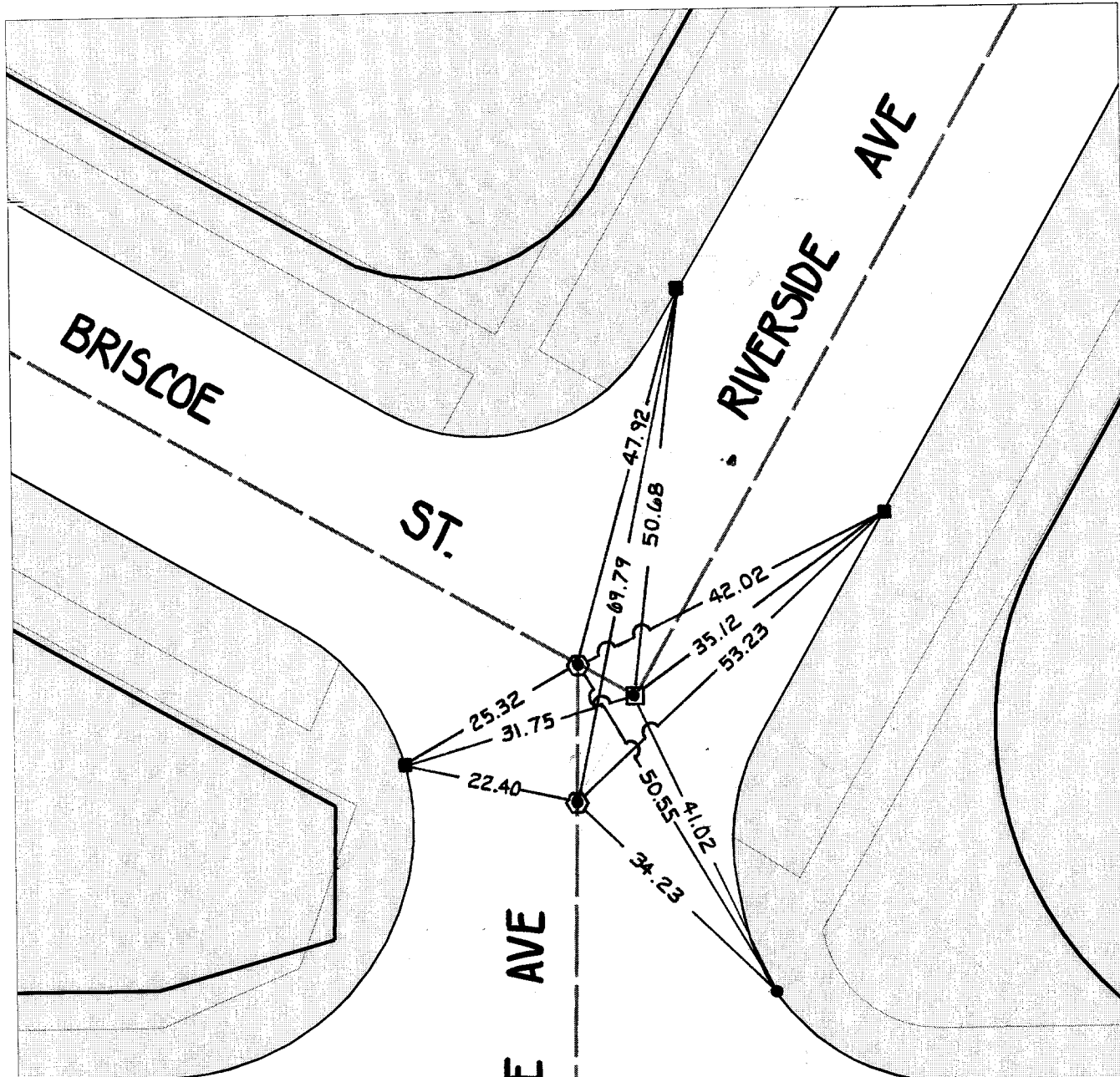
Street:

RIVERSIDE AVE.

OFFICIAL USE ONLY

X-Street:

BRISCOE ST.



**HISTORICAL DATA**

CRFB 819/40

**NOTE:**

- ⊗ FD. NAIL W N+T X-TIES  
FLUSH RESET W/P.K. & CITY ENGR TAG
- ⊠ FD. 1X2" HUB W TAG &  
N+T X-TIES FLUSH RESET  
W/P.K. NAIL & CITY ENGR. TAG

- ⊗ FD. Ramset Nail on T/C
- ⊠ FD. "C" Nail on T/C

- FD. LD. & TK. on T/C
- Set LD. & TK. on T/C

Scale: 1" = 20'

Date: 11/29/99

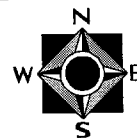
Drawn by: SURVEY

W.O.:

F.B.:

## OFFICIAL TIE PLAT CITY OF RIVERSIDE

*These ties are for the purpose of perpetuating the found monumentation. No claim is made as to the relationship of the points or lines shown hereon to true boundary locations.*



Sheet 1 of 1

File No.: