

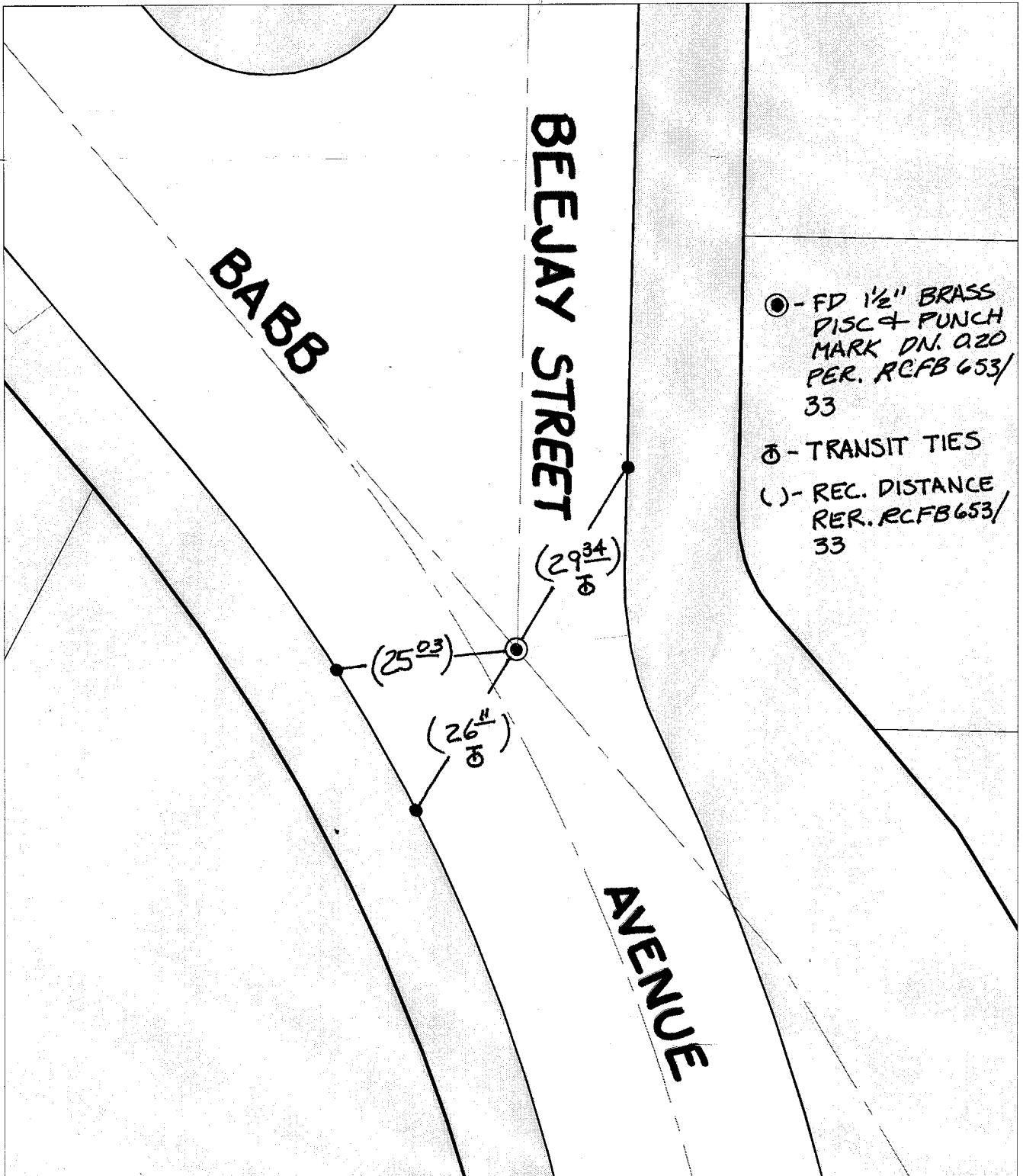
TRANSIT & SWING TIES

Street:
9884 TIF

BEEJAY ST

X-Street:
OFFICIAL USE ONLY

BABB AVE



● - FD 1/2" BRASS DISC & PUNCH MARK DN. 020 PER. RCFB 653/33
 ⦶ - TRANSIT TIES
 () - REC. DISTANCE PER. RCFB 653/33

✕ FD. Ramset Nail on T/C ● FD. LD. & TK. on T/C P.K. and City Engineer tag to be set @ surface after street construction is complete. (If possible)
 ■ FD. "C" Nail on T/C ○ Set LD. & TK. on T/C

Scale: 1" = 20'
 Date: 10/22/01
 Drawn by: survey
 F.B.:
 TR-Sec: T3SR6W-1

OFFICIAL TIE PLAT
CITY OF RIVERSIDE
These ties are for the purpose of perpetuating the found monumentation. No claim is made as to the relationship of the points or lines shown hereon to true boundary locations.

Sheet 1 of 1
 Cadme MB: 49-8