

Scale:  
Date:  
Drawn by:  
W.O.:  
F.B.:

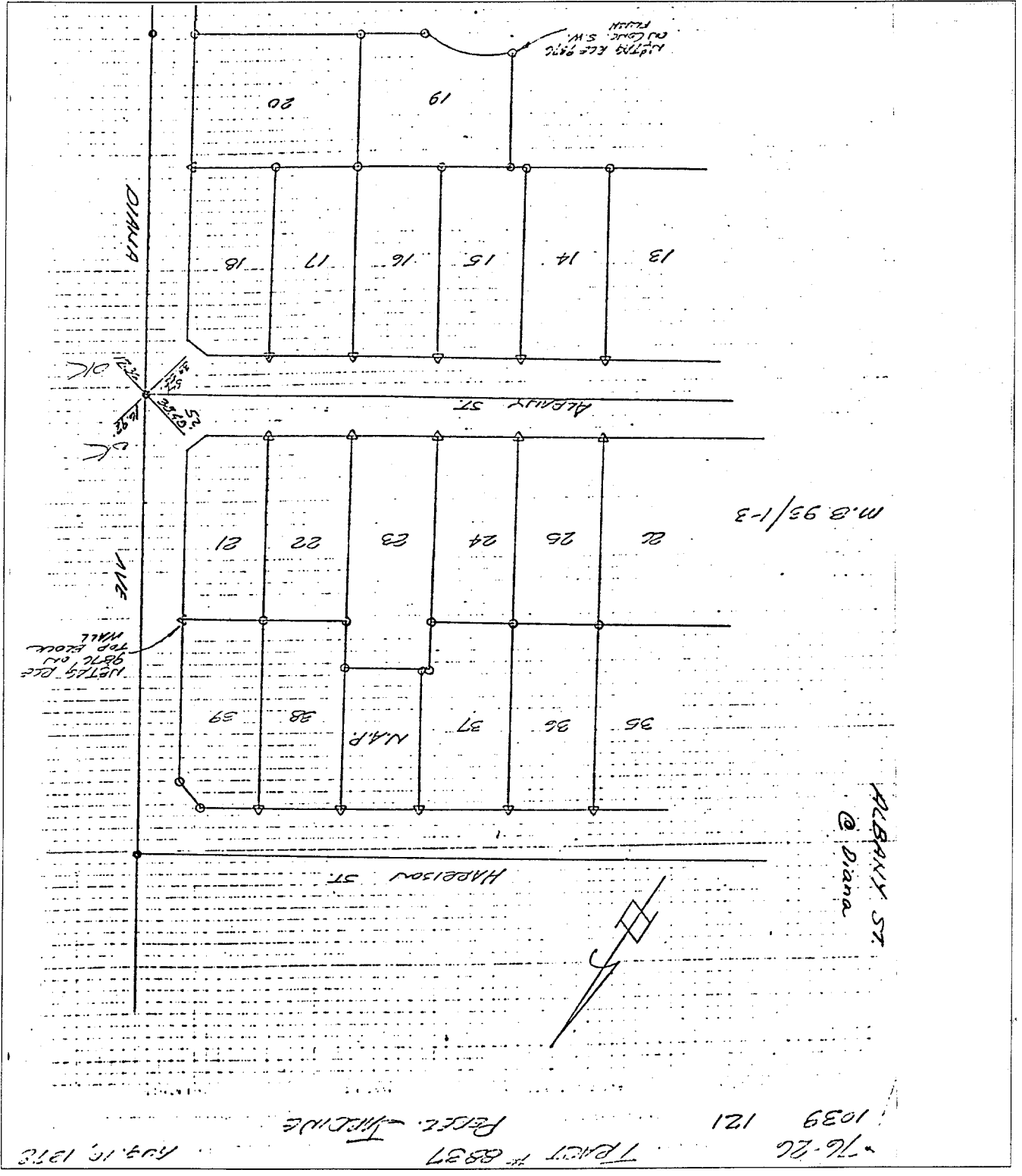
# OFFICIAL TIE PLAT

## CITY OF RIVERSIDE

These ties are for the purpose of perpetuating the found monumentation. No claim is made as to the relationship of the points or lines shown hereon to true boundary locations.

File No.:  
Sheet 1 of 1

× FD. Ramset Nail on T/C  
 ● FD. LD. & TK. on T/C  
 ○ Set LD. & TK. on T/C



Street: **ALBANY ST**      **X-Street: DIANA AVE**      **99.71F**  
 OFFICIAL USE ONLY

TRACT # 8837  
 76-26  
 1039  
 121  
 P.C.T. - RIVERSIDE  
 MAY 10, 1978