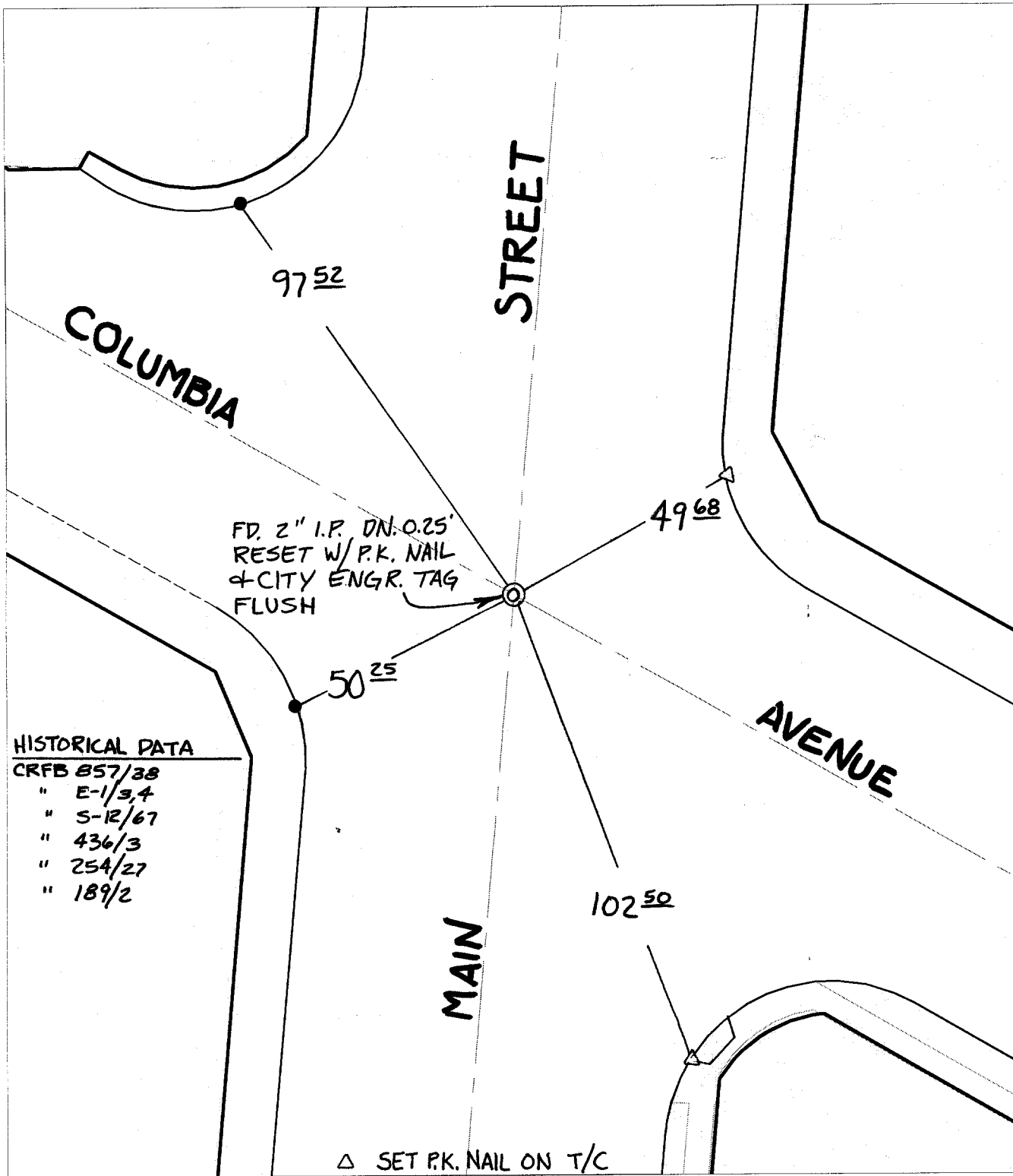


# SWING TIE



**HISTORICAL DATA**

- CRFB 857/38
- " E-1/3,4
- " S-12/67
- " 436/3
- " 254/27
- " 189/2

△ SET P.K. NAIL ON T/C

- ✕ FD. Ramset Nail on T/C
- FD. LD. & TK. on T/C
- FD. "C" Nail on T/C
- Set LD. & TK. on T/C

P.K. and City Engineer tag to be set @ surface after street construction is complete. (If possible)

Street: 9905 TIF COLUMBIA AVENUE  
 X-Street: OFFICIAL USE ONLY  
 MAIN STREET

Scale: 1" = 30'  
 Date: 07/10/01  
 Drawn by: survey  
 F.B.:  
 TR-Sec: -

## OFFICIAL TIE PLAT CITY OF RIVERSIDE

*These ties are for the purpose of perpetuating the found monumentation. No claim is made as to the relationship of the points or lines shown hereon to true boundary locations.*



Sheet 1 of 1  
 Cadme MB: 10-7