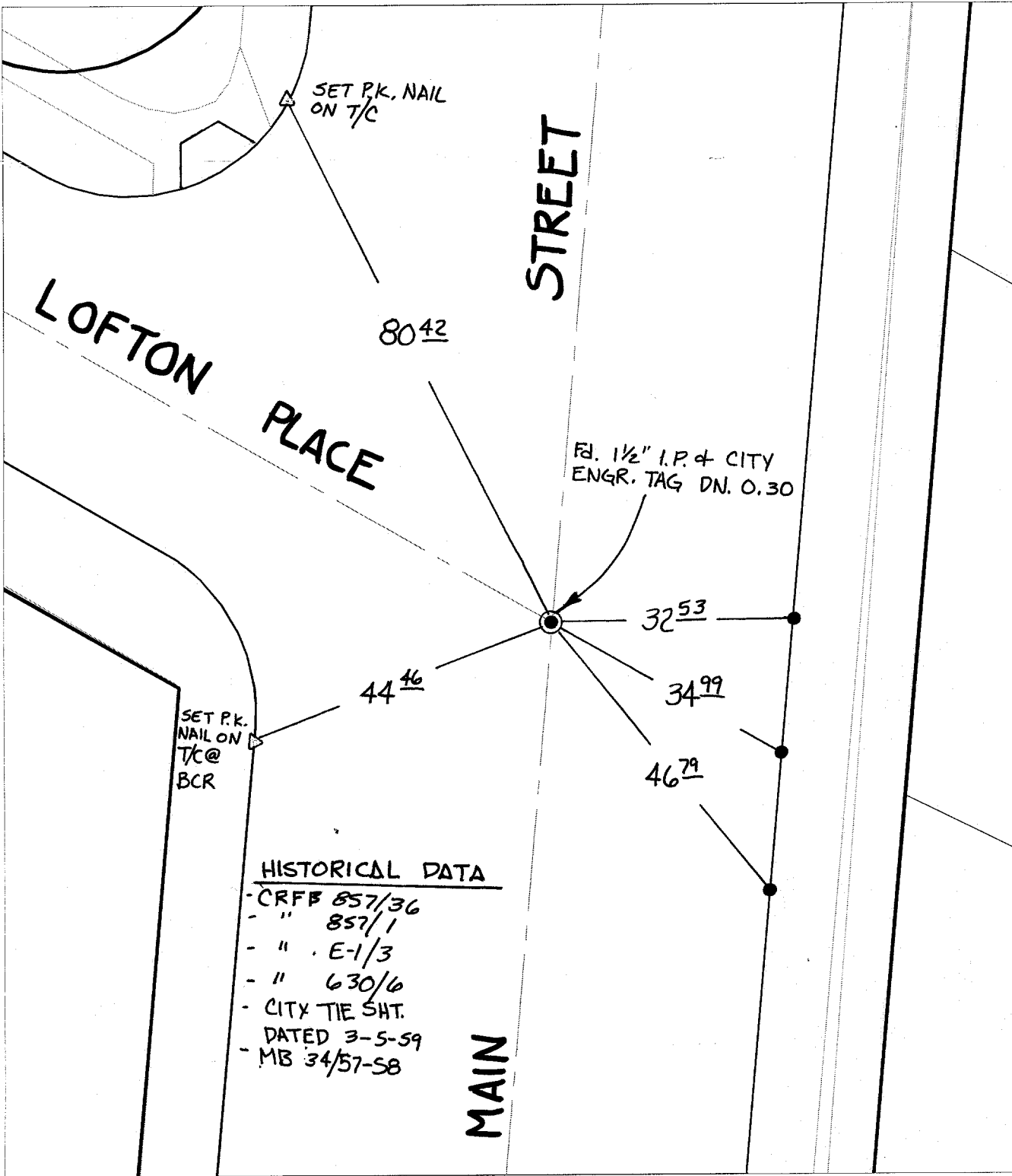


# SWING TIES



**HISTORICAL DATA**

- CRFB 857/36
- " 857/1
- " E-1/3
- " 630/6
- CITY TIE SH.T.
- DATED 3-5-59
- MB 34/57-58

Street: 9910 TIF MAIN STREET X-Street: LOFTON AVENUE  
 OFFICIAL USE ONLY

- ✕ FD. Ramset Nail on T/C
- FD. LD. & TK. on T/C
- FD. "C" Nail on T/C
- Set LD. & TK. on T/C

P.K. and City Engineer tag to be set @ surface after street construction is complete. (If possible)

Scale: 1" = 20'  
 Date: 08/23/01  
 Drawn by: survey  
 F.B.:  
 TR-Sec: -

## OFFICIAL TIE PLAT CITY OF RIVERSIDE

*These ties are for the purpose of perpetuating the found monumentation. No claim is made as to the relationship of the points or lines shown hereon to true boundary locations.*



Sheet 1 of 1  
Cadme MB: 25-1