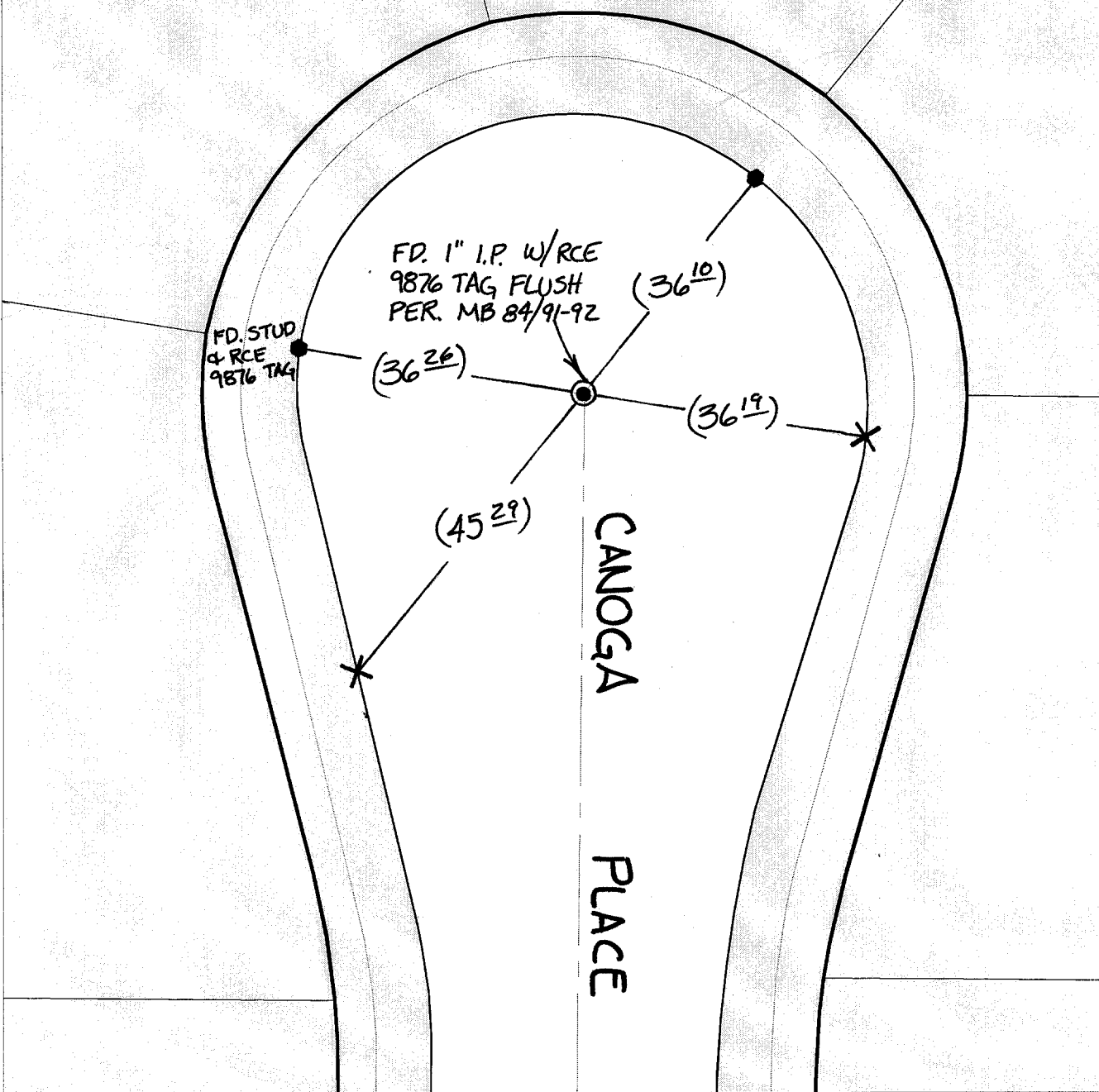


TRANSIT TIES

HISTORICAL DATA

-TRACT 4918 C.L. TIES
F.B. 1031/200
-MB 84/91-92

() - INDICATES REC. DISTANCE
PER. F.B. 1031/200



- X FD. Ramset Nail on T/C ● FD. LD. & TK. on T/C
 ■ FD. "C" Nail on T/C ○ Set LD. & TK. on T/C

P.K. and City Engineer tag to be set @
surface after street construction is
complete. (If possible)

Scale: 1" = 20'

Date: 01/13/77

Drawn by: SURVEY

F.B.:

TR-Sec: T2SR5W-32

OFFICIAL TIE PLAT CITY OF RIVERSIDE

*These ties are for the purpose of perpetuating the found
monumentation. No claim is made as to the relationship of
the points or lines shown hereon to true boundary locations.*



Sheet 1 of 1

Cadme MB: 52-3

Street:
9922

TIF

CANOGA PLACE

X-Street:
OFFICIAL USE ONLY

CUL-DE-SAC