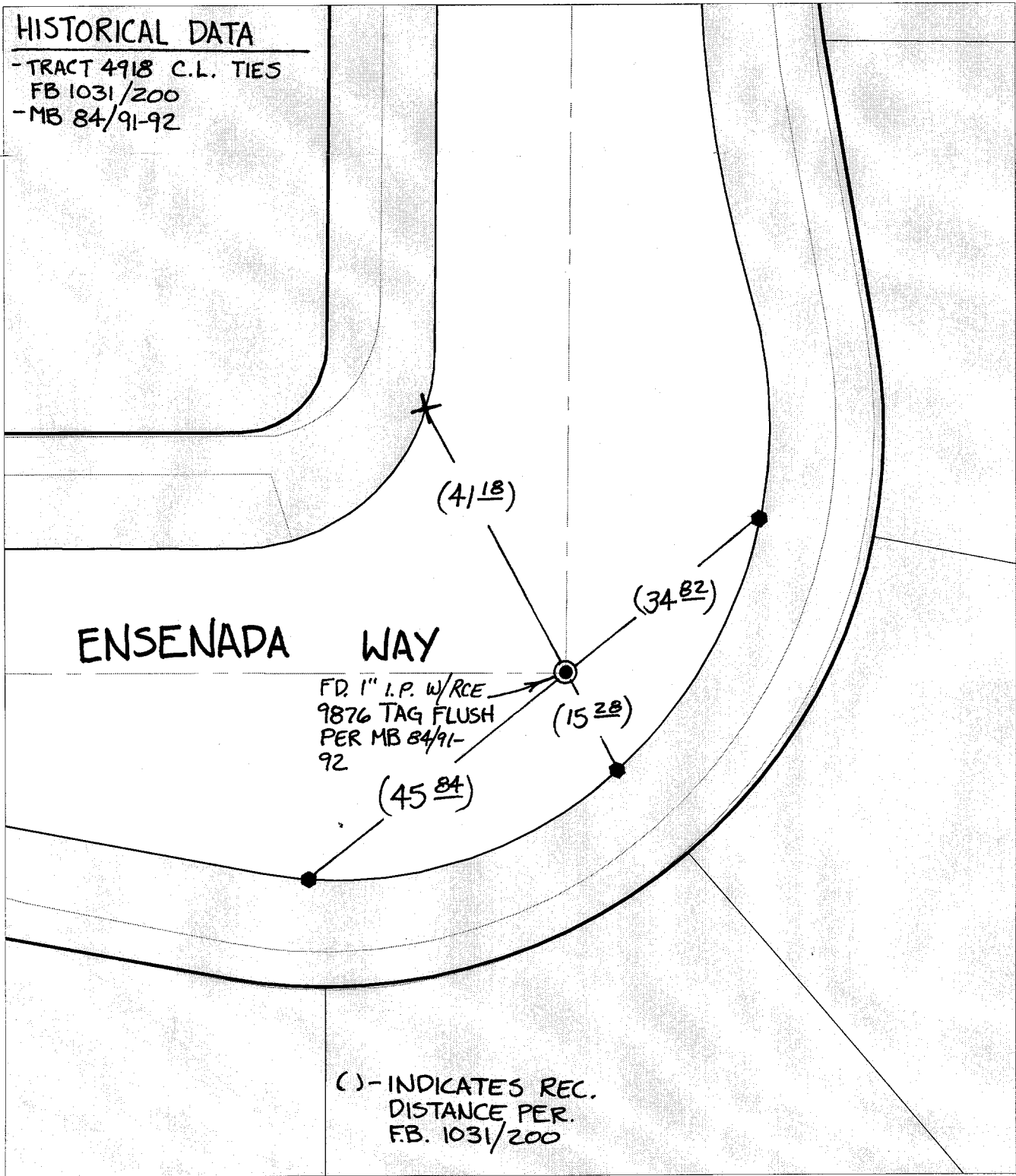


# TRANSIT TIES

## HISTORICAL DATA

- TRACT 4918 C.L. TIES
- FB 1031/200
- MB 84/91-92



( ) - INDICATES REC. DISTANCE PER. FB. 1031/200

- ✕ FD. Ramset Nail on T/C
- FD. "C" Nail on T/C

- FD. LD. & TK. on T/C
- Set LD. & TK. on T/C

P.K. and City Engineer tag to be set @ surface after street construction is complete. (If possible)

Street: 9924

TIF

ENSENADA WAY

X-Street: OFFICIAL USE ONLY

HOLBROOK WAY

Scale: 1" = 20'

Date: 01/13/77

Drawn by: SURVEY

F.B.:

TR-Sec: T2SR5W-32

## OFFICIAL TIE PLAT CITY OF RIVERSIDE

*These ties are for the purpose of perpetuating the found monumentation. No claim is made as to the relationship of the points or lines shown hereon to true boundary locations.*



Sheet 1 of 1

Cadme MB: 52-3