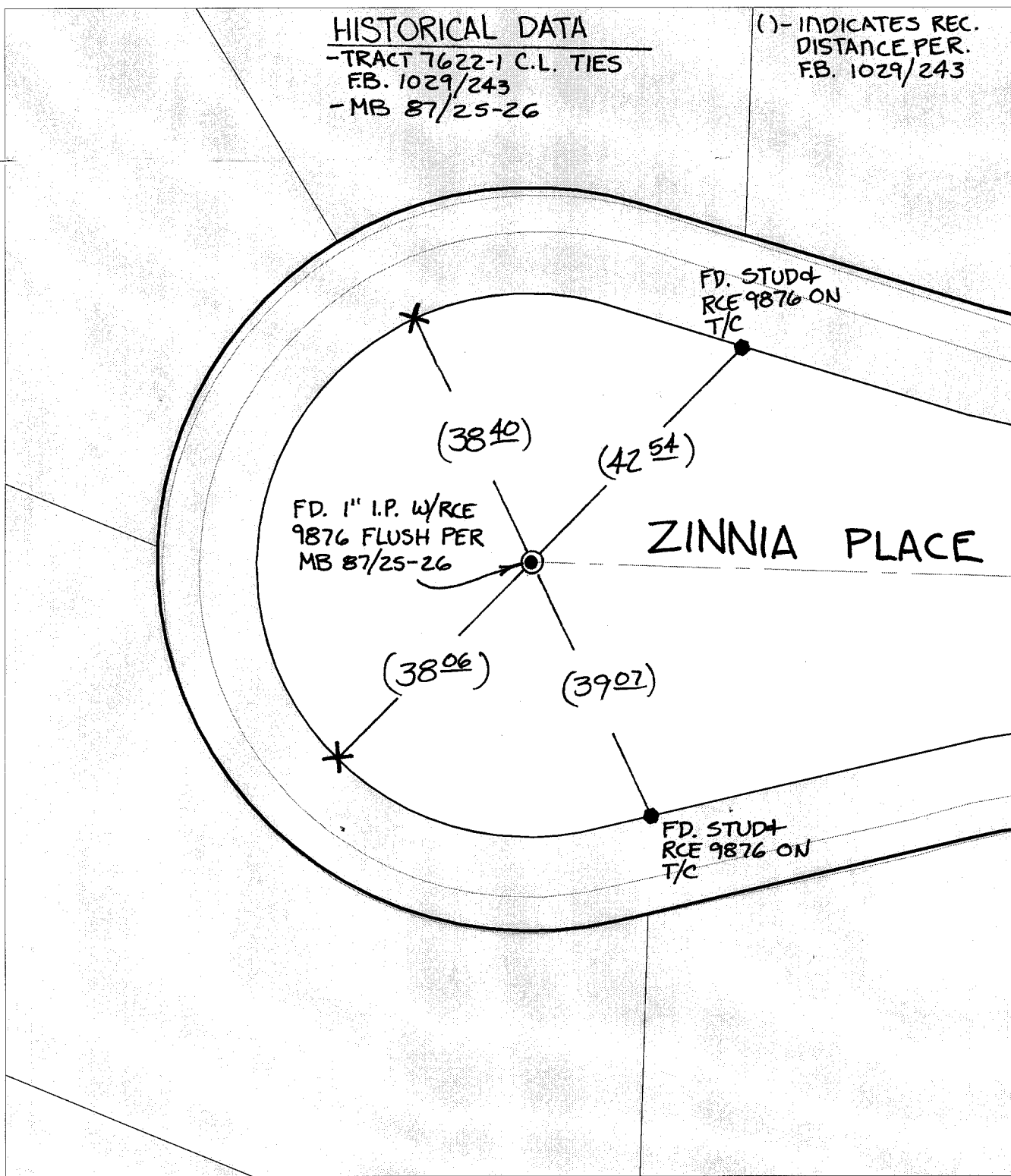


TRANSIT TIES

HISTORICAL DATA

-TRACT 7622-1 C.L. TIES
 F.B. 1029/243
 -MB 87/25-26

() - INDICATES REC.
 DISTANCE PER.
 F.B. 1029/243



Street:
9926

TIF

ZINNIA PLACE

OFFICIAL USE ONLY

X-Street:

CUL-DE-SAC

- ✕ FD. Ramset Nail on T/C ● FD. LD. & TK. on T/C
- FD. "C" Nail on T/C ○ Set LD. & TK. on T/C

P.K. and City Engineer tag to be set @ surface after street construction is complete. (If possible)

Scale: 1" = 20'

Date: 04/06/77

Drawn by: SURVEY

F.B.:

TR-Sec: T2SR6W-36

OFFICIAL TIE PLAT

CITY OF RIVERSIDE

These ties are for the purpose of perpetuating the found monumentation. No claim is made as to the relationship of the points or lines shown hereon to true boundary locations.



Sheet 1 of 1

Cadme MB: 50-3