

SWING TIES

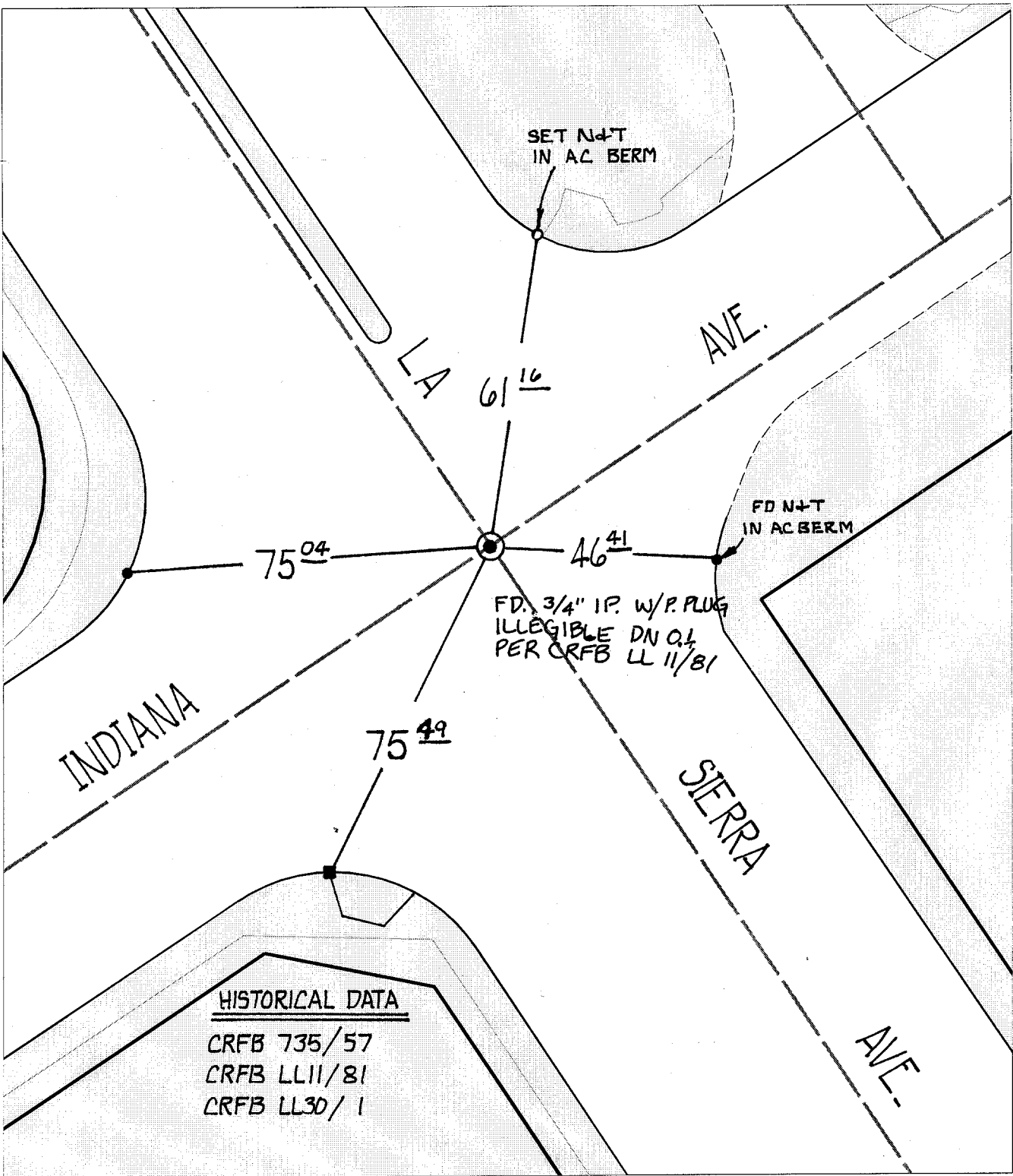
Street:
9931

TIF

LA SIERRA AVE.

X-Street:
OFFICIAL USE ONLY

INDIANA AVE.



- ✕ FD. Ramset Nail on T/C
- FD. LD. & TK. on T/C
- FD. "C" Nail on T/C
- Set LD. & TK. on T/C

Scale: 1" = 30'
 Date: 08/05/99
 Drawn by: L. Harris
 W.O.:
 F.B.:

OFFICIAL TIE PLAT CITY OF RIVERSIDE

These ties are for the purpose of perpetuating the found monumentation. No claim is made as to the relationship of the points or lines shown hereon to true boundary locations.



Sheet 1 of 1
 File No.: